

Figure 1.

Phase 1

Residents aged 18 and above in Bizen City, Okayama Prefecture, who participated in the Bizen COVID-19 Antibody Testing Project : 8013 data points from 1972 participants

Phase 2 (Current study)

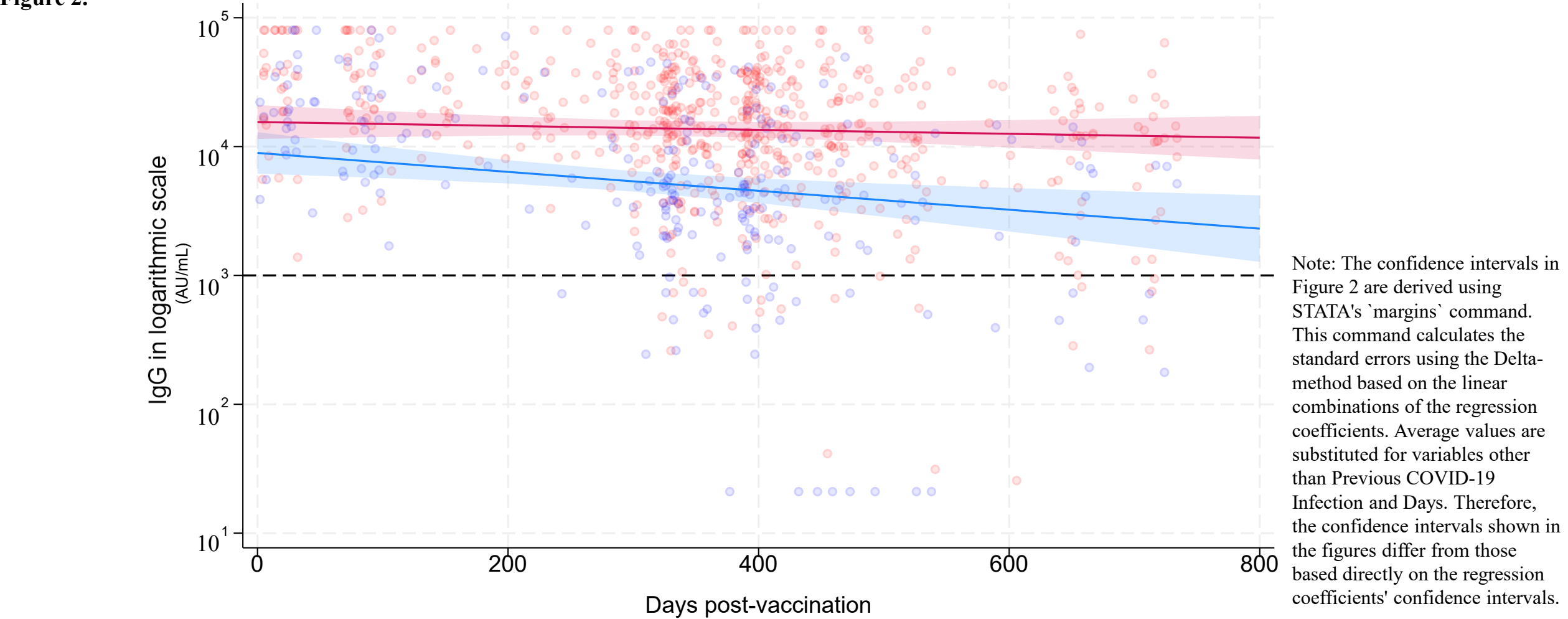
Recruitment from Phase 1 participants and participating facilities (October 2023)

Phase 1 participants and participants who were recruited from participating facilities and agreed to an additional survey: 860 data points from 445 participants

Excluded datapoints: 39 datapoints
Data for not receiving the 3rd to 7th dose: 12 datapoints
Data on uncertain whether the target vaccine (Pfizer or Moderna) : 27 datapoints

Participants included in the analyses: 821 datapoints from 424 participants
(Third dose: 118 datapoints, Fourth dose: 235 datapoints, Fifth dose: 339 datapoints, Sixth and more: 129 datapoints)

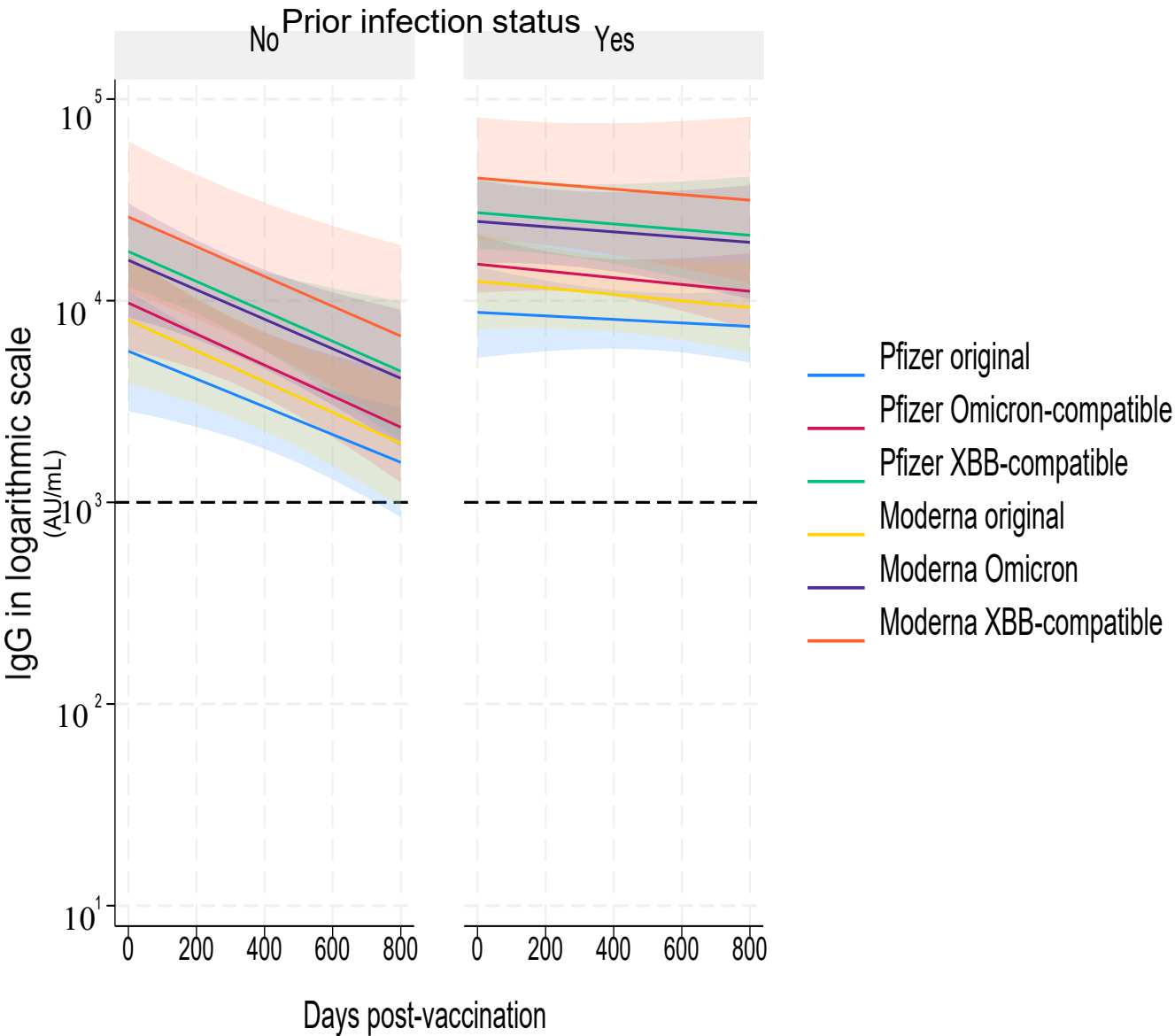
Figure 2.



Days after recent vaccination		0-200days	200-400days	400-600days	600-800days
Prior infection					
Yes	geometric mean titer (AU/mL)	26839.93	14830.31	11243.76	6747.43
	95%CI	22222.65-32416.55	13037.22-16870.01	9252.75-1366333.19	4522.90-10066.07
No	geometric mean titer (AU/mL)	16813.73	4441.98	2124.45	2650.56
	95%CI	13385.13-21120.58	3443.93-5729.26	1181.54-3819.85	1258.02-5584.55

Figure 3.

A. Subgroup analysis by vaccination type



B. Subgroup analysis by age group

