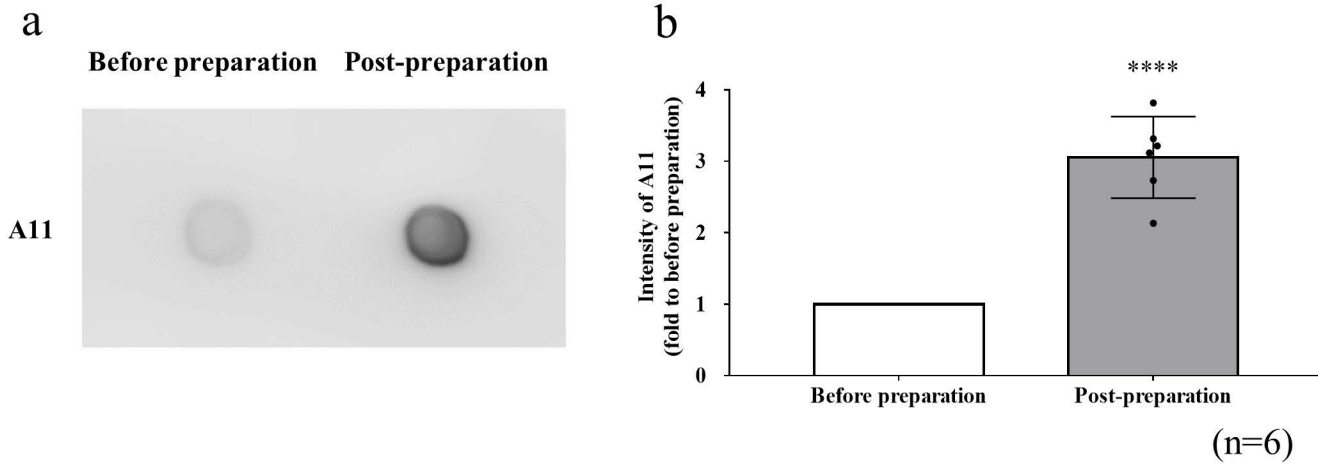


Figure 1

**** $p < 0.0001$ vs Before preparation



c

WT + vehicle n= 12	-2M △ 8 arm maze	injection ↑ PBS	+1M △ 8 arm maze	+2M + n= 6
WT + Aβ-oligomer n= 12	△ 8 arm maze	↑ AβO	△ 8 arm maze	+ n= 6
APP23 + vehicle n= 12	△ 8 arm maze	↑ PBS	△ 8 arm maze	+ n= 6
APP23 + Aβ-oligomer n= 12	△ 8 arm maze	↑ AβO	△ 8 arm maze	+ n= 6
WT + vehicle n= 12	-2M △ 8 arm maze	injection ↑ PBS	+6M △ 8 arm maze	+7M + n= 6
WT + Aβ-oligomer n= 12	△ 8 arm maze	↑ AβO	△ 8 arm maze	+ n= 6
APP23 + vehicle n= 12	△ 8 arm maze	↑ PBS	△ 8 arm maze	+ n= 6
APP23 + Aβ-oligomer n= 12	△ 8 arm maze	↑ AβO	△ 8 arm maze	+ n= 6

Figure 2

Behavior test (8-arm maze)

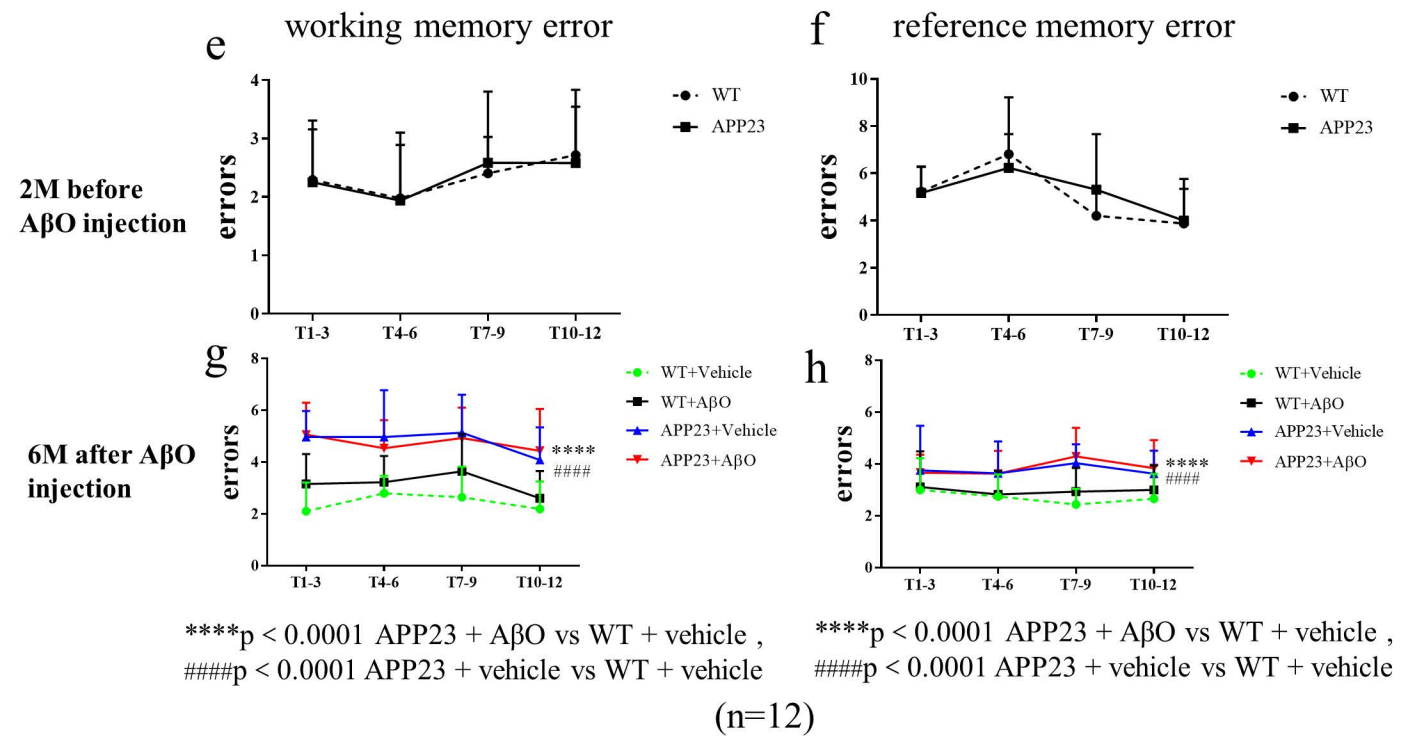
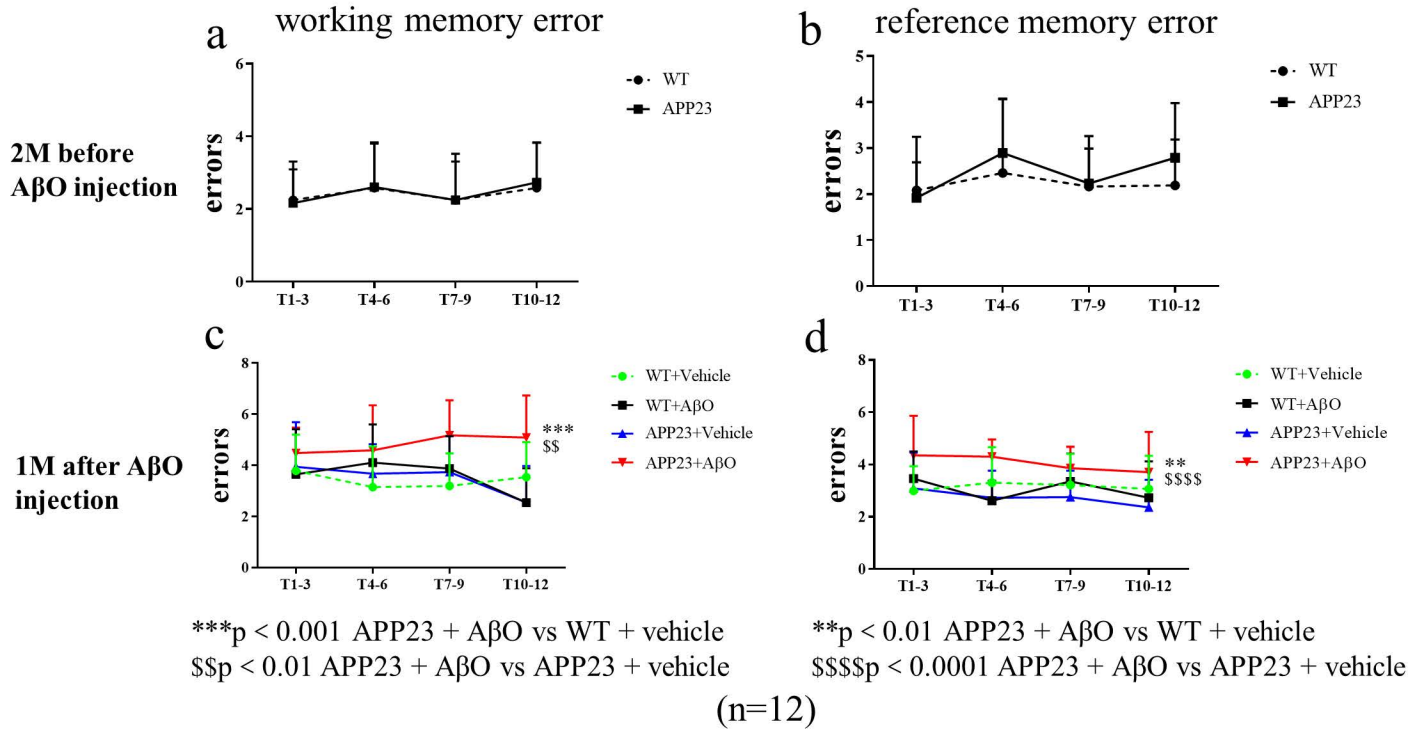


Figure 3

A11 A β -oligomer antibody

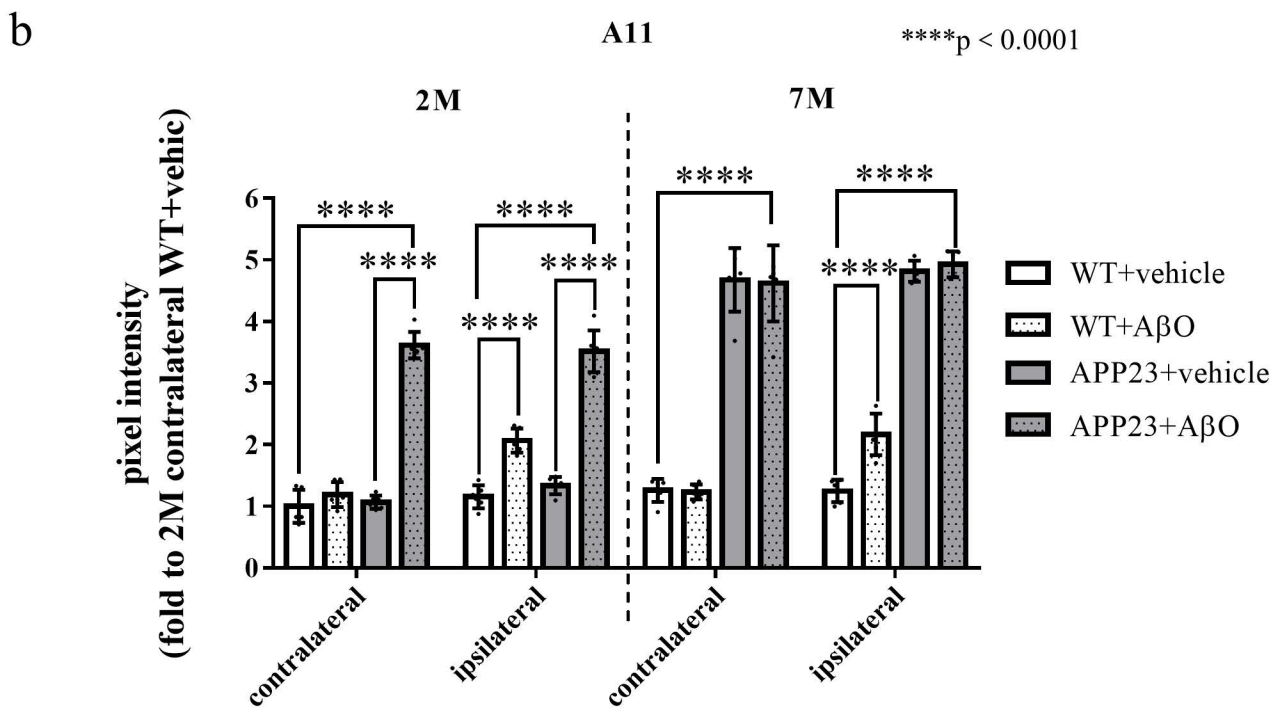
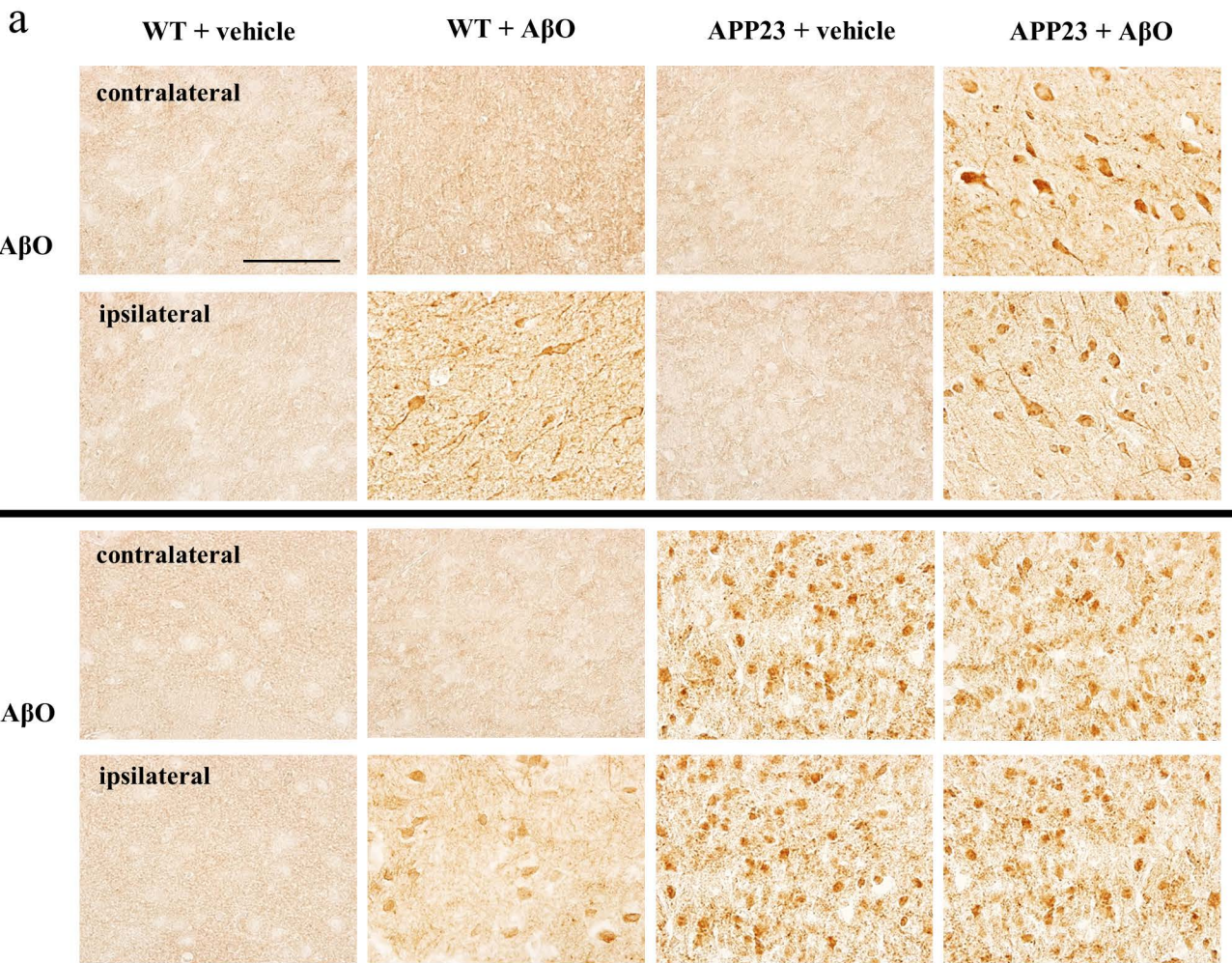
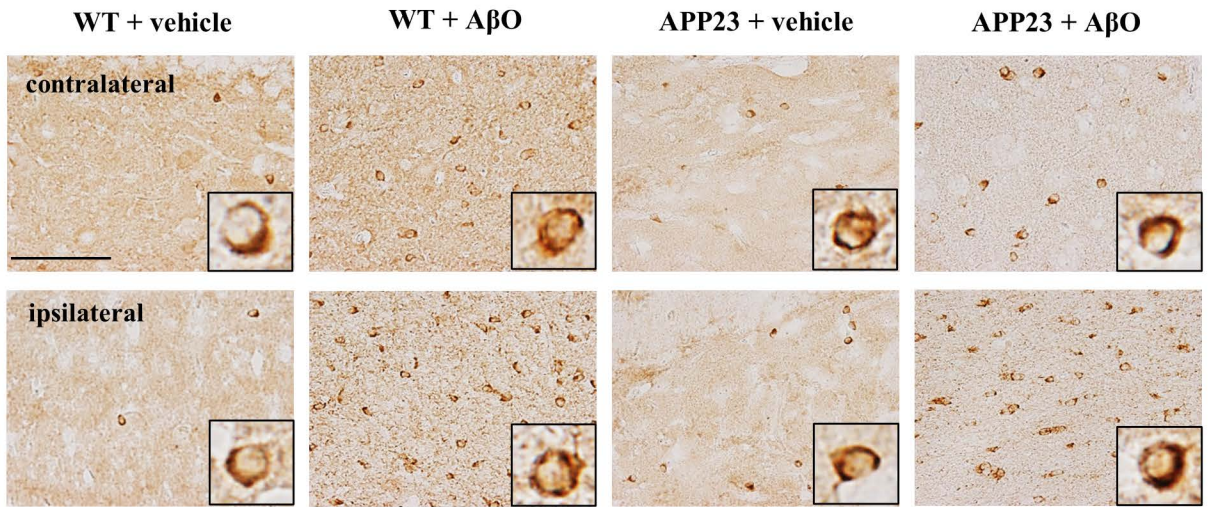


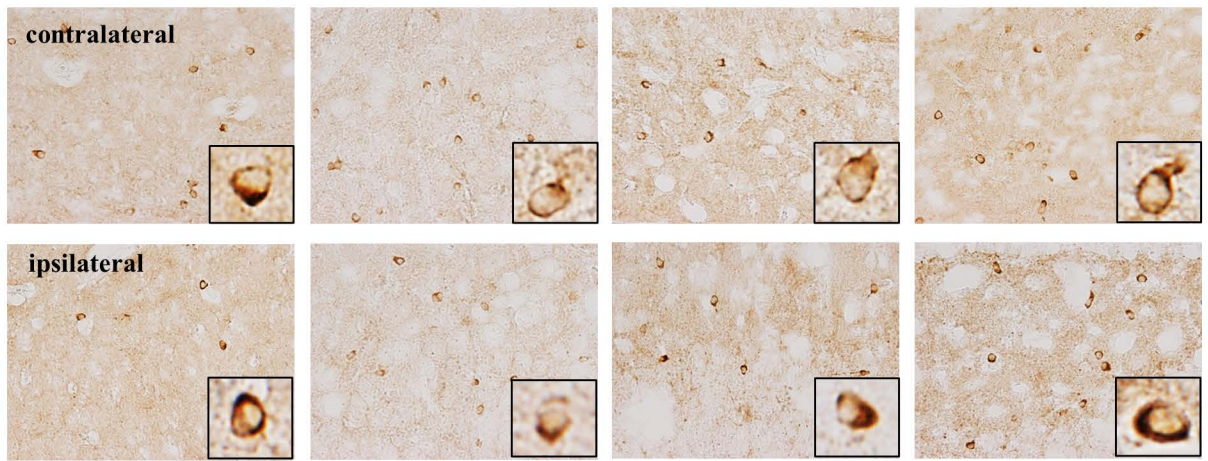
Figure 4

Phospho-tau (Ser404) antibody

a



2M after AβO injection



7M after AβO injection

b

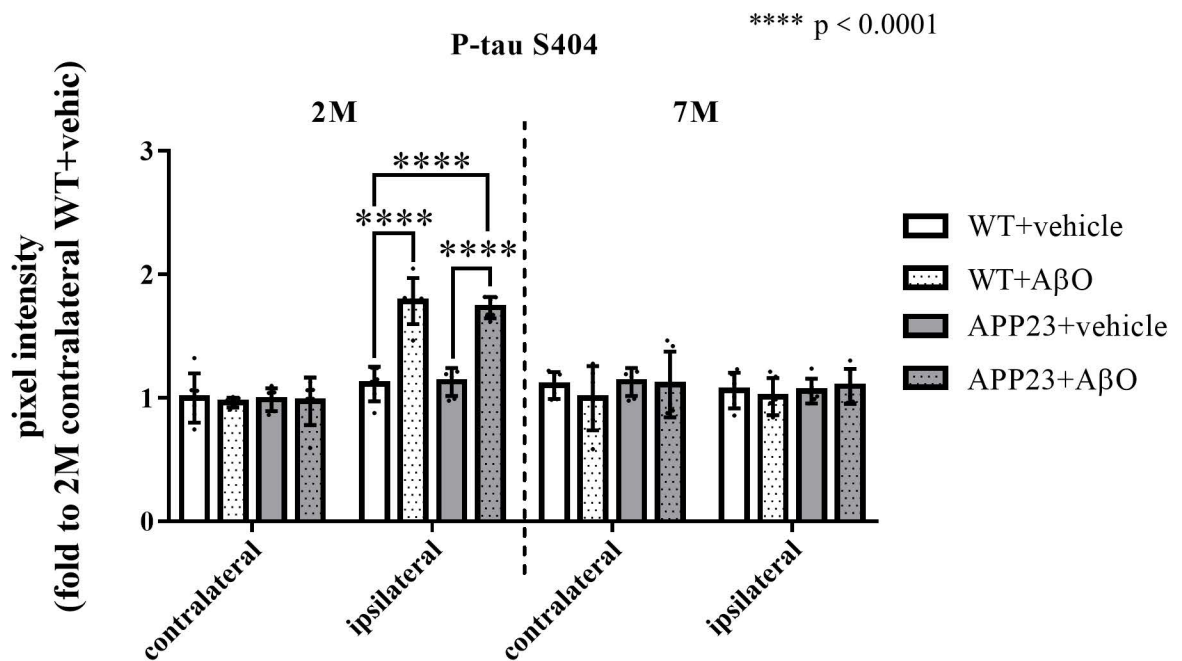


Figure 5

MLKL antibody

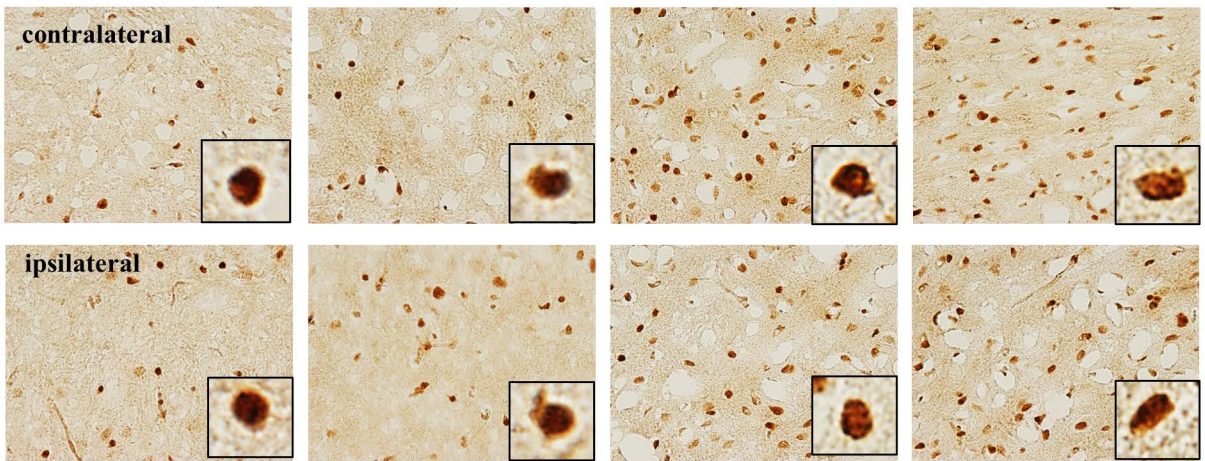
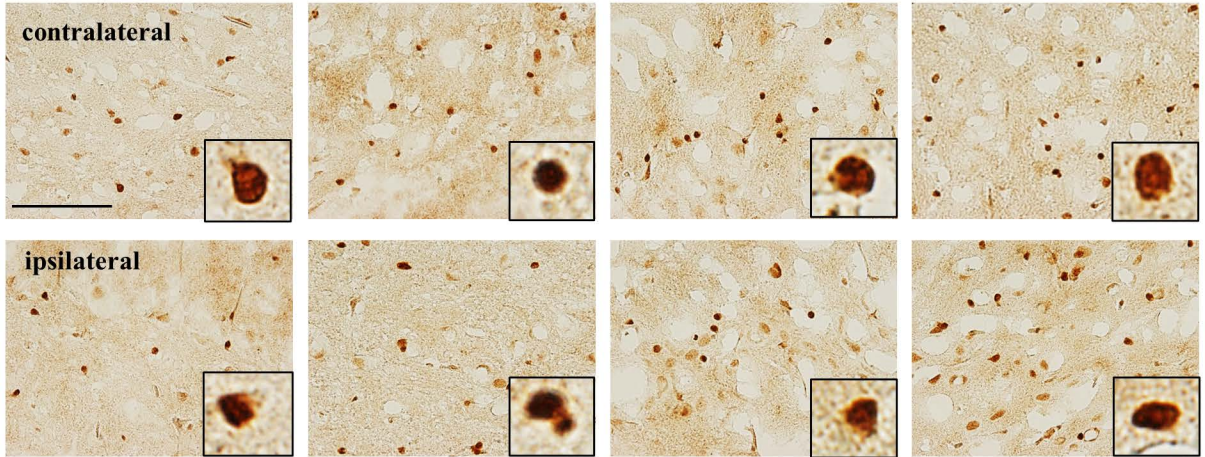
a

WT + vehicle

WT + A β O

APP23 + vehicle

APP23 + A β O



b

MLKL

*p < 0.05, *** p < 0.001, **** p < 0.0001

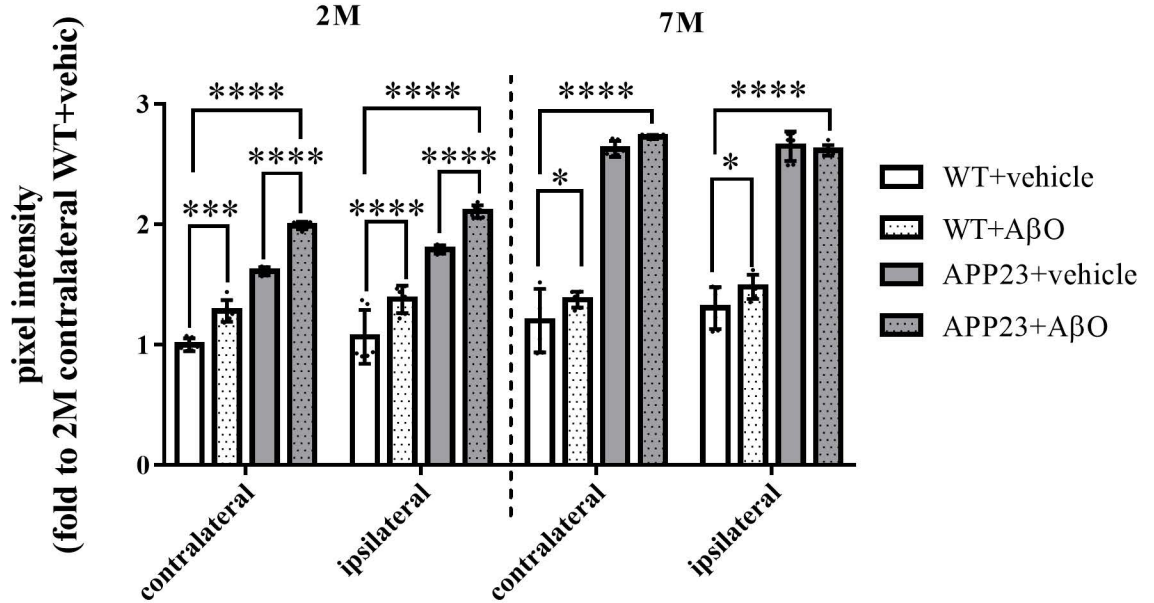


Figure 6

