

表1. 本研究で使用したプラスミド

名称	特徴	由来
pMW119	<i>E. coli</i> クローニングベクター, Amp ^r	ニッポンジーン
pGEX6P-1	<i>E. coli</i> に対するタンパク発現用ベクター, Amp ^r	GE Healthcare
pSK6	pMW119 に <i>gtfB</i> を挿入した組み換えプラスミド	Fujiwara ら (1992)
pGEX6P-1 (CAT)	pGEX6P-1 に <i>gtfB</i> (CAT) を挿入した組み換えプラスミド, Amp ^r	本研究

Amp^r ; アンピシリン耐性

表2. 本研究で使用したプライマー

名称	塩基配列 (5'→3')	用途	由来
GTFB (CAT) - F	<u>CTGTTCCAGGGGCCCAT</u> GGACAAGAAAGTGCGTTATAAAC	GTF(CAT) 断片の増幅	本研究
GTFB (CAT) - R	<u>GCAGATCGTCAGTCACTCCT</u> CTAAGAAAGCTCCCCATAAC	GTF(CAT) 断片の増幅	本研究
pGEX-6P-1 (CAT) - F	GCTTTCTTAGAGGAGTGA <u>CTGACGATCTGCCTCGCGCGTT</u>	pGEX-6P-1(CAT) の増幅	本研究
pGEX-6P-1 (CAT) - R	CACTTTCTTGTCCATGGGCCCCTGGAACAGAACTTCCAGA	pGEX-6P-1(CAT) の増幅	本研究
pGEX-6P-1 (check) - F	ATGGACCCAATGTGCCTGGATGCGT	GTFB (CAT) 挿入の確認	本研究
pGEX-6P-1 (check) - R	CCGGGAGCTGCATGTGTCAGAGGTT	GTFB (CAT) 挿入の確認	本研究

下線は付与した pGEX-6P-1 の配列

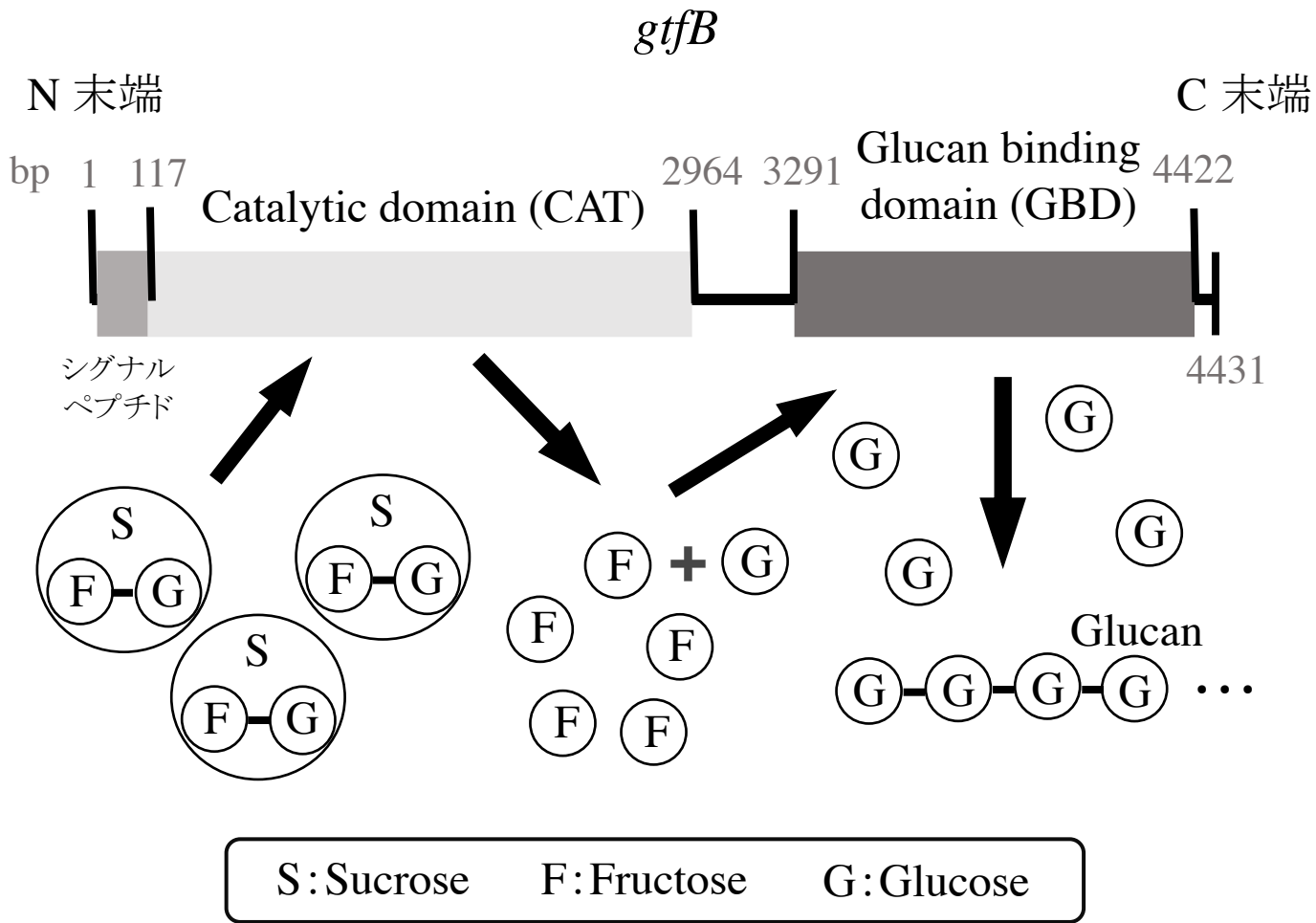


図1.

浅海春華

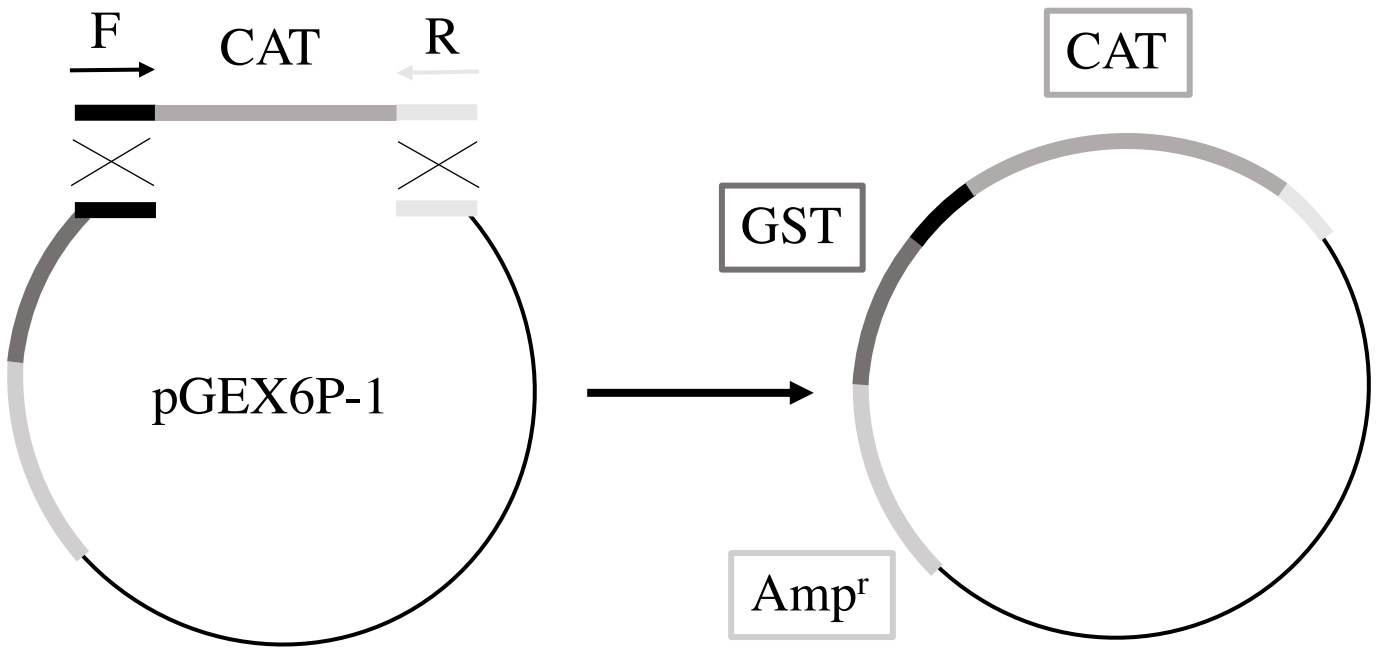


图2.

浅海春華

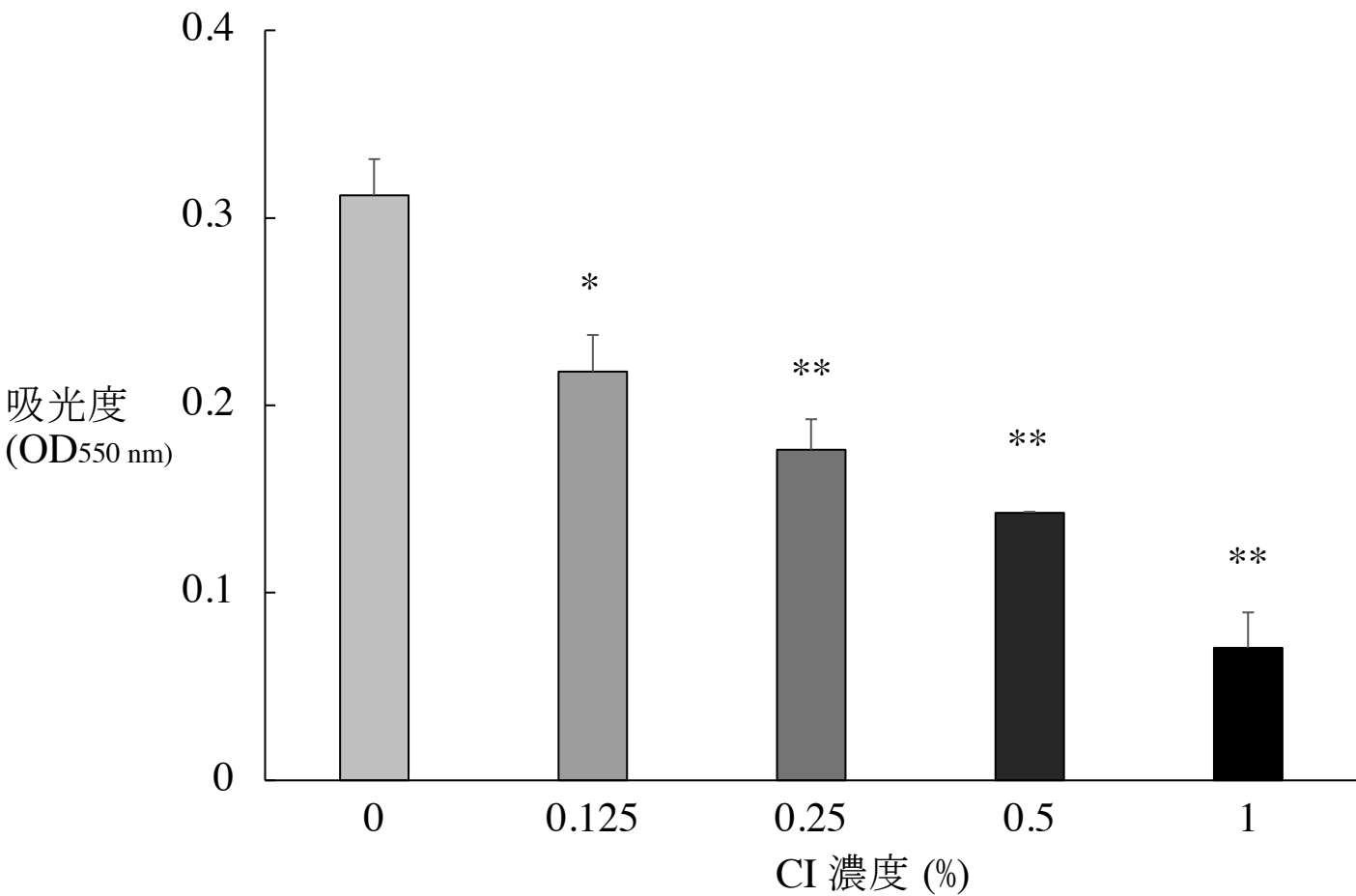


図3.

浅海春華

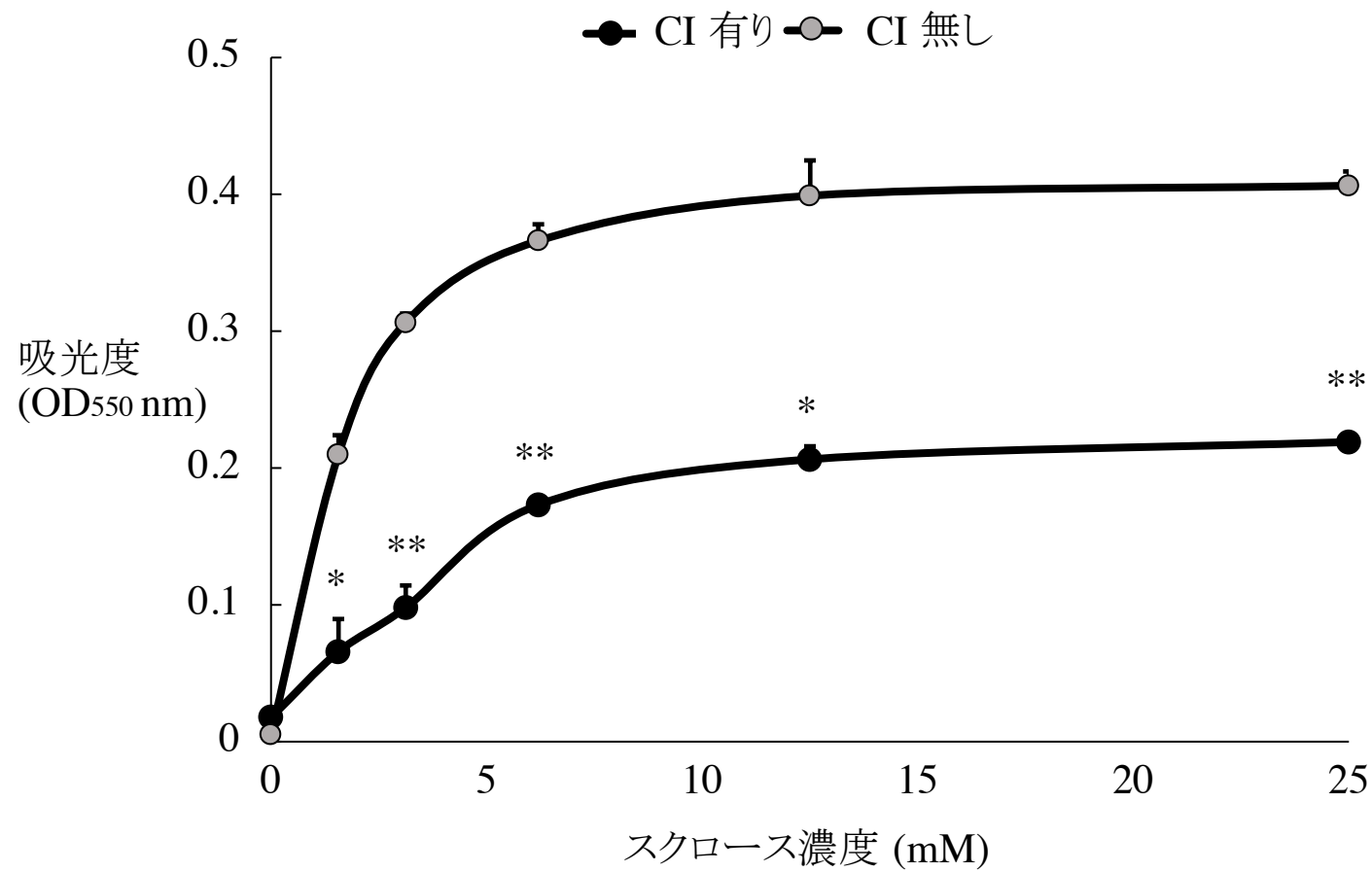


図4.

浅海春華

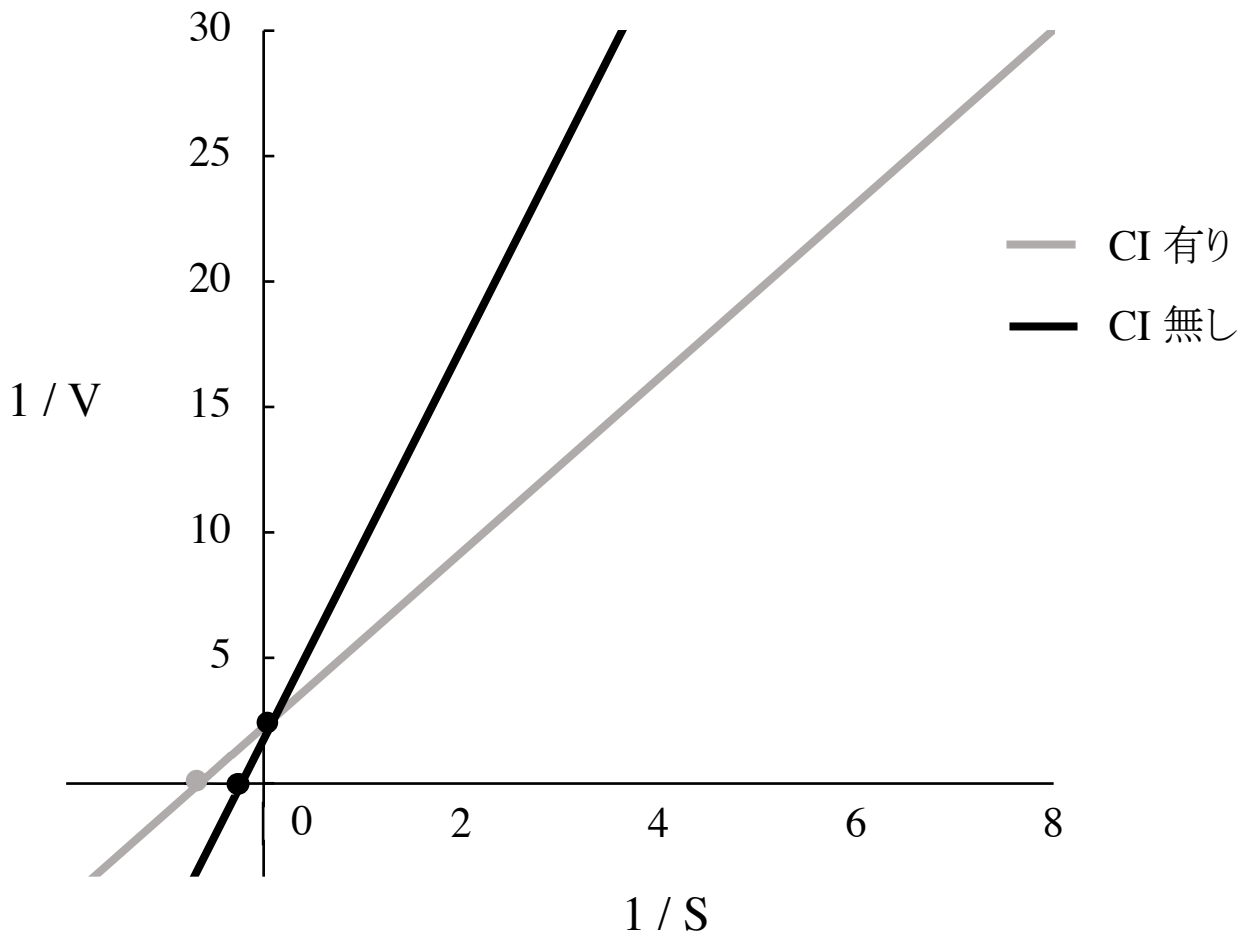
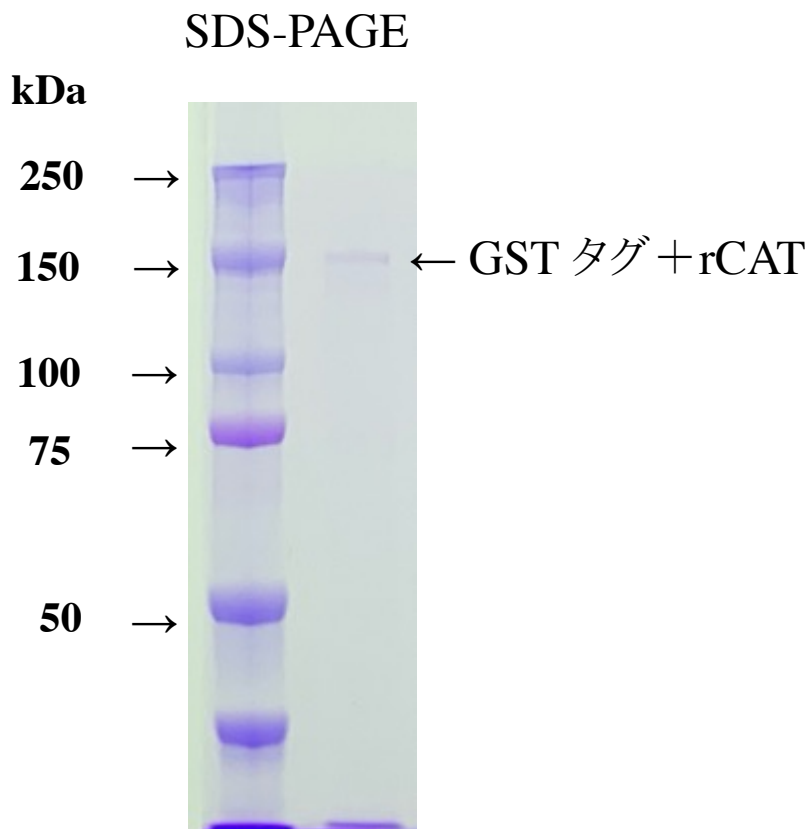


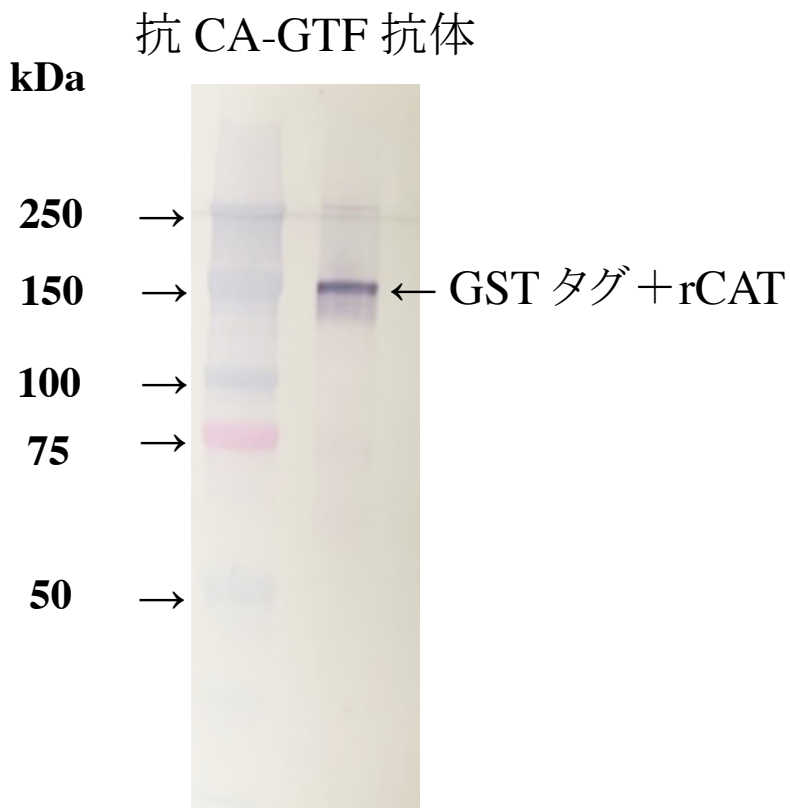
図5.

浅海春華

A



B



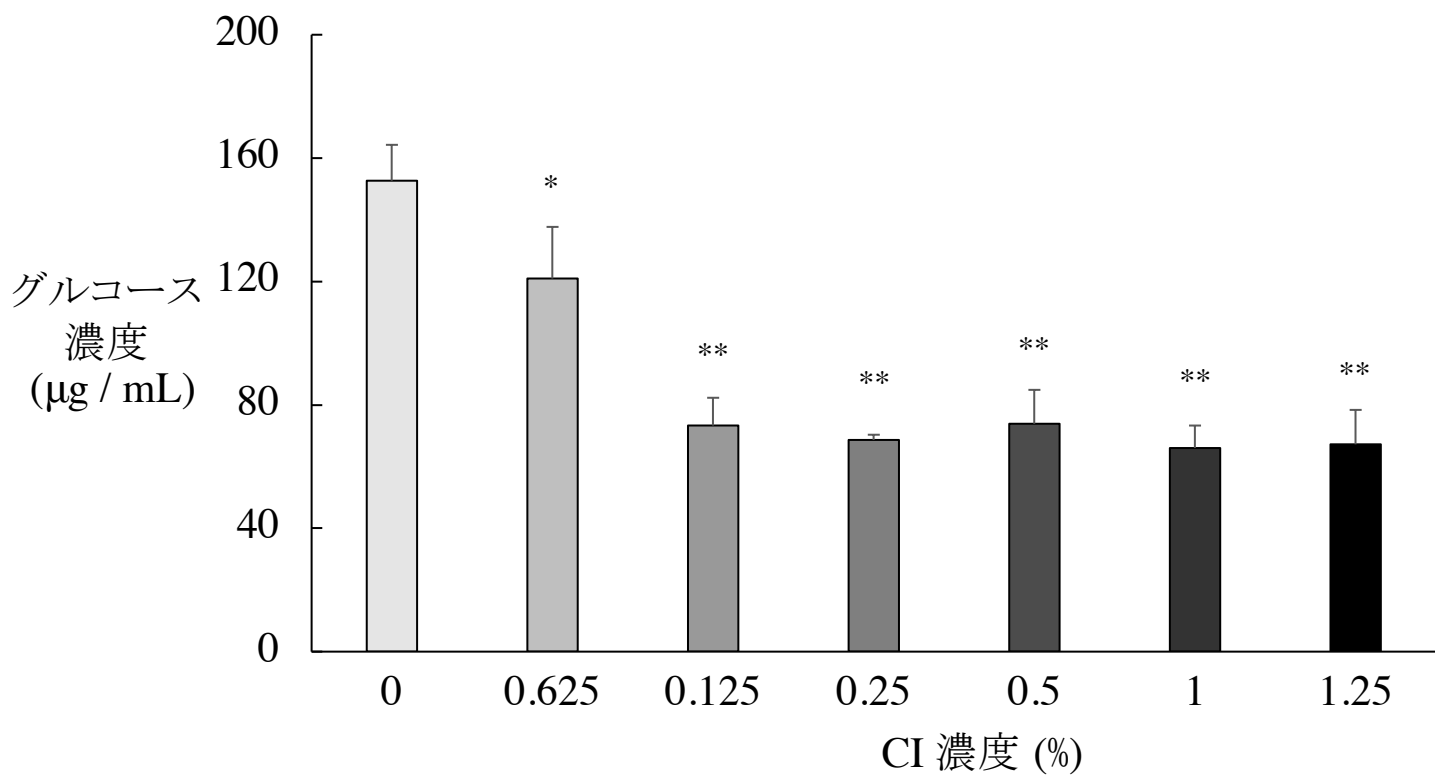


図7.

浅海春華

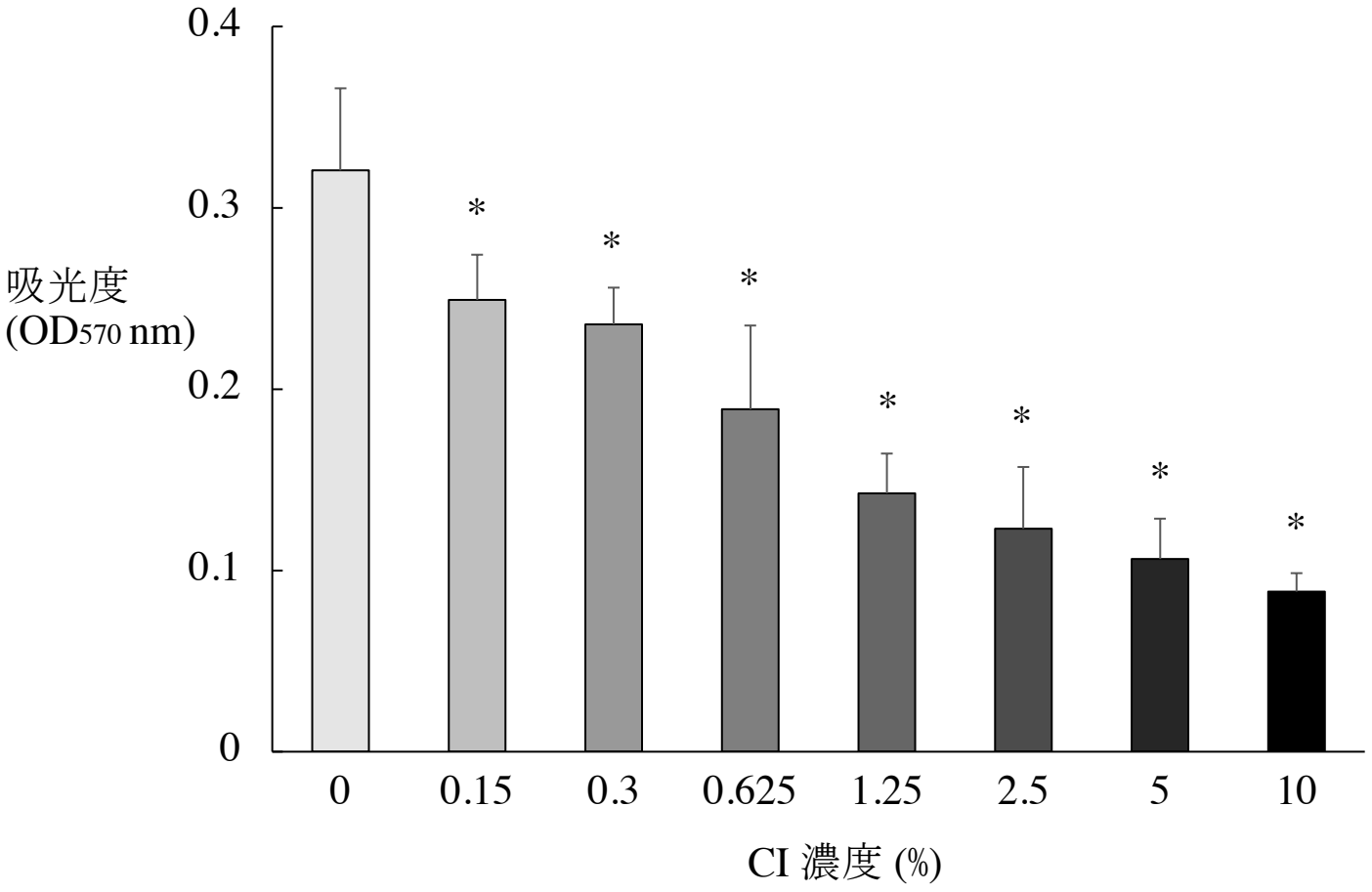
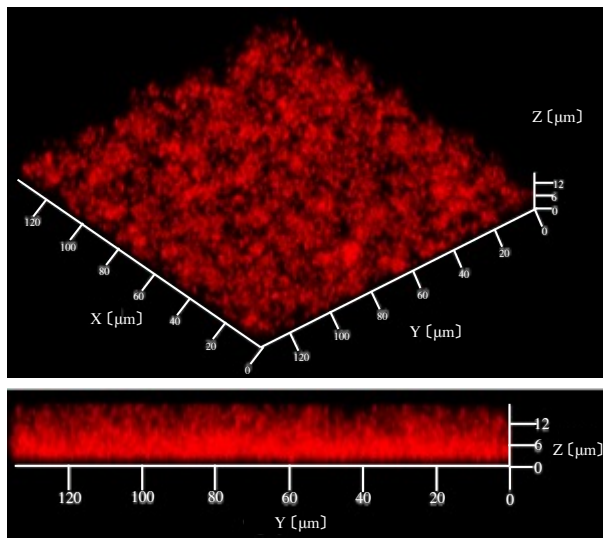


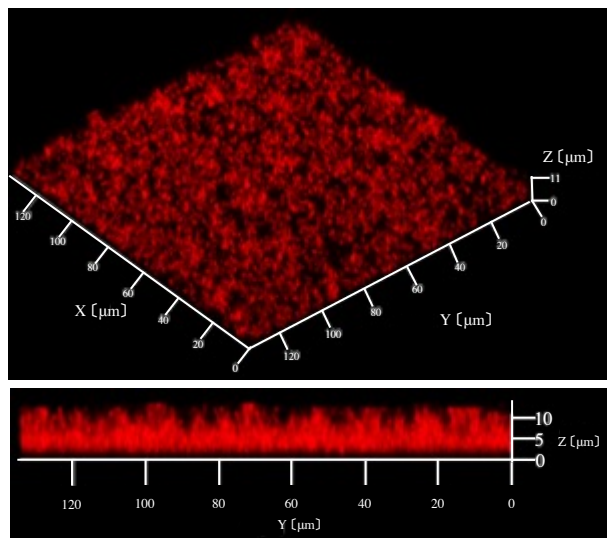
図8.

浅海春華

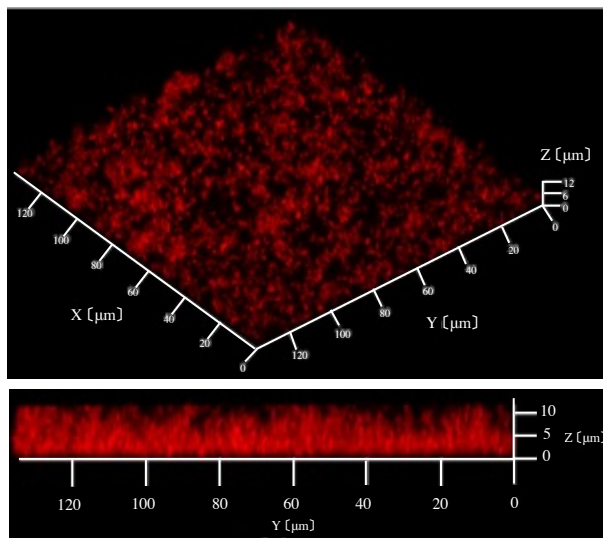
(1) 0%



(2) 2.5%



(3) 5%



(4) 10%

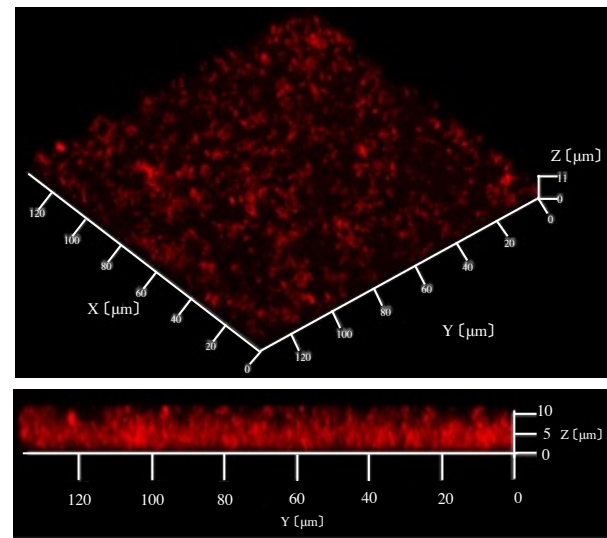


図9-A.

浅海春華

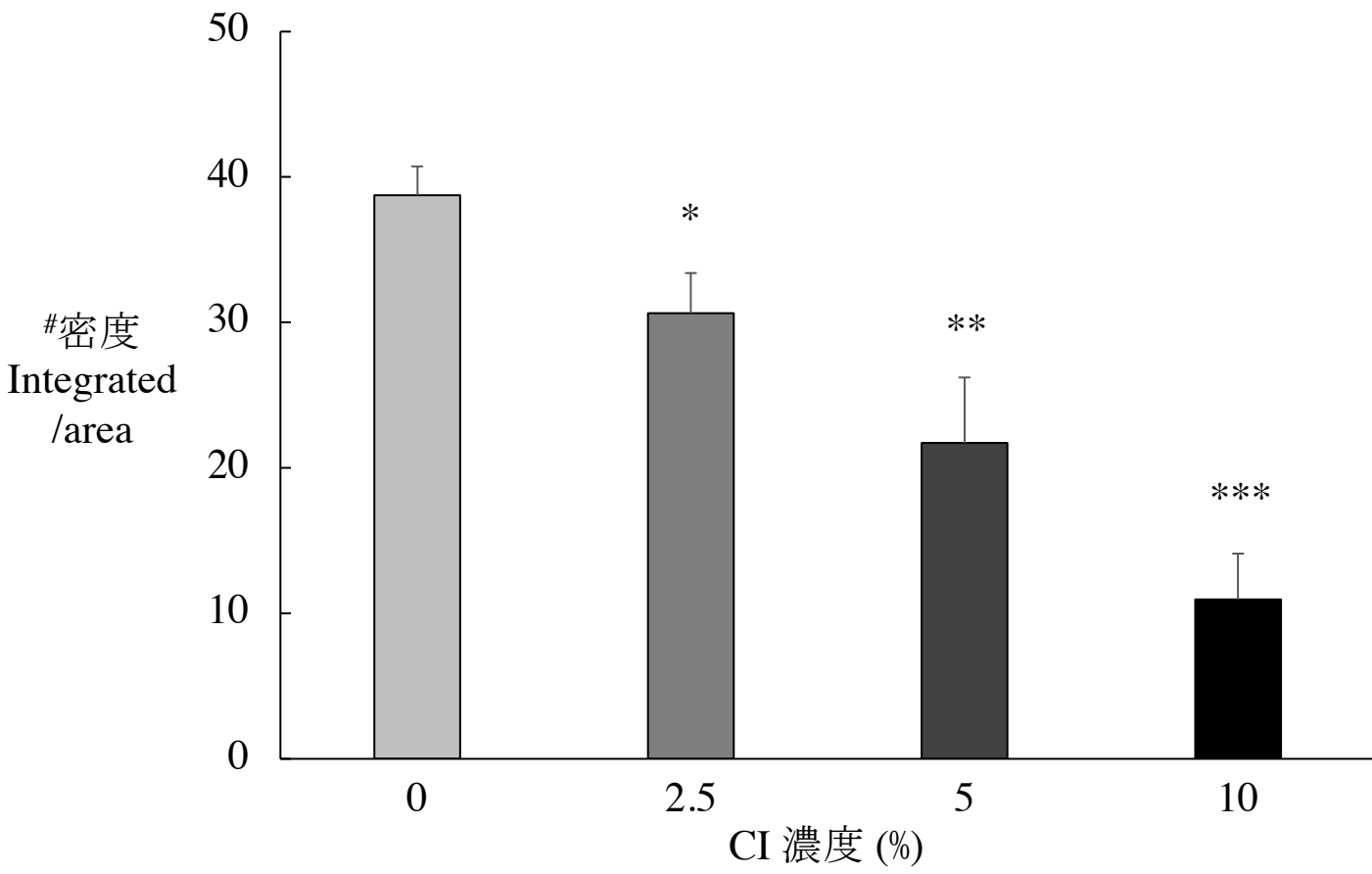
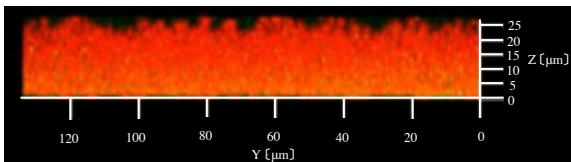
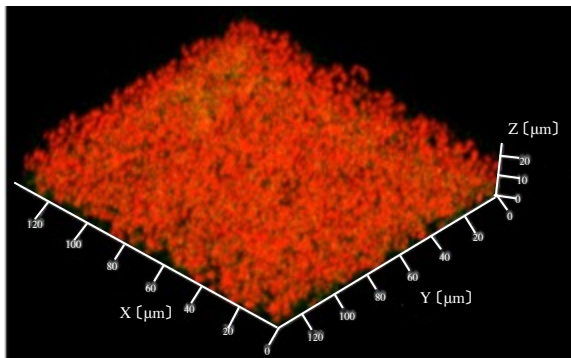


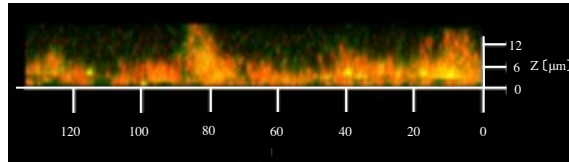
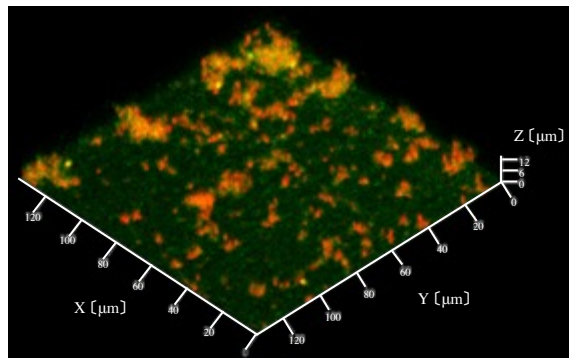
図9-B.

浅海春華

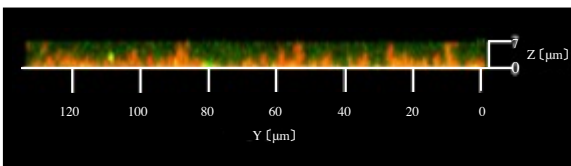
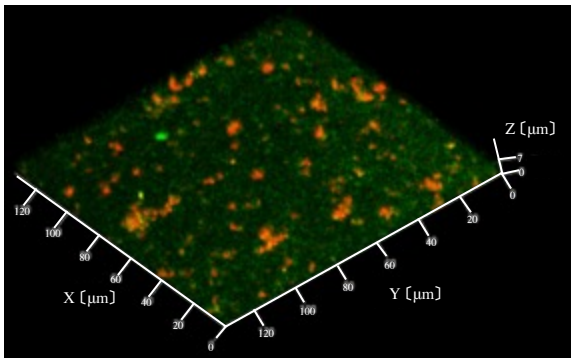
(1) 0%



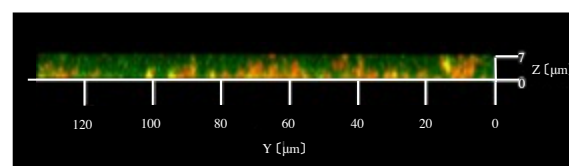
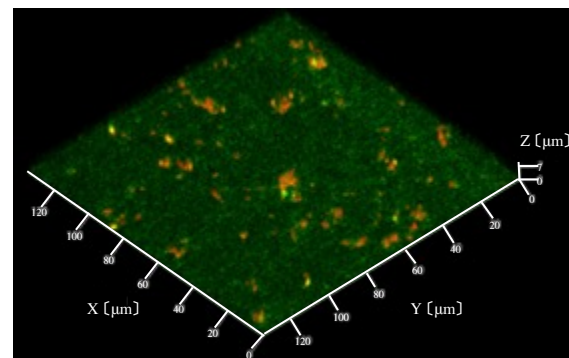
(2) 2.5%



(3) 5%



(4) 10%



赤色:菌体外多糖 緑色:菌体

図10.

浅海春華

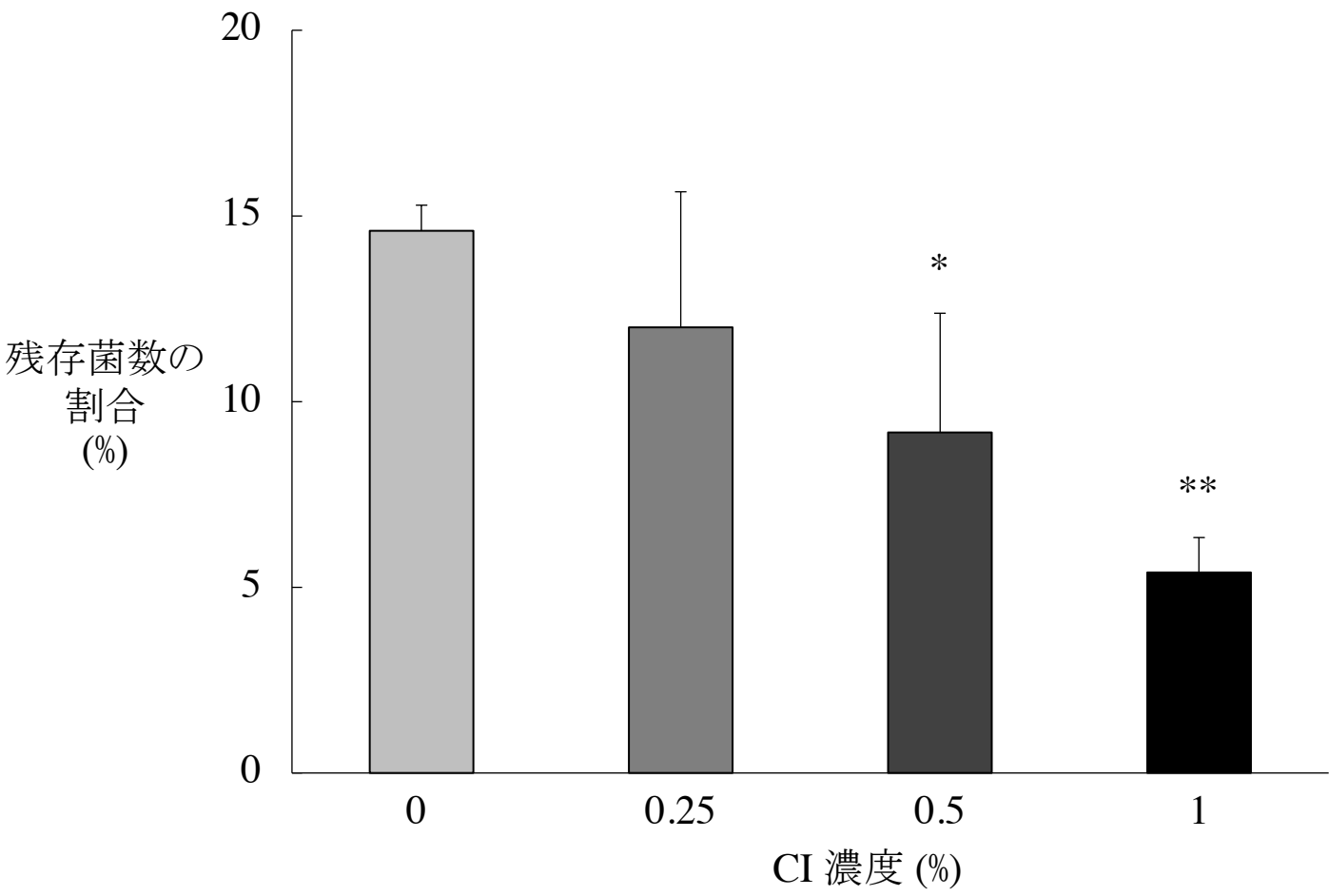


図11.

浅海春華

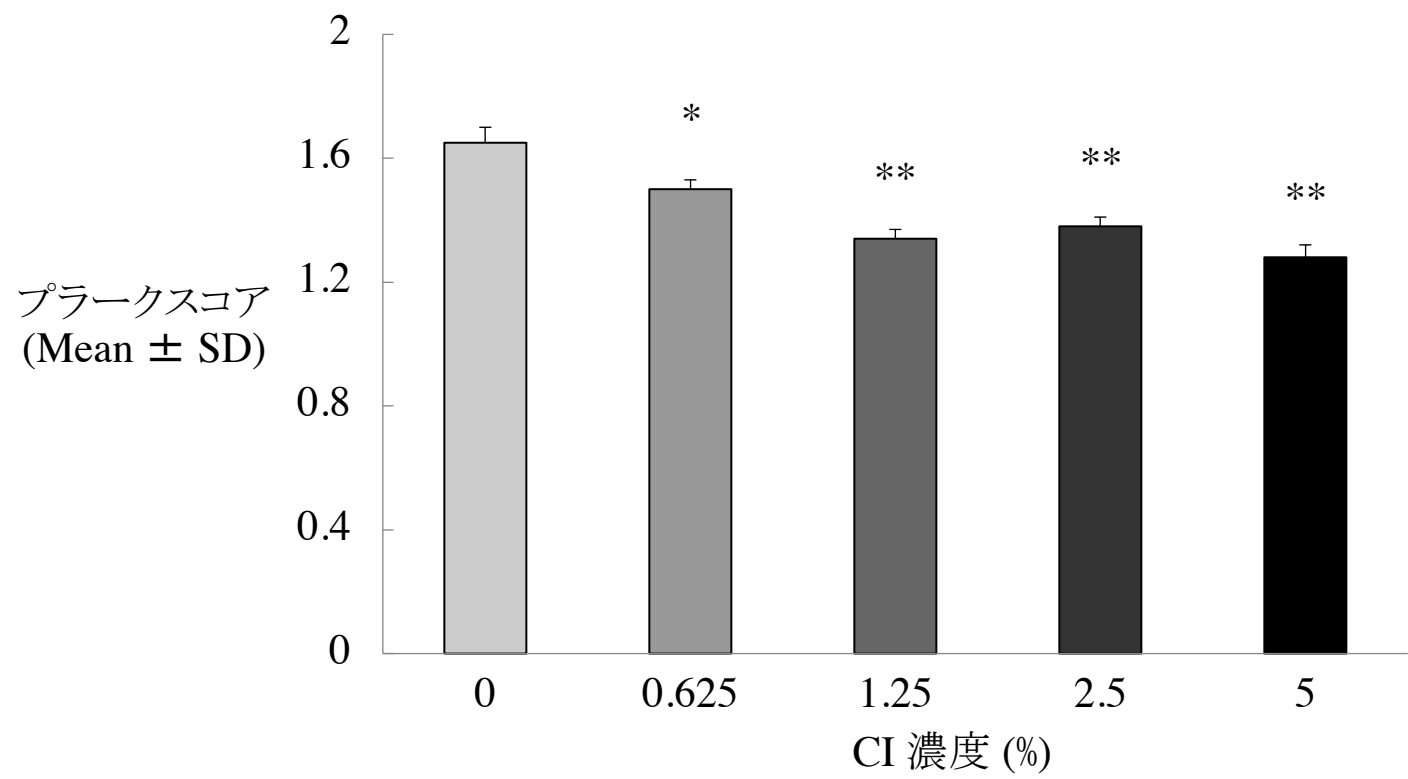


図12.

浅海春華

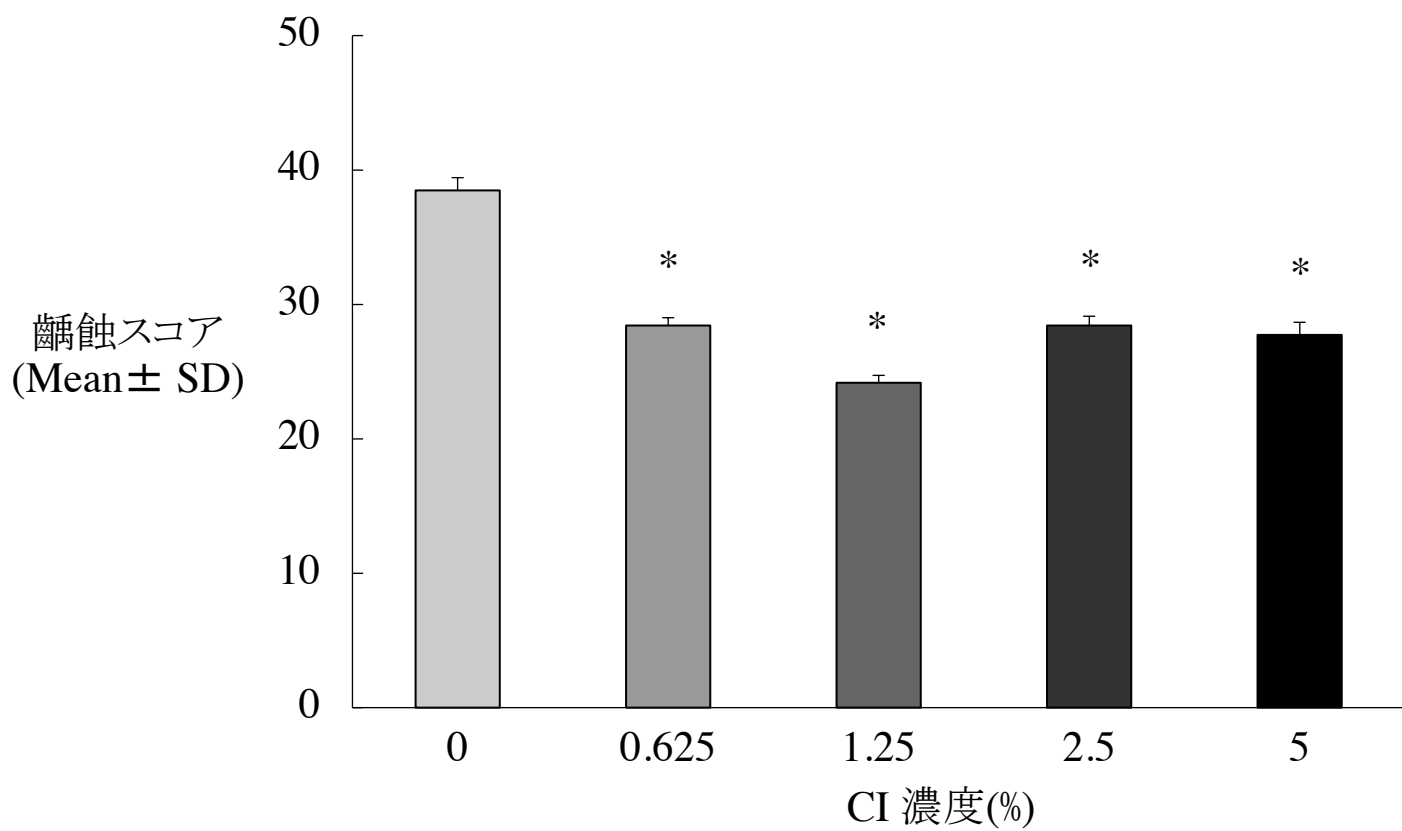


図13.

浅海春華

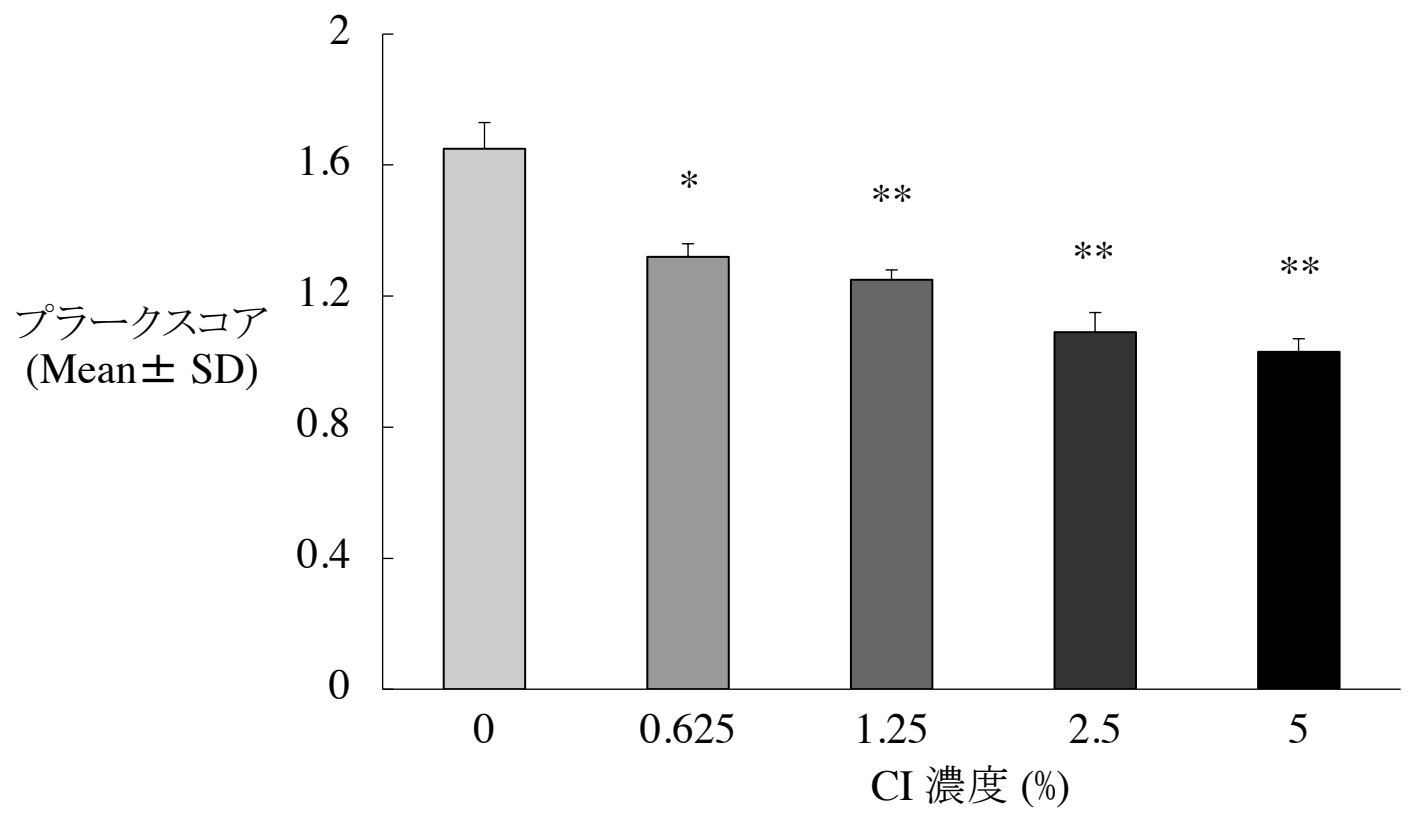


図14.

浅海春華

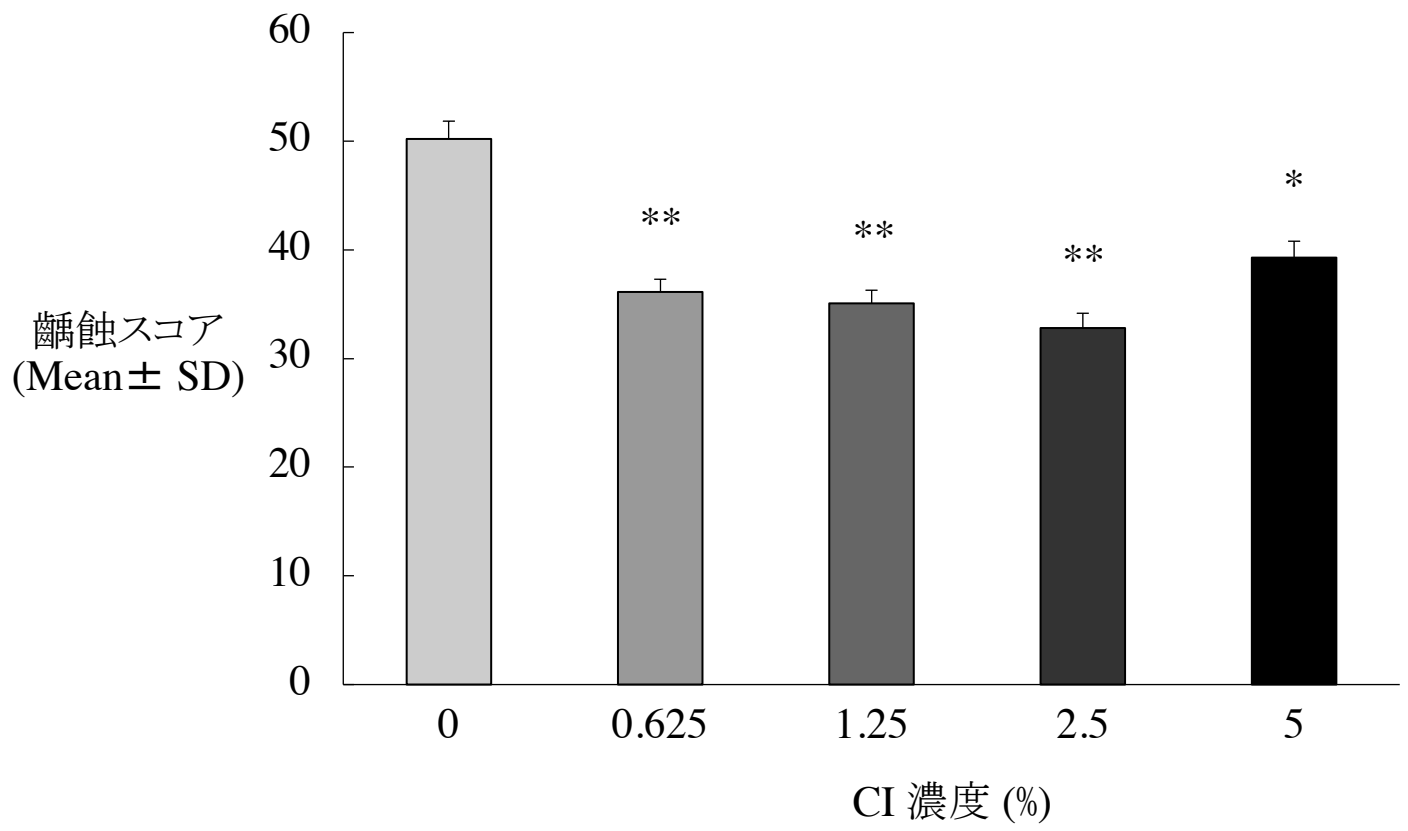


図15.

浅海春華