

## ORIGINAL ARTICLE

# Genetic analysis in Japanese patients with osteogenesis imperfecta: Genotype and phenotype spectra in 96 probands

Yousuke Higuchi<sup>1</sup>  | Kosei Hasegawa<sup>2</sup>  | Natsuko Futagawa<sup>1,2</sup> | Miho Yamashita<sup>3</sup> | Hiroyuki Tanaka<sup>4</sup> | Hirokazu Tsukahara<sup>1</sup>

<sup>1</sup>Department of Pediatrics, Okayama University Graduate School of Medicine, Dentistry and Pharmaceutical Sciences, Okayama, Japan

<sup>2</sup>Department of Pediatrics, Okayama University Hospital, Okayama, Japan

<sup>3</sup>Faculty of Human Life Sciences, Notre Dame Seishin University, Okayama, Japan

<sup>4</sup>Department of Pediatrics, Okayama Saiseikai General Hospital, Okayama, Japan

## Correspondence

Kosei Hasegawa, Department of Pediatrics, Okayama University Hospital, 2-5-1 Shikata-cho, Kita-ku, Okayama 700-8558, Japan.  
Email: haseyan@md.okayama-u.ac.jp

## Funding information

Grant-in-Aid for Scientific Research (No. 23791177) from the Japan Society for the Promotion of Science. Grant-in-Aid for Health Labor Sciences Research (No. 201128153B and 201324078B) from the Ministry of Health, Labor and Welfare of Japan. Grant-in-Aid for Practical Research Project for Rare/Intractable Diseases (No. 16ek0109135h0002) from the Japan Agency for Medical Research and Development.

## Abstract

**Background:** Osteogenesis imperfecta (OI) is a rare connective-tissue disorder characterized by bone fragility. Approximately 90% of all OI cases are caused by variants in COL1A1 or COL1A2. Additionally, IFITM5 variants are responsible for the unique OI type 5. We previously analyzed COL1A1/2 variants in 22 Japanese families with OI through denaturing high-performance liquid chromatography screening, but our detection rate was low (41%).

**Methods:** To expand the genotype-phenotype correlations, we performed a genetic analysis of COL1A1/2 and IFITM5 in 96 non-consanguineous Japanese OI probands by Sanger sequencing.

**Results:** Of these individuals, 54, 41, and 1 had type 1 (mild), type 2–4 (moderate-to-severe), and type 5 phenotypes, respectively. In the mild group, COL1A1 nonsense and splice-site variants were prevalent ( $n = 30$  and  $20$ , respectively), but there were also COL1A1 and COL1A2 triple-helical glycine substitutions ( $n = 2$  and  $1$ , respectively). In the moderate-to-severe group, although COL1A1 and COL1A2 glycine substitutions were common ( $n = 14$  and  $18$ , respectively), other variants were also detected. The single case of type 5 had the characteristic c.-14C>T variant in IFITM5.

**Conclusion:** These results increase our previous detection rate for COL1A1/2 variants to 99% and provide insight into the genotype-phenotype correlations in OI.

## KEYWORDS

*COL1A1*, *COL1A2*, *IFITM5*, Osteogenesis imperfecta, variant

## 1 | INTRODUCTION

Osteogenesis imperfecta (OI) is a hereditary connective-tissue disease with an incidence of 1:10,000–20,000 births. It is characterized by various degrees of bone fragility and fractures, blue sclera, dentinogenesis imperfecta, and onset

of hearing loss in young adulthood (Marini et al., 2017). The spectrum of clinical severity ranges from mild to severe, and the four classical categories proposed by Silience et al., (1979) have recently been re-categorized into five (Mortier et al., 2019; Van Dijk & Silience, 2014). OI type 1 is the mildest form characterized by straight limbs (non-deforming).

This is an open access article under the terms of the Creative Commons Attribution-NonCommercial-NoDerivs License, which permits use and distribution in any medium, provided the original work is properly cited, the use is non-commercial and no modifications or adaptations are made.

© 2021 The Authors. *Molecular Genetics & Genomic Medicine* published by Wiley Periodicals LLC.

Type 2 is perinatally lethal, and is characterized by the presence of intrauterine fractures (perinatally lethal). Type 3 is the most severe form in which patients survive the neonatal period. It presents with multiple fractures and progressive skeletal deformities (progressively deforming). Patients with type 4 OI show a severity intermediate between those of type 1 and 3 patients. They present with varying degrees of bone deformity (moderately deforming). Type 5 is characterized by moderate-to-severe bone fragility. It is unique in the sense that it presents with ossification of the interosseous membrane, radial head dislocation, subphyseal metaphyseal radiodense bands, and hyperplastic callus formation (Glorieux et al., 2000).

Type I collagen is a fundamental component of the extracellular matrices of the bone, skin, tendon, and other connective-tissue types. It consists of two  $\alpha 1$  (I) and one  $\alpha 2$  (I) polypeptide chains encoded by *COL1A1* and *COL1A2*, respectively. Each chain has triple-helical domains composed of Gly-X-Y tripeptide repeats and is assembled into a heterotrimer. The helical domain is flanked by globular N- and C-terminal propeptides. The assembly proceeds from the C-terminal toward the N-terminal. Type I procollagen is secreted from the rough endoplasmic reticulum (ER), and then the C- and N-terminal propeptides are cleaved off. Most genetic defects affecting bone metabolism cause the recessive forms of OI: (i) posttranslational modification (*CRTAP*, *P3H1*, and *PP1B*), (ii) processing and crosslinking (*SERP1H1*, *FKBP10*, *PLOD2*, and *BMP1*), (iii) osteoblast differentiation and function (*SP7*, *TMEM38B*, *WNT1*, *CREB3L1*, *SPARC*, *SEC24D*, and *MBTPS2*), or (iv) bone mineralization and resorption (*PLS3* and *SERPINF1*) (Marini et al., 2017; Etich et al., 2020). Nevertheless, dominant *COL1A1* and *COL1A2* changes occur in ~90% of OI patients (Marini et al., 2017). Reduced levels of wildtype collagens, as in *COL1A1* haploinsufficiency, cause a mild OI phenotype. In contrast, structural abnormalities develop mainly in the more severe forms of OI. Substitution of glycine especially with serine within the Gly-X-Y tripeptide repeat region is the most common triple-helical assembly disruption in type I procollagen (Lindahl et al., 2015; Marini et al., 2007; Rauch et al., 2010). OI type 5 is caused by the heterozygous variant c.-14C>T in the 5'-UTR of *IFITM5*. This gene encodes interferon-induced transmembrane protein-5, which is involved in early bone mineralization (Cho et al., 2012; Semler et al., 2012). Several studies have reported that this particular variant is the third most common change found in OI patients (Bardai et al., 2016; Liu et al., 2017; Patel et al., 2015).

OI is mainly caused by variants in type I collagen; however, the genetic analysis of OI is laborious and time-consuming because type I collagen genes are large (*COL1A1* and *COL1A2* have 51 and 52 exons within 18 and 38 kb, respectively) and have no apparent variant hotspots. Limited published data are available on the molecular diagnosis of OI

in Japan (Kanno et al., 2018; Ohata et al., 2019). We previously reported six *COL1A1* and three *COL1A2* variants in 22 families with OI through Sanger sequencing and heteroduplex screening using denaturing high-performance liquid chromatography (DHPLC) (Kataoka et al., 2007). Nevertheless, the detection rate was low (41%) and changes in *IFITM5* were not analyzed. In the present study, we investigated the genotype and phenotype spectra of a larger group of Japanese patients with OI.

## 2 | METHODS

### 2.1 | Editorial policies and ethical considerations

All the procedures in this study were performed in accordance with the 1964 Helsinki Declaration and 2003 Japanese Ethical Guidelines for Clinical Research, as well as their later amendments. This study was approved by the Ethics Committee of Okayama University Hospital (No. 1701-038). Written informed consent for the genetic analyses and publication was obtained from the probands and/or their legal guardians.

### 2.2 | Subjects

Whole-blood or DNA samples were obtained between March 2010 and January 2020 from non-consanguineous Japanese OI probands in our facility and 41 other nationwide facilities for the genetic analysis of *COL1A1*, *COL1A2*, and *IFITM5*. Patients were clinically diagnosed based on bone fragility, recurrent fractures, and bone deformity with or without family history by their attending physicians, and the diagnoses were afterward confirmed by one of the authors with sufficient experience (KH or HTa). Clinical information, including age, sex, family history, Sillence classification, extraskelatal features (blue sclera, dentinogenesis imperfecta (DI), and hearing loss), and radiographs, was also obtained. Subjects were classified into three age-based categories namely, child (0–12 years), adolescent (13–18 years), and adult (19 years and above). Where available, baseline bone mineral density (BMD) (before bisphosphonate treatment) and Z-score of the lumbar spine evaluated through dual-energy X-ray absorptiometry were also collected. OI types 1–4 were re-classified as “mild OI (OI type 1)” and “moderate-to-severe OI (OI types 2–4)” because OI classification depends on the amount of clinical information available and is somewhat subjective (Bardai et al., 2016). The number and frequency of fractures are likely to be affected by the patient's age, treatment method (i.e., modified by bisphosphonate therapy), and also depends on the patient's or their family's recollection, especially in

elder patients. Categories were determined according to the presence (moderate-to-severe OI) or absence (mild OI) of any deformity in the lower extremities as a simpler severity indicator (Van Dijk & Sillence, 2014). Bone fragility was defined as 1) prenatal bowing, shortening, or fractures of long bones: 2) minor postnatal trauma or unexplained bone fractures.

## 2.3 | Sanger sequencing

Genomic DNA was extracted from blood samples with a genomic DNA Extraction Kit (Qiagen) by following the manufacturer's instructions. Previously, PCR primers corresponding to all the exons or >30-bp regions flanking the exon-intron junctions of *COL1A1* and *COL1A2* have been used (Kataoka et al., 2007; Körkkö et al., 1998). From these previously tested primers, 16 and 22 primer pairs, spanning multiple exons, were selected for *COL1A1* and *COL1A2*, respectively. Primers for *IFITM5* were designed. The primer sets and PCR conditions are shown in Data S1. Amplicons were analyzed on a 3% agarose gel and purified using a QIAquick Purification Kit (Qiagen). Sequencing was performed in a BigDye Terminator v. 3.1 Cycle Sequencing Kit and the ABI Prism 310 Genetic Analyzer (Applied Biosystems). Raw sequencing data are available upon request. First, *IFITM5* was sequenced in individuals clinically suspected of being OI type 5. *COL1A1* and *COL1A2* were then sequenced (exons 1–51 and 1–52, respectively). Sequence reads were aligned with reference sequences from GenBank (*COL1A1*: NG\_007400.1; *COL1A2*: NG\_007405.1; and *IFITM5*: NG\_032892.1). Nucleotides were numbered according to the cDNA references (*COL1A1*: NM\_000088.3; *COL1A2*: NM\_000089.3; and *IFITM5*: NM\_001025295.3). Amino acid residues were numbered according to the protein references (*COL1A1*: NP\_000079.2; *COL1A2*: NP\_000080.2; and *IFITM5*: NP\_001020466.1). Non-synonymous or splice-site variants were considered putative mutations if they were not listed in the Single Nucleotide Polymorphism (SNP) database or 1,000 Genomes Project. Variant pathogenicity was analyzed with PolyPhen-2 (<http://genetics.bwh.harvard.edu/pph2/>), PROVEAN (<http://provean.jcvi.org/index.php>), Mutation Taster (<http://www.mutationtaster.org/>), and Human Splicing Finder (<http://www.umd.be/HSF3/HSF.shtml>) (Adzhubei et al., 2010; Choi et al., 2012; Schwarz, Rödelberger, Schuelke, & Seelow, 2010; Desmet et al., 2009). All the variants were classified according to the ACMG variant interpretation guideline (Richards et al., 2015). Allele frequencies of novel missense variants were examined in the genome aggregation database (gnomAD, <https://gnomad.broadinstitute.org/>). The novelty was defined according to the Osteogenesis Imperfecta Variant Database (<http://www.le.ac.uk/ge/collagen/>), and any causal variant

was searched from *COL1A1* exon 1 and progress through *COL1A2* exon 52. If the variant had previously been reported and corresponded to the phenotypes, the remaining exons were not sequenced. The proband variant data were deposited in the Global Variome shared LOVD database (<https://databases.lovd.nl/>). A segregation analysis of the proband relatives was optionally conducted.

## 2.4 | Statistical analysis

Data are presented as median and range. Either, a Pearson's chi-square test or a Fisher's exact test was applied to categorical data and the Mann–Whitney *U* test was used on continuous variables.  $p < 0.05$  was considered a significant difference (Wasserstein et al., 2019). All the analyses were run in Stata v. 14.2 (StataCorp).

## 3 | RESULTS

### 3.1 | Clinical characteristics

The present study included 96 probands (52 males and 44 females) from 96 unrelated families. Of these, 44 had a family history of OI. The median age at the time of analysis was 4.0 years (range, 0–52 years). Fifty-four (56.3%) were classified as the mild OI group, 41 (42.7%) were in the moderate-to-severe OI group, and 1 (1.0%) with the ossification of the interosseous membrane and radial head dislocation was categorized as OI type 5. Eighteen in the mild group and 20 in

TABLE 1 Clinical characteristics of the study population

	Mild OI (n = 54)	Moderate-to-severe OI (n = 41)	OI type 5 (n = 1)
Sex (male/female)	32/22	20/21	0/1
Age (years, median (range))	4.0 (0–52)	2.0 (0–50)	26
Child (0–12)	44	27	0
Adolescent (13–18)	2	7	0
Adult (19 and above)	8	7	1
Blue sclera	46/47	20/28	0/1
Dentinogenesis imperfecta	9/29	9/15	0/1
Hearing loss	4/22	0/4	0/1
Family history	31/54	12/41	1/1

OI, osteogenesis imperfecta.

Results represent number of positives/total.

TABLE 2 Summary of the phenotype spectra

Group	Gene	Patient ID	Age	Sex	Bluesclera	DI	Deafness	Lower extremity deformities	Recurrent fractures	Bone fragility	Number of affected family members who had the identical variant	Number of affected family members who were not sequenced
Mild	COL1A1	1	52	F	-	N/A	N/A	-	+	N/A		1
		2	22	M	+	+	+	-	+	+		1
		3	8	F	+	+	N/A	-	+	+		1
		4	1	M	N/A	N/A	N/A	-	+	N/A		
		5	4	F	+	-	N/A	-	+	+	1	
		6	1	F	+	N/A	N/A	-	+	+	1	
		7	28	F	+	N/A	N/A	-	+	N/A		
		8	0	F	+	N/A	N/A	-	+	+		
		9	1	M	+	N/A	N/A	-	-	-		
		10	0	M	+	N/A	N/A	-	+	+		
		11	1	F	+	N/A	N/A	-	-	-		1
		12	28	M	+	+	-	-	N/A	N/A		1
		13	7	M	+	-	-	-	N/A	N/A	1	
		14	11	M	+	-	+	-	+	+		
		15	38	F	+	+	+	-	+	+		
		16	0	F	+	-	-	-	-	-	2	
		17	7	F	+	-	-	-	+	+		
		18	0	F	N/A	N/A	N/A	-	N/A	N/A	1	
		19	8	M	+	N/A	N/A	-	+	+		
		20	0	M	+	-	N/A	-	-	+		
		21	0	M	+	N/A	N/A	-	-	-	1	
		22	12	M	+	-	-	-	+	+		
		23	4	F	N/A	N/A	N/A	-	+	+		
		24	11	F	+	N/A	-	-	+	+	1	
		25	0	M	+	N/A	N/A	-	-	+	1	
		26	3	M	+	+	N/A	-	-	+	1	
		27	40	F	N/A	N/A	N/A	-	N/A	N/A		
		28	10	M	+	+	N/A	-	+	+	1	
		29	0	M	+	N/A	N/A	-	-	+		1

(Continues)

TABLE 2 Continued

Group	Gene	Patient ID	Age	Sex	Bluesclera	DI	Deafness	Lower extremity deformities	Recurrent fractures	Bone fragility	Number of affected family members who had the identical variant	Number of affected family members who were not sequenced
		30	18	M	+	-	-	-	+	N/A	1	
		31	4	M	+	N/A	N/A	-	-	-	2	
		32	0	F	N/A	N/A	N/A	-	-	-		1
		33	28	M	+	-	-	-	+	+	2	
		34	3	M	+	-	N/A	-	+	+	1	
		35	24	F	+	-	+	-	N/A	N/A		
		36	2	M	+	-	-	-	+	+	4	
		37	11	M	+	-	-	-	+	+		
		38	4	M	+	N/A	N/A	-	+	+		
		39	9	M	+	-	-	-	N/A	N/A		
		40	2	M	+	+	N/A	-	+	+	2	
		41	12	M	+	-	N/A	-	+	N/A	1	
		42	0	F	+	N/A	N/A	-	-	+	1	
		43	1	F	N/A	N/A	N/A	-	N/A	N/A	1	
		44	3	F	+	+	-	-	+	+	2	1
		45	11	M	+	+	-	-	+	+		
		46	1	F	+	-	-	-	+	+		1
		47	0	M	+	N/A	N/A	-	+	+		1
		48	3	M	+	-	-	-	+	-		
		49	12	M	N/A	N/A	N/A	-	+	+		
		50	10	M	+	-	-	-	N/A	N/A		
		51	5	F	+	-	N/A	-	+	+		
		52	14	M	+	N/A	N/A	-	+	+		
	COL1A2	53	0	F	+	N/A	-	-	+	+	2	
		54	8	M	+	-	-	-	+	+		
Moderate to severe	COL1A1	1	14	M	+	-	N/A	+	+	+		
		2	0	F	N/A	N/A	N/A	+	+	+		
		3	0	F	+	N/A	N/A	+	+	+		

Continues

TABLE 2 Continued

Group	Gene	Patient ID	Age	Sex	Bluesclera	DI	Deafness	Lower extremity deformities	Recurrent fractures	Bone fragility	Number of affected family members who had the identical variant	Number of affected family members who were not sequenced
		4	36	F	N/A	N/A	N/A	+	+	+		
		5	4	M	+	+	N/A	+	+	+		
		6	1	M	+	N/A	N/A	+	+	+		
		7	33	F	+	+	-	+	+	+		
		8	0	M	+	N/A	N/A	+	+	+		
		9	0	M	N/A	N/A	N/A	+	N/A	N/A	1	
		10	15	F	-	+	N/A	+	+	+		
		11	0	M	+	N/A	N/A	+	+	+	1	
		12	0	F	-	N/A	N/A	+	-	+	1	
		13	2	F	N/A	N/A	N/A	+	+	+		
		14	0	M	N/A	N/A	N/A	+	+	+		
		15	30	F	+	+	N/A	+	+	+		
		16	16	M	+	-	N/A	+	+	+	1	
		17	28	F	+	+	N/A	+	+	+		
		18	11	M	-	-	-	+	+	+		
		19	17	F	+	+	N/A	+	+	+		
		20	6	M	-	-	-	+	+	+		
		21	0	F	-	N/A	N/A	+	+	+	1	
		22	7	M	+	N/A	N/A	+	+	+	1	
	COL1A2	23	33	M	+	+	N/A	+	+	+	1	
		24	0	M	+	N/A	N/A	+	+	+		
		25	0	M	N/A	N/A	N/A	+	+	+		
		26	1	M	+	N/A	N/A	+	+	+		1
		27	13	M	+	N/A	N/A	+	+	+		
		28	0	F	-	N/A	N/A	+	+	+		
		29	0	F	N/A	N/A	N/A	+	+	+		
		30	13	M	N/A	N/A	N/A	+	N/A	N/A		
		31	50	F	N/A	N/A	N/A	+	+	+		
		32	0	M	N/A	N/A	N/A	+	+	+	1	

Continues

TABLE 2 Continued

Group	Gene	Patient ID	Age	Sex	Bluesclera	DI	Deafness	Lower extremity deformities	Recurrent fractures	Bone fragility	Number of affected family members who had the identical variant	Number of affected family members who were not sequenced
		33	3	F	-	N/A	N/A	+	1	+	1	
		34	1	F	N/A	N/A	N/A	+	+	+		
		35	7	M	-	N/A	N/A	+	+	+	1	
		36	13	F	+	-	N/A	+	+	+		1
		37	0	F	+	-	-	+	+	+		
		38	0	F	N/A	N/A	N/A	+	+	+		
		39	42	F	+	+	N/A	+	+	+		
		40	0	M	N/A	N/A	N/A	+	+	+		
		41	1	F	+	+	N/A	+	+	+		
OI type 5	IFITM5	1	26	F	-	-	-	-	+	+	1	

Abbreviations: DI, dentinogenesis imperfecta; N/A, not available.

the moderate-to-severe group were aged  $\leq 1$  years. All infantile patients without extra-skeletal manifestation and family history showed moderate-to-severe OI. The scleral color was reported in 76 cases. Nearly all of the mild OI patients had blue sclera, compared with only 71.4% of the moderate-to-severe OI patients ( $p = 0.001$ ). Dental status was reported for 45 cases, and nine from each group presented with DI ( $p = 0.064$ ). Hearing status was reported for 27 cases. Four comparatively older cases (11 y, 22 y, 24 y, and 38 y) in the mild OI group had a hearing impairment. The BMD Z-scores of the lumbar spine in bisphosphonate-naïve were lower in the moderate-to-severe OI group ( $n = 5$ ) than in the mild OI group ( $n = 17$ ) ( $p = 0.001$ ) (Figure S1) (Tables 1 and 2).

### 3.2 | Genotype-phenotype correlation

All but one of the probands had a pathogenic or likely pathogenic variant. There were 60, 21, and 1 variants of *COL1A1*, *COL1A2*, and *IFITM5* identified, respectively (Table 3). Thirty-six novel variants were discovered. Ten variants were detected two or three times. All the probands and affected family members with the same variant had similar OI severities. Nearly all the cases with *COL1A1* splice-site or nonsense variants (97.8%) had blue sclera compared with 78.9% of the cases harboring *COL1A1* or *COL1A2* glycine substitutions. DI was present in 40.0% of the splice-site or nonsense variants, whereas 50.0% of the cases with the missense variants presented with DI. All three cases with *COL1A1* C-terminal propeptide missense variants lacked blue sclera. The OI type 5 proband had the variant c.-14C>T in *IFITM5*. A segregation analysis was performed on 32 families (21 in the mild OI group, 10 in the moderate-to-severe OI group, and 1 in the OI type 5 group), and the identified variants were validated. Most of the affected family members were patients' parent, but some offspring, siblings, grandparents, or cousins were also affected.

In the mild OI group, *COL1A1* nonsense and splice-site variants were found in 30 and 20 probands, respectively. Triple-helical domain glycine substitutions were detected in three probands. We identified a novel *de novo* noncanonical *COL1A1* splice-site variant c.696+4delA (IVS9 +4delA) (Patients ID 4) as likely pathogenic. The patient had no other variant in *COL1A1*, *COL1A2*, or *IFITM5*, and unaffected parents did not carry this variant. The *COL1A2* C-terminal propeptide variant c.3883T>C (p.Ser1295Pro) was classified as a variant of uncertain significance (VUS). It has previously been reported as benign/likely benign (rs757449082), and had a very low allele frequency in East Asian populations (0.0006). In the presented study, variants causing mild OI were distributed throughout *COL1A1* (Figure 1).

In the moderate-to-severe OI group, *COL1A1* splice-site variants were identified in three cases (c.697-1G>A

TABLE 3 Summary of the genotype spectra

Group	Gene	Patient ID	Genotype	Exon(IVS) number	Novelty <sup>a</sup>	ACMG criteria	Class	PolyPhen-2	PROVEAN	Mutation Taster	Human splicing finder
Mild	COL1A1	1	p.Cys70Ter	2	†	PVS1 PS3	Pathogenic			1	Disease causing
		2	p.Cys70Ter	2	†	PVS1 PS3	Pathogenic			1	Disease causing
		3		3		PS1 PM2	Likely pathogenic			0.999	Polymorphism Most probably affecting splicing.
		4	p.Gly130TrpfsTer39	5		PVS1 PS3	Pathogenic			1	Disease causing
		5	p.Gly130TrpfsTer39	5		PVS1 PS3	Pathogenic			1	Disease causing
		6	p.Gly130TrpfsTer39	5		PVS1 PS3	Pathogenic			1	Disease causing
		7	p.Gly145AspfsTer120	5		PVS1 PS3	Pathogenic			1	Disease causing
		8		8	†	PVS1 PS3	Pathogenic			1	Disease causing Most probably affecting splicing.
		9	p.Gly224Ser	9	†	PS1 PS3 PP1	Pathogenic	0.999	-4.788	0.999	Disease causing
		10		9	†	PS2 PM2 PP3	Likely pathogenic	Probably damaging		1	Disease causing Most probably affecting splicing.
		11	p.Glu234LysfsTer31	10		PVS1 PS3	Pathogenic			1	Disease causing
		12		10		PVS1 PS3	Pathogenic			1	Disease causing Most probably affecting splicing.
		13	p.Gln300Ter	13	†	PVS1 PS3	Pathogenic			1	Disease causing
		14	p.Ala340LysfsTer201	16	†	PVS1 PS3	Pathogenic			1	Disease causing
		15	p.Gly377AlafsTer164	17		PVS1 PS3	Pathogenic			1	Disease causing
		16	p.Arg415Ter	19		PVS1 PS3	Pathogenic			1	Disease causing
		17	p.Gly424AlafsTer117	19		PVS1 PS3	Pathogenic			1	Disease causing
		18		19		PVS1 PS3	Pathogenic			1	Disease causing Most probably affecting splicing.
		19		19		PVS1 PS3	Pathogenic			1	Disease causing Most probably affecting splicing.
		20		19		PVS1 PS3	Pathogenic			1	Disease causing Most probably affecting splicing.
		21		19	†	PVS1 PS3	Pathogenic			1	Disease causing Most probably affecting splicing.
		22		24	†	PVS1 PS3	Pathogenic			1	Disease causing Most probably affecting splicing.

(Continues)



TABLE 3 Continued

Group	Gene	Patient ID	Genotype	Exon(IVS) number	Novelty <sup>a</sup>	ACMG criteria	Class	PolyPhen-2	PROVEAN	Mutation Taster	Human splicing finder
		23	p.Pro569GlnfsTer12	25	†	PVS1 PS3	Pathogenic			1	Disease causing
		24	p.Arg598Ter	26		PVS1 PS3	Pathogenic			1	Disease causing
		25	p.Arg598Ter	26		PVS1 PS3	Pathogenic			1	Disease causing
		26	p.Arg598Ter	26		PVS1 PS3	Pathogenic			1	Disease causing Most probably affecting splicing.
		27		26		PVS1 PS3	Pathogenic			1	Disease causing Most probably affecting splicing.
		28		26		PVS1 PS3	Pathogenic			1	Disease causing Most probably affecting splicing.
		29		27	†	PVS1 PS3	Pathogenic			1	Disease causing
		30	p.Pro652GlnfsTer114	29	†	PVS1 PS3	Pathogenic			1	Disease causing
		31	p.Gly671AlafsTer95	30		PVS1 PS3	Pathogenic			1	Disease causing
		32	p.Arg697Ter	31		PVS1 PS3	Pathogenic			1	Disease causing
		33	p.Gly725AlafsTer41	32	†	PVS1 PS3	Pathogenic			1	Disease causing
		34	p.Gln822Ter	36		PVS1 PS3	Pathogenic			1	Disease causing
		35	p.Lys826ArgfsTer5	36	†	PVS1 PS3	Pathogenic			1	Disease causing
		36		37	†	PVS1 PS3	Pathogenic			1	Disease causing Most probably affecting splicing.
		37	p.Arg882Ter	38		PVS1 PS3	Pathogenic			1	Disease causing
		38		38	†	PVS1 PS3	Pathogenic			1	Disease causing Most probably affecting splicing.
		39	p.Gly971ArgfsTer138	40	†	PVS1 PS3	Pathogenic			1	Disease causing
		40		41	†	PVS1 PS3	Pathogenic			1	Disease causing Most probably affecting splicing.
		41		41	†	PVS1 PS3	Pathogenic			1	Disease causing Most probably affecting splicing.
		42		41	†	PVS1 PS3	Pathogenic			1	Disease causing Most probably affecting splicing.
		43	p.Gly1022Ala	42		PS1 PS3	Pathogenic	0.998	-5.117	0.999	Disease causing
		44		43		PVS1 PS3	Pathogenic	Probably damaging		1	Disease causing Most probably affecting splicing.

Continues

TABLE 3 Continued

Group	Gene	Patient ID	Genotype	Exon(IVS) number	Novelty <sup>a</sup>	ACMG criteria	Class	PolyPhen-2	PROVEAN	Mutation Taster	Human splicing finder
		45		43		PVS1 PS3	Pathogenic			1	Disease causing Most probably affecting splicing.
		46		44	†	PVS1 PS3	pathogenic			1	Disease causing most probably affecting splicing.
		47	p.Ile1107SerfsTer19	45	†	PVS1 PS3	Pathogenic			1	Disease causing
		48	p.Gly1121AlafsTer118	45		PVS1 PS3	Pathogenic			1	Disease causing
		49	p.Arg1141Ter	46		PVS1 PS3	Pathogenic			1	Disease causing
		50	p.Arg1141Ter	46		PVS1 PS3	Pathogenic			1	Disease causing
		51	p.Gln1240Ter	48		PVS1 PS3	Pathogenic			1	Disease causing
		52	p.Tyr1301ThrfsTer30	49	†	PVS1 PS3	Pathogenic	1	Probably damaging	0.999	Disease causing
	COL1A2	53	p.Gly334Ser	19		PS1 PS3 PP1	Pathogenic	1	Probably damaging	0.999	Disease causing
		54	p.Ser1295Pro	51	†	PM2 PM6 PP3	VUS	1	Probably damaging	1	Disease causing
Moderate to severe	COL1A1	1		9	†	PVS1 PS3	Pathogenic			1	Disease causing Most probably affecting splicing.
		2	p.Gly257Arg	11		PS1 PS3	Pathogenic	1	Probably damaging	0.999	Disease causing
		3	p.Gly299Asp	13		PS1 PS3	Pathogenic	0.999	Probably damaging	0.999	Disease causing
		4	p.Gly365Ser	17	†	PS1 PS3	Pathogenic	0.999	Probably damaging	0.999	Disease causing
		5	p.Ala408del	19	†	PM2 PM4 PM6 PP3	Likely pathogenic			0.999	Disease causing
		6	p.Gly452Ser	21	†	PS3 PM2 PM6 PP3 PP4	Likely pathogenic	0.999	Probably damaging	0.999	Disease causing
		7	p.Gly530Ser	23		PS1 PS3 PM6	Pathogenic	1	Probably damaging	0.999	Disease causing
		8		24	†	PVS1 PS3 PM6	Pathogenic			1	Disease causing Most probably affecting splicing.
		9	p.Gly560Ser	25		PS1 PS3	Pathogenic	1	Probably damaging	0.999	Disease causing
		10	p.Gly767Ser	33/34		PS1 PS3 PM6	Pathogenic	0.999	Probably damaging	0.999	Disease causing
		11	p.Gly821Ser	36		PS1 PS3	Pathogenic	1	Probably damaging	0.999	Disease causing
		12	p.Gly821Ser	36		PS1 PS3	Pathogenic	1	Probably damaging	0.999	Disease causing

Continues

TABLE 3 Continued

Group	Gene	Patient ID	Genotype	Exon(IVS) number	Novelty <sup>a</sup>	ACMG criteria	Class	PolyPhen-2	PROVEAN	Mutation Taster	Human splicing finder
		13	p.Gly866Ser	37		PS1 PS3	Pathogenic	1	-5.212	Deleterious	Disease causing
		14	p.Gly1040Ser	43		PS1 PS3	Pathogenic	1	-5.208	Deleterious	Disease causing
		15	p.Gly1040Ser	43		PS1 PS3 PM6	Pathogenic	1	-5.208	Deleterious	Disease causing
		16	p.Gly1052Cys	43	†	PS3 PM2 PP3 PP4	Pathogenic	1	-8.164	Deleterious	Disease causing
		17	p.Gly1076Ser	44		PS1 PS3	Pathogenic	1	-5.759	Deleterious	Disease causing
		18	p.Ala1375Thr	50	†	PM2 PM6 PP3 PP4	Likely pathogenic	0.997	-3.610	Deleterious	Disease causing
		19	c.4248+1G>A	50	†	PVS1 PS3	Pathogenic			1	Disease causing Most probably affecting splicing.
		20	p.Ala1443Val	51	†	PM2 PM6 PP3 PP4	Likely pathogenic	0.997	-3.781	Deleterious	Disease causing
		21	p.Ala1443Val	51	†	PM2 PM6 PP3 PP4	Likely pathogenic	0.997	-3.781	Deleterious	Disease causing
		22	p.Gly238Val	15	†	PS3 PM2 PP3 PP4	Likely pathogenic	1	-7.145	Deleterious	Disease causing
	COL1A2	23	c.1036-2A>C	19		PVS1 PS3	Pathogenic			1	Disease causing Most probably affecting splicing.
		24	p.Gly358Ser	20		PS1 PS3	Pathogenic	1	-5.059	Deleterious	Disease causing
		25	p.Gly460Ser	24		PS1 PS3 PM6	Pathogenic	1	-5.119	Deleterious	Disease causing
		26	p.Gly496Ser	25	†	PS1 PS3	Pathogenic	1	-5.420	Deleterious	Disease causing
		27	p.Gly529Asp	27		PS1 PS3	Pathogenic	1	-6.258	Deleterious	Disease causing
		28	p.586msAla	30	†	PM2 PM4 PM6 PP3	Likely pathogenic		-7.425	Deleterious	Disease causing
		29	p.Gly601Val	31		PS1 PS3	Pathogenic	1	-7.736	Deleterious	Disease causing
		30	p.Gly700Arg	35		PS1 PS3	Pathogenic	1	-5.389	Deleterious	Disease causing
		31	p.Gly703Val	35		PS1 PS3 PM6	Pathogenic	1	-8.124	Deleterious	Disease causing
		32	p.Gly739Arg	37		PS1 PS3	Pathogenic	1	-5.393	Deleterious	Disease causing
		33	p.Gly772Ser	38		PS1 PS3	Pathogenic	0.769	-5.427	Deleterious	Disease causing

Continues

TABLE 3 Continued

Group	Gene	Patient ID	Genotype	Exon(IVS) number	Novelty <sup>a</sup>	ACMG criteria	Class	PolyPhen-2	PROVEAN	Mutation Taster	Human splicing finder
		34	p.Gly892Asp	42		PS1 PS3	Pathogenic	1	-5.979	Deleterious	Disease causing
		35	p.Gly931Arg	43		PS1 PS3 PM6	Pathogenic	1	-5.342	Deleterious	Disease causing
		36	p.Gly1012Ser	46		PS1 PS3	Pathogenic	1	-5.359	Deleterious	Disease causing
		37	p.Gly1012Ser	46		PS1 PS3	Pathogenic	1	-5.359	Deleterious	Disease causing
		38	p.Gly1012Cys	46	†	PS3 PM2 PM5 PM6 PP3 PP4	Pathogenic	1	-7.910	Deleterious	Disease causing
		39	p.Gly1087Val	48	†	PS1 PS3	Pathogenic	1	-8.054	Deleterious	Disease causing
		40	p.Gly1093Arg	49	†	PS1 PS3	Pathogenic	1	-7.162	Deleterious	Disease causing
		41	p.Gly1102Val	49		PS1 PS3 PM6	Pathogenic	1	-7.409	Deleterious	Disease causing
OI type 5	IFITM5	1	c.-14C>T								

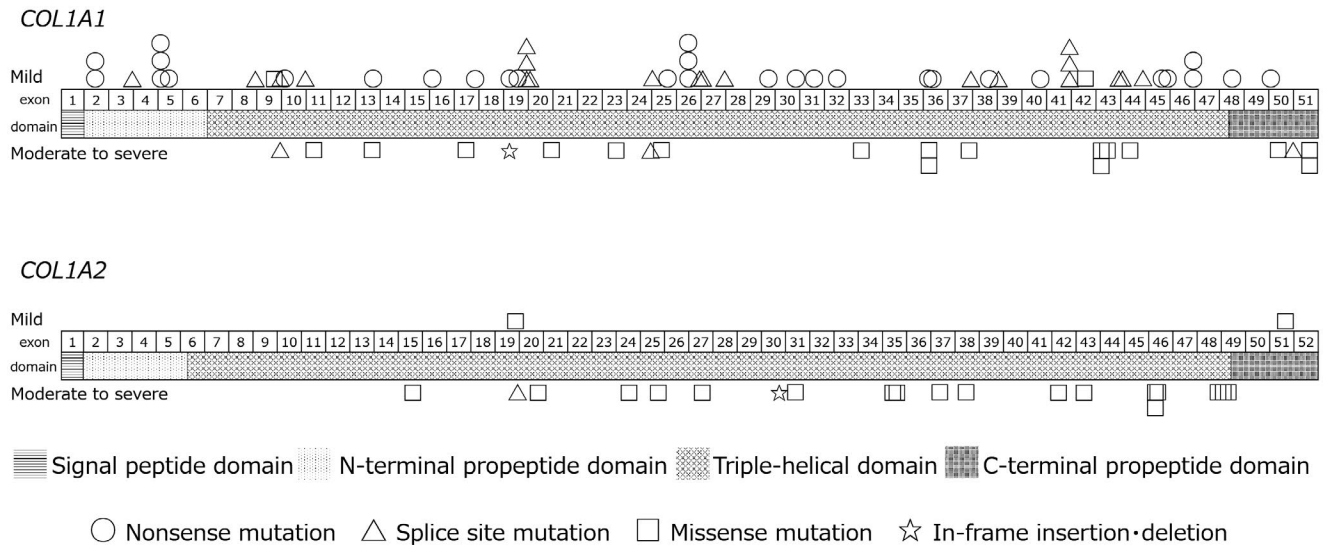
Abbreviations: ACMG, The American College of Medical Genetics and Genomics; N/A, not available; VUS, variants of uncertain significance.

<sup>a</sup>Novel variant unreported in the collagen type I variant database (<http://www.le.ac.uk/ge/collagen/>) is marked with a dagger (†).

(IVS9 -1G>A), c.1668+1G>A (IVS24 +1G>A), and c.4248+1G>A (IVS50 +1G>A). Triple-helical domain glycine substitutions were found in 32 cases. *COL1A1* C-terminal propeptide missense variants were present in three cases, and in-frame insertion or deletion within the triple-helical domains was found in two. The *COL1A1* C-terminal propeptide variant c.4328C>T (p.Ala1443Val) has previously been deposited as a VUS(rs1131692326). Its allele frequency has not been reported, but it has recently been cited as the causative variant for OI type 3 (Li, et al., 2019). Glycine-to-serine substitutions in the triple-helical domain occurred at the highest frequency (*COL1A1*, n = 11; *COL1A2*, n = 6). Substitutions to branched or charged amino acids (valine, aspartic acid, and arginine) were found at the N-terminal portion of *COL1A1* (n = 2), whereas such variants were scattered throughout *COL1A2* (n = 12). Taken as a whole, the variants causing moderate-to-severe OI were skewed toward the C-terminal of *COL1A1* and *COL1A2* (Figure 1).

## 4 | DISCUSSION

The present study showed genotypic and phenotypic correlations among non-consanguineous Japanese OI patients. To the best of our knowledge, our study population constitutes one of the largest Japanese OI populations assessed to date. Sanger sequencing identified type I collagen variants in 99% of the individuals tested. The detection rate for type I collagen mutation ranges from 60% to 100% in various OI populations (Ho Duy et al., 2016; Lin et al., 2015; Lindahl et al., 2015; Mohd Nawawi et al., 2018). Bardai et al. have reported 598 individuals with a typical OI phenotype (mild, moderate-to-severe, and type 5 in 43%, 52%, and 5%, respectively), and all the patients that were classified as mild OI had *COL1A1* or *COL1A2* variants, whereas only 85% did in the moderate-to-severe OI group (Bardai et al., 2016). Recessive OI usually manifests the more severe phenotype. Therefore, the detection rate may be affected by the ethnicity and consanguinity of the study population, and the disease severity (Fernandes et al., 2020; Mrosk et al., 2018). Ohata et al., (2019) have conducted comprehensive genetic analyses through targeted next-generation sequencing in 53 Japanese OI patients but only detected variants in *COL1A1*, *COL1A2*, and *IFITM5*. In fact, autosomal recessive diseases are very rare in Japan (e.g., phenylketonuria has a rate of 1:125,000, and cystic fibrosis a rate of 1:350,000), so recessive OI patients are scarcely reported (Aoki & Wada, 1988; Takeyari et al., 2018; Yamashiro et al., 1997). We believe that Sanger sequencing may still be applicable in the genophenotypic analysis of non-consanguineous OI populations (Mrosk et al., 2018). Moreover, our detection rate in the present study was superior to that of the previous one (Kataoka et al., 2007) because, in the present study, OI diagnosis was made by a clinician



**FIGURE 1** Variant spectra of *COL1A1* and *COL1A2*. Symbols above the box represent the variants in the mild OI group. Symbols below the box represent the variants in the moderate-to-severe OI group. Aligned symbols represent the same variant

familiar with OI, and DHPLC screening was omitted in case of false negatives (Phadke, 2015; Stephen et al., 2014). One proband presenting with the specific features of OI type 5 harbored the characteristic c.-14C>T variant in *IFITM5*. Whereas other *IFITM5* variants have been reported in some OI patients, a distinct phenotype of OI type 5 is exclusively observed in patients with this variant (Mohd Nawawi et al., 2018; Rodriguez Celin et al., 2018).

Blue sclera occurred more frequently in the mild OI group than the moderate-to-severe group. There was no significant difference between the two groups in terms of DI incidence. *COL1A1* splice-site or nonsense variants were the most closely correlated with the blue sclera, whereas there was no association between this genotype and DI. The latter results could be explained by the relative lack of information on the dental status of the test population because its members were comparatively young. Approximately 90% of the OI type 1 probands had blue sclera, and ~70% of the OI type 3 or 4 probands manifested this trait; whereas ~10% of OI type 1 had DI and ~60% of OI type 3 and 4 cases presented with the dental aberrations (Bardai et al., 2016; Lindahl et al., 2015; Patel et al., 2015). Hearing loss usually develops between the second and fourth decades of OI patients. Nevertheless, the relationship between this symptom and the molecular data has not been fully elucidated (Swinnen et al., 2011; Hald et al., 2018). In the present study, four individuals presented with hearing impairment in adolescence and young adulthood, but the number of cases was insufficient for the assessment of genotypic associations.

Glycine is the only residue small enough to fit into the sterically restricted space at the helical center. Most of the glycine substitutions produced moderate-to-severe phenotypes, but some resulted in the mild form. Our results corroborate

those previously reported (Lindahl et al., 2015; Rauch et al., 2010; Zhytnik et al., 2017). Lindahl et al. have reported that 32% of the type 1 OI cases are caused by qualitative variants in *COL1A1* and *COL1A2*. Phenotypes resulting from *COL1A1* missense variants may be more severe than those caused by *COL1A2* variants because 75% of the procollagen molecules in the heterozygotes of *COL1A1* mutants are expected to have  $\geq 1$  mutant pro- $\alpha 1(I)$  chain. In contrast, in the case of *COL1A2* variants, only 50% of the molecules presumably contain the mutant pro- $\alpha 2(I)$  chain (Brodsky & Persikov, 2014). Glycine substitutions to branched or charged amino acids are highly disruptive to helix stability and are mainly confined to the region near the *N*-terminal of *COL1A1*. On the other hand, they are observed throughout *COL1A2* (Marini et al., 2007; Rauch et al., 2010). These characteristics are consistent with our findings. In contrast, substitutions by small amino acids (cysteine, alanine, and serine) produce variable outcomes. For example, the variant c.3505G>A (p.Gly1169Ser) in *COL1A1* exon 47 is reported seventeen times in the OI variant database, and four of these are described as OI type 1. Familial cases of this variant present with significant phenotype diversity, ranging from mild to severe (Liu et al., 2016). A recent study has reported that familial cases with haploinsufficiency have lower phenotypic variability, whereas those with structural abnormality are more likely to show higher phenotypic variability (Zhytnik et al., 2020). Our familial cases also showed a similar tendency; this may reflect the fact that the majority of patients exhibited a mild phenotype. The effects of genetic, epigenetic, environmental, or other unidentified factors on the same change and the corresponding variability in its clinical severity remain unknown. Several dozens in-frame insertions or deletions in the Gly-X-Y tripeptide repeat region are reported

in the OI variant database, most of which are tripeptide or any multiple of three amino acids. Duplication or deletion of one or two Gly-X-Y triplets shift the register of collagen chains and prevent the incorporation of the mutant chains into the collagen trimer, leading to lethal or severe OI (Cabral et al., 2003). All but one of single or double amino acid insertion or deletion also show moderate-to-severe phenotypes, similar to our findings.

Splice-site variants that cause exon skipping within the triple-helical domain can maintain the reading frame and lead to shifted alignment, impaired triple helix structures, and severe phenotypes (Marini et al., 2007). Conversely, variants resulting from intron retention or cryptic-site activation may cause premature termination codons and produce milder phenotypes. In a study on *COL1A1* splice variants, all individuals with IVS(X)-1G>A acceptor site transitions showed the OI type 1 phenotype (Schleit et al., 2015). Guanine is the first nucleotide in most *COL1A1* exons and particularly in the triple-helical domains. This transition creates a new splice acceptor 1 nt downstream and produces a frameshift and a mild OI phenotype (Byers, 2014). This hypothesis may plausibly predict the effects of splice-acceptor-site variants. However, we found the *COL1A1* splice-site variant c.697-1G>A (IVS9 -1G>A) in an individual with bone deformities. Furthermore, certain IVS(X)-1G>A acceptor-site variants are described as type 4 in the OI-variant database. On the other hand, splice-donor-site variants may result in different, less predictable, OI severities as well.

The C-terminal propeptide domains of procollagen are essential for the folding of the three pro $\alpha$ (I)-chains and their secretion from the rough ER (Barnes et al., 2019; Doan et al., 2020). The crystalline structure of the C-terminal propeptide trimer resembles a flower and has a stalk, base, and petal region. It harbors a conserved amino acid sequence (Malfait et al., 2014; Sharma et al., 2017). Symoens et al. have reported 30 unique C-terminal propeptide defects (Symoens et al., 2014). The missense variants in *COL1A1* may induce a more severe OI phenotype than those in *COL1A2*, which would be consistent with the results of our study. The *COL1A2* c.3883C>T (p.Ser1295Pro, rs757449082) variant was classified as VUS, which has two interpretations (either likely benign with osteogenesis imperfecta or benign with Ehlers-Danlos Syndrome Arthrochalasia Type 2). However, we think that this variant could cause a mild OI phenotype. Furthermore, all three probands with this type of variant (moderate-to-severe group, Patients IDs 18, 20, and 21) had normal sclera. When other study results are also considered, only 6/19 (32%) of such patients present with the blue sclera (Barnes et al., 2019; Li, Mao, et al., 2019; Lu et al., 2014; Symoens et al., 2014). Although the bluish color of the sclera may fade with age in moderate-to-severe OI patients (Sillence et al., 1993), there may be a correlation between

*COL1A1* C-terminal propeptide missense variants and normal sclera.

The present study had several limitations. First, most of the *COL1A1* and *COL1A2* variants in this study population were probably skewed toward the mild phenotype. Second, our method may have overlooked monoallelic, biallelic, or digenic causative variants; several studies have reported patients with double pathogenic variants (Ackermann & Levine, 2017; Ho Duy et al., 2016; Mohd Nawawi et al., 2018; Mrosk et al., 2018; Takagi et al., 2015). Third, we did not perform functional analyses on the proteins, mRNAs, or cDNAs isolated from cultured fibroblasts. Such assays detect quantitative and/or qualitative defects and may help elucidate variants within the clinical spectrum (Li et al., 2019; Van Dijk et al., 2012).

The present study described the variant spectra of *COL1A1*, *COL1A2*, and *IFITM5* among 96 OI probands, thereby elucidating the genotypic and phenotypic correlations in OI. This sample population constitutes one of the largest ones analyzed in Japan, so that our detection rate for type I collagen variants have improved relative to that of our previous report. Consequently, we found that C-terminal propeptide missense variants of the  $\alpha 1$  (I) chain may be related to the normal sclera.

## ACKNOWLEDGMENTS

The authors thank the patients and their family members who participated in this study. We also thank the institutions involved for their collaboration in the collection of the samples and clinical data. This study was supported in part by a Grant-in-Aid for Scientific Research (No. 23791177) from the Japan Society for the Promotion of Science, a Grant-in-Aid for Health Labor Sciences Research (No. 201128153B and 201324078B) from the Ministry of Health, Labor and Welfare of Japan, and a Grant-in-Aid for Practical Research Project for Rare/Intractable Diseases (No. 16ek0109135h0002) from the Japan Agency for Medical Research and Development.



## CONFLICTS OF INTEREST

The authors declare that they have no competing interests.

## AUTHOR CONTRIBUTIONS

KH and HTa designed this study. YH, KH, and MY performed the sequencing. YH, KH, and NF analyzed the data. YH drafted the manuscript. KH and NF helped draft the manuscript. HTa and HTs reviewed and finalized the manuscript. All the authors approved the final manuscript as submitted and agreed to be accountable for all the aspects of the work.

## ORCID

Yosuke Higuchi  <https://orcid.org/0000-0001-5253-6569>  
Kosei Hasegawa  <https://orcid.org/0000-0002-1751-6527>

## REFERENCES

- Ackermann, A. M., & Levine, M. A. (2017). Compound heterozygous mutations in COL1A1 associated with an atypical form of type I osteogenesis imperfecta. *American Journal of Medical Genetics Part A*, 173(7), 1907–1912. <https://doi.org/10.1002/ajmg.a.38238>
- Adzhubei, I. A., Schmidt, S., Peshkin, L., Ramensky, V. E., Gerasimova, A., Bork, P., Kondrashov, A. S., & Sunyaev, S. R. (2010). A method and server for predicting damaging missense mutations. *Nature Methods*, 7(4), 248–249. <https://doi.org/10.1038/nmeth0410-248>
- Aoki, K., & Wada, Y. (1988). Outcome of the patients detected by newborn screening in Japan. *Pediatrics International*, 30(4), 429–434. <https://doi.org/10.1111/j.1442-200X.1988.tb02533.x>
- Bardai, G., Moffatt, P., Glorieux, F. H., & Rauch, F. (2016). DNA sequence analysis in 598 individuals with a clinical diagnosis of osteogenesis imperfecta: diagnostic yield and mutation spectrum. *Osteoporosis International*, 27(12), 3607–3613. <https://doi.org/10.1007/s00198-016-3709-1>
- Barnes, A. M., Ashok, A., Makareeva, E. N., Brusel, M., Cabral, W. A., Weis, M. A., Moali, C., Bettler, E., Eyre, D. R., Cassella, J. P., Leikin, S., Hulmes, D. J. S., Kessler, E., & Marini, J. C. (2019). COL1A1 C-propeptide mutations cause ER mislocalization of procollagen and impair C-terminal procollagen processing. *Biochimica Et Biophysica Acta (BBA) - Molecular Basis of Disease*, 1865(9), 2210–2223. <https://doi.org/10.1016/j.bbadis.2019.04.018>
- Brodsky, B., & Persikov, A. (2014). Structural consequences of glycine missense mutations in osteogenesis imperfecta. In J. R. Shapiro, J. Kassim, & P. D. Sponseller (Eds.), *Osteogenesis Imperfecta* (Vol. 2, pp. 115–124). Elsevier. <https://doi.org/10.1016/B978-0-12-397165-4.00011-3>
- Byers, P. H. (2014). Haploinsufficiency for mutations in type I collagen genes: Mechanisms and clinical effects. In J. R. Shapiro, J. Kassim, & P. D. Sponseller (Eds.), *Osteogenesis Imperfecta* (pp. 125–127). Elsevier. <https://doi.org/10.1016/B978-0-12-397165-4.00012-5>
- Cabral, W. A., Merts, M. V., Makareeva, E., Colige, A., Tekin, M., Pandya, A., Leikin, S., & Marini, J. C. (2003). Type I collagen triplet duplication mutation in lethal osteogenesis imperfecta shifts register of  $\alpha$  chains throughout the Helix and Disrupts incorporation of mutant helices into fibrils and extracellular matrix. *Journal of Biological Chemistry*, 278(12), 10006–10012. <https://doi.org/10.1074/jbc.M212523200>
- Cho, T.-J., Lee, K.-E., Lee, S.-K., Song, S. J., Kim, K. J., Jeon, D., Lee, G., Kim, H.-N., Lee, H. R., Eom, H.-H., Lee, Z. H., Kim, O.-H., Park, W.-Y., Park, S. S., Ikegawa, S., Yoo, W. J., Choi, I. H., & Kim, J.-W. (2012). A single recurrent mutation in the 5'-UTR of IFITM5 causes osteogenesis imperfecta type V. *The American Journal of Human Genetics*, 91(2), 343–348. <https://doi.org/10.1016/j.ajhg.2012.06.005>
- Choi, Y., Sims, G. E., Murphy, S., Miller, J. R., & Chan, A. P. (2012). Predicting the functional effect of amino acid substitutions and indels. *PLoS One*, 7(10), e46688. <https://doi.org/10.1371/journal.pone.0046688>
- Desmet, F. O., Hamroun, D., Lalande, M., Collod-B eroud, G., Claustres, M., & B eroud, C. (2009). Human splicing finder: An online bioinformatics tool to predict splicing signals. *Nucleic Acids Research*, 37(9), 1–14. <https://doi.org/10.1093/nar/gkp215>
- Doan, N.-D., Hosseini, A. S., Bikovtseva, A. A., Huang, M. S., DiChiara, A. S., Papa, L. J., Koller, A., & Shoulders, M. D. (2020). Elucidation of proteostasis defects caused by osteogenesis imperfecta mutations in the collagen- $\alpha$ 2(I) C-propeptide domain. *The Journal of Biological Chemistry*, 295(29), 9959–9973. <https://doi.org/10.1074/jbc.RA120.014071>
- Etich, J., Le bmeier, L., Rehberg, M., Sill, H., Zaucke, F., Netzer, C., & Semler, O. (2020). Osteogenesis imperfecta—pathophysiology and therapeutic options. *Molecular and Cellular Pediatrics*, 7(1). <http://dx.doi.org/10.1186/s40348-020-00101-9>
- Fernandes, A. M., Rocha-Braz, M., Fran a, M. M., Lerario, A. M., Sim es, V., Zanardo, E. A., Kulikowski, L. D., Martin, R. M., Mendonca, B. B., & Ferraz-de-Souza, B. (2020). The molecular landscape of osteogenesis imperfecta in a Brazilian tertiary service cohort. *Osteoporosis International*, 31(7), 1341–1352. <https://doi.org/10.1007/s00198-020-05366-4>
- Glorieux, F. H., Rauch, F., Plotkin, H., Ward, L., Travers, R., Roughley, P., Lalic, L., Glorieux, D. F., Fassier, F., & Bishop, N. J. (2000). Type V osteogenesis imperfecta: A new form of brittle bone disease. *Journal of Bone and Mineral Research*, 15(9), 1650–1658. <https://doi.org/10.1359/jbmr.2000.15.9.1650>
- Hald, J. D., Folkestad, L., Swan, C. Z., Wanscher, J., Schmidt, M., G jrup, H., Haubek, D., Leonhard, C.-H., Larsen, D. A., Hjortdal, J.  ., Harsl f, T., Duno, M., Lund, A. M., Jensen, J.-E., Brixen, K., & Langdahl, B. (2018). Osteogenesis imperfecta and the teeth, eyes, and ears—A study of non-skeletal phenotypes in adults. *Osteoporosis International*, 29(12), 2781–2789. <https://doi.org/10.1007/s00198-018-4663-x>
- Ho Duy, B., Zhytnik, L., Maasalu, K., K ndla, I., Prans, E., Reimann, E., M rtson, A., & K ks, S. (2016). Mutation analysis of the COL1A1 and COL1A2 genes in Vietnamese patients with osteogenesis imperfecta. *Human Genomics*, 10(1), 27. <https://doi.org/10.1186/s40246-016-0083-1>
- Kanno, J., Saito-Hakoda, A., Kure, S., & Fujiwara, I. (2018). Responsiveness to pamidronate treatment is not related to the genotype of type I collagen in patients with osteogenesis imperfecta. *Journal of Bone and Mineral Metabolism*, 36(3), 344–351. <https://doi.org/10.1007/s00774-017-0840-9>
- Kataoka, K., Ogura, E., Hasegawa, K., Inoue, M. A., Yoshiki, S., Morishima, T., & Tanaka, H. (2007). Mutations in type I collagen genes in Japanese osteogenesis imperfecta patients. *Pediatrics International*, 49(5), 564–569. <https://doi.org/10.1111/j.1442-200X.2007.02422.x>
- K rkk , J., Ala-Kokko, L., De Paepe, A., Nuytinck, L., Earley, J., & Prockop, D. J. (1998). Analysis of the COL1A1 and COL1A2 genes by PCR amplification and scanning by conformation-sensitive gel electrophoresis identifies only COL1A1 mutations in 15 patients with osteogenesis imperfecta type I: Identification of common sequences of null-allele. *The American Journal of Human Genetics*, 62(1), 98–110. <https://doi.org/10.1086/301689>
- Li, L., Cao, Y., Zhao, F., Mao, B., Ren, X., Wang, Y., Guan, Y., You, Y. I., Li, S., Yang, T., & Zhao, X. (2019). Validation and classification of atypical splicing variants associated with osteogenesis imperfecta. *Frontiers in Genetics*, 10(OCT), 1–12. <https://doi.org/10.3389/fgene.2019.00979>
- Li, L.-J., Lyu, F., Song, Y.-W., Wang, O. U., Jiang, Y., Xia, W.-B., Xing, X.-P., & Li, M. (2019). Genotype-phenotype relationship in a large cohort of osteogenesis imperfecta patients with COL1A1 mutations revealed by a new scoring system. *Chinese Medical Journal*, 132(2), 145–153. <https://doi.org/10.1097/CM9.00000000000013>
- Li, L., Mao, B., Li, S., Xiao, J., Wang, H., Zhang, J., Ren, X., Wang, Y., Wu, Y., Cao, Y., Lu, C., Gao, J., You, Y. I., Zhao, F., Geng, X., Xiao, Y., Jiang, C., Ye, Y., Yang, T., ... Zhang, X. (2019). Genotypic and phenotypic characterization of Chinese patients

- with osteogenesis imperfecta. *Human Mutation*, 40(5), 588–600. <https://doi.org/10.1002/humu.23718>
- Lin, H.-Y., Chuang, C.-K., Su, Y.-N., Chen, M.-R., Chiu, H.-C., Niu, D.-M., & Lin, S.-P. (2015). Genotype and phenotype analysis of Taiwanese patients with osteogenesis imperfecta. *Orphanet Journal of Rare Diseases*, 10(1), 152. <https://doi.org/10.1186/s13023-015-0370-2>
- Lindahl, K., Åström, E., Rubin, C.-J., Grigelioniene, G., Malmgren, B., Ljunggren, Ö., & Kindmark, A. (2015). Genetic epidemiology, prevalence, and genotype–phenotype correlations in the Swedish population with osteogenesis imperfecta. *European Journal of Human Genetics*, 23(8), 1042–1050. <https://doi.org/10.1038/ejhg.2015.81>
- Liu, H.-Y., Huang, J., Wu, D., Li, T., Guo, L.-J., Guo, Q.-N., Wang, H.-D., Wang, R.-L., & Wang, Y. (2016). Collagen type I alpha 1 mutation causes osteogenesis imperfecta from mild to perinatal death in a Chinese family. *Chinese Medical Journal*, 129(1), 88–91. <https://doi.org/10.4103/0366-6999.172600>
- Liu, Y., Asan, Ma, D., Lv, F., Xu, X., Wang, J., Xia, W., Jiang, Y., Wang, O., Xing, X., Yu, W., Wang, J., Sun, J., Song, L., Zhu, Y., Yang, H., Wang, J., & Li, M. (2017). Gene mutation spectrum and genotype-phenotype correlation in a cohort of Chinese osteogenesis imperfecta patients revealed by targeted next generation sequencing. *Osteoporosis International*, 28(10), 2985–2995. <https://doi.org/10.1007/s00198-017-4143-8>
- Lu, Y., Ren, X., Wang, Y., Li, T., Li, F., Wang, S., Xu, C, Wu, G., Li, H., Li, G., Zhao, F., Wang, Z., Mo, X., & Han, J. (2014). Mutational and structural characteristics of four novel heterozygous C-propeptide mutations in the pro $\alpha$ 1(I) collagen gene in Chinese osteogenesis imperfecta patients. *Clinical Endocrinology*, 80(4), 524–531. <http://dx.doi.org/10.1111/cen.12354>
- Malfait, F., Symoens, S., & De Paepe, A. (2014). Sequence alterations in the carboxyl-terminal propeptide domain. In J. R. Shapiro, J. Kassim & P. D. Sponseller (Eds.), *Osteogenesis Imperfecta* (pp. 129–140). Elsevier. <https://doi.org/10.1016/B978-0-12-397165-4.00013-7>
- Marini, J. C., Forlino, A., Bächinger, H. P., Bishop, N. J., Byers, P. H., Paepe, A. D., Fassier, F., Fratzl-Zelman, N., Kozloff, K. M., Krakow, D., Montpetit, K., & Semler, O. (2017). Osteogenesis imperfecta. *Nature Reviews. Disease Primers*, 3(1), 17052. <https://doi.org/10.1038/nrdp.2017.52>
- Marini, J. C., Forlino, A., Cabral, W. A., Barnes, A. M., San Antonio, J. D., Milgrom, S., Hyland, J. C., Körkkö, J., Prockop, D. J., De Paepe, A., Coucke, P., Symoens, S., Glorieux, F. H., Roughley, P. J., Lund, A. M., Kaurila-Svahn, K., Hartikka, H., Cohn, D. H., Krakow, D., ... Byers, P. H. (2007). Consortium for osteogenesis imperfecta mutations in the helical domain of type I collagen: regions rich in lethal mutations align with collagen binding sites for integrins and proteoglycans. *Human Mutation*, 28(3), 209–221. <https://doi.org/10.1002/humu.20429>
- Mohd Nawawi, N., Selveindran, N. M., Rasat, R., Chow, Y. P., Abdul Latiff, Z., Syed Zakaria, S. Z., Jamal, R., Abdul Murad, N. A., & Abd Aziz, B. B. (2018). Genotype-phenotype correlation among Malaysian patients with osteogenesis imperfecta. *Clinica Chimica Acta*, 484(May), 141–147. <https://doi.org/10.1016/j.cca.2018.05.048>
- Mortier, G. R., Cohn, D. H., Cormier-Daire, V., Hall, C., Krakow, D., Mundlos, S., Nishimura, G., Robertson, S., Sangiorgi, L., Savarirayan, R., Sillence, D., Superti-Furga, A., Unger, S., & Warman, M. L. (2019). Nosology and classification of genetic skeletal disorders: 2019 revision. *American Journal of Medical Genetics Part A*, 179(12), 2393–2419. <https://doi.org/10.1002/ajmg.a.61366>
- Mrosk, J., Bhavani, G. S. L., Shah, H., Hecht, J., Krüger, U., Shukla, A., Kornak, U., & Girisha, K. M. (2018). Diagnostic strategies and genotype-phenotype correlation in a large Indian cohort of osteogenesis imperfecta. *Bone*, 110, 368–377. <https://doi.org/10.1016/j.bone.2018.02.029>
- Ohata, Y., Takeyari, S., Nakano, Y., Kitaoka, T., Nakayama, H., Bizaoui, V., Yamamoto, K., Miyata, K., Yamamoto, K., Fujiwara, M., Kubota, T., Michigami, T., Yamamoto, K., Yamamoto, T., Namba, N., Ebina, K., Yoshikawa, H., & Ozono, K. (2019). Comprehensive genetic analyses using targeted next-generation sequencing and genotype-phenotype correlations in 53 Japanese patients with osteogenesis imperfecta. *Osteoporosis International*, 30(11), 2333–2342. <https://doi.org/10.1007/s00198-019-05076-6>
- Patel, R. M., Nagamani, S. C., Cuthbertson, D., Campeau, P. M., Krischer, J. P., Shapiro, J. R., Steiner, R. D., Smith, P. A., Bober, M. B., Byers, P. H., & Pepin, M. (2015). A cross-sectional multicenter study of osteogenesis imperfecta in North America - Results from the linked clinical research centers. *Clinical Genetics*, 87(2), 133–140. <https://doi.org/10.1111/cge.12409>
- Phadke, S. R. (2015). Mutation spectrum of COL1A1 and COL1A2 genes in Indian patients with osteogenesis imperfecta. *American Journal of Medical Genetics Part A*, 167(11), 2868. <https://doi.org/10.1002/ajmg.a.37272>
- Rauch, F., Lalic, L., Roughley, P., & Glorieux, F. H. (2010). Genotype–phenotype correlations in nonlethal osteogenesis imperfecta caused by mutations in the helical domain of collagen type I. *European Journal of Human Genetics*, 18(6), 642–647. <https://doi.org/10.1038/ejhg.2009.242>
- Richards, S., Aziz, N., Bale, S., Bick, D., Das, S., Gastier-Foster, J., Grody, W. W., Hegde, M., Lyon, E., Spector, E., Voelkerding, K., & Rehm, H. L. (2015). Standards and guidelines for the interpretation of sequence variants: a joint consensus recommendation of the American College of Medical Genetics and Genomics and the Association for Molecular Pathology. *Genetics in Medicine*, 17(5), 405–423. <https://doi.org/10.1038/gim.2015.30>
- Rodriguez Celin, M., Moosa, S., & Fano, V. (2018). Uncommon IFITM5 mutation associated with severe skeletal deformity in osteogenesis imperfecta. *Annals of Human Genetics*, 82(6), 477–481. <https://doi.org/10.1111/ahg.12275>
- Schleit, J., Bailey, S. S., Tran, T., Chen, D., Stowers, S., Schwarze, U., & Byers, P. H. (2015a). Molecular outcome, prediction, and clinical consequences of splice variants in COL1A1, which encodes the pro $\alpha$ 1(I) chains of type I procollagen. *Human Mutation*, 36(7), 728–739. <https://doi.org/10.1002/humu.22812>
- Schwarz, J. M., Rödelberger, C., Schuelke M., & Seelow D. (2010). MutationTaster evaluates disease-causing potential of sequence alterations. *Nature Methods*, 7(8), 575–576. <http://dx.doi.org/10.1038/nmeth0810-575>
- Semler, O., Garbes, L., Keupp, K., Swan, D., Zimmermann, K., Becker, J., Iden, S., Wirth, B., Eysel, P., Koerber, F., Schoenau, E., Bohlander, S. K., Wollnik, B., & Netzer, C. (2012). A mutation in the 5′-UTR of IFITM5 creates an in-frame start codon and causes autosomal-dominant osteogenesis imperfecta type V with hyperplastic callus. *The American Journal of Human Genetics*, 91(2), 349–357. <https://doi.org/10.1016/j.ajhg.2012.06.011>
- Sharma, U., Carrique, L., Vadon-Le Goff, S., Mariano, N., Georges, R.-N., Delolme, F., Koivunen, P., Myllyharju, J., Moali, C., Aghajari,



- N., & Hulmes, D. J. S. (2017). Structural basis of homo- and heterotrimerization of collagen I. *Nature Communications*, 8(1), 14671. <https://doi.org/10.1038/ncomms14671>
- Sillence, D., Butler, B., Latham, M., & Barlow, K. (1993). Natural history of blue sclerae in osteogenesis imperfecta. *American Journal of Medical Genetics*, 45(2), 183–186. <https://doi.org/10.1002/ajmg.1320450207>
- Sillence, D. O., Senn, A., & Danks, D. M. (1979). Genetic heterogeneity in osteogenesis imperfecta. *Journal of Medical Genetics*, 16(2), 101–116. <https://doi.org/10.1136/jmg.16.2.101>
- Stephen, J., Shukla, A., Dalal, A., Girisha, K. M., Shah, H., Gupta, N., Kabra, M., Dabadhghao, P., & Phadke, S. R. (2014). Mutation spectrum of COL1A1 and COL1A2 genes in Indian patients with osteogenesis imperfecta. *American Journal of Medical Genetics Part A*, 164(6), 1482–1489. <https://doi.org/10.1002/ajmg.a.36481>
- Swinnen, F. K. R., Coucke, P. J., De Paepe, A. M., Symoens, S., Malfait, F., Gentile, F. V., Sangiorgi, L., D'Eufemia, P., Celli, M., Garretsen, T. J. T. M., Cremers, C. W. R. J., Dhooze, I. J. M., & De Leenheer, E. M. R. (2011). Osteogenesis imperfecta: the audiological phenotype lacks correlation with the genotype. *Orphanet Journal of Rare Diseases*, 6(1), 88. <https://doi.org/10.1186/1750-1172-6-88>
- Symoens, S., Hulmes, D. J. S., Bourhis, J.-M., Coucke, P. J., De Paepe, A., & Malfait, F. (2014). Type I procollagen C-propeptide defects: Study of genotype-phenotype correlation and predictive role of crystal structure. *Human Mutation*, 35(11), 1330–1341. <https://doi.org/10.1002/humu.22677>
- Takagi, M., Shinohara, H., Narumi, S., Nishimura, G., Hasegawa, Y., & Hasegawa, T. (2015). Severe osteogenesis imperfecta caused by double glycine substitutions near the amino-terminal triple helical region in COL1A2. *American Journal of Medical Genetics Part A*, 167(7), 1627–1631. <https://doi.org/10.1002/ajmg.a.37051>
- Takeyari, S., Kubota, T., Miyata, K., Yamamoto, K., Nakayama, H., Yamamoto, K., Ohata, Y., Kitaoka, T., Yanagi, K., Kaname, T., & Ozono, K. (2018). Japanese patient with Cole-carpenter syndrome with compound heterozygous variants of SEC24D. *American Journal of Medical Genetics, Part A*, 176(12), 2882–2886. <https://doi.org/10.1002/ajmg.a.40643>
- van Dijk, F. S., Byers, P. H., Dalgleish, R., Malfait, F., Maugeri, A., Rohrbach, M., Symoens, S., Sistermans, E. A., & Pals, G. (2012). EMQN best practice guidelines for the laboratory diagnosis of osteogenesis imperfecta. *European Journal of Human Genetics*, 20(1), 11–19. <https://doi.org/10.1038/ejhg.2011.141>
- Van Dijk, F. S., & Sillence, D. O. (2014). Osteogenesis imperfecta: Clinical diagnosis, nomenclature and severity assessment. *American Journal of Medical Genetics Part A*, 164(6), 1470–1481. <https://doi.org/10.1002/ajmg.a.36545>
- Wasserstein, R. L., Schirm, A. L., & Lazar, N. A. (2019). Moving to a World Beyond “p < 0.05”. *American Statistician*, 73(sup1), 1–19. <https://doi.org/10.1080/00031305.2019.1583913>
- Yamashiro, Y., Shimizu, T., Oguchi, S., Shioya, T., Nagata, S., & Ohtsuka, Y. (1997). The estimated incidence of cystic fibrosis in Japan. *Journal of Pediatric Gastroenterology and Nutrition*, 24(5), 544–547. [https://journals.lww.com/jpgn/Fulltext/1997/05000/The\\_Estimated\\_Incidence\\_of\\_Cystic\\_Fibrosis\\_in.10.aspx](https://journals.lww.com/jpgn/Fulltext/1997/05000/The_Estimated_Incidence_of_Cystic_Fibrosis_in.10.aspx)
- Zhytnik, L., Maasalu, K., Reimand, T., Duy, B. H., Kõks, S., & Märtson, A. (2020). Inter- and intrafamilial phenotypic variability in individuals with collagen-related Osteogenesis Imperfecta. *Clinical and Translational Science*, 13(5), 960–971. <https://doi.org/10.1111/cts.12783>
- Zhytnik, L., Maasalu, K., Reimann, E., Prans, E., Kõks, S., & Märtson, A. (2017). Mutational analysis of COL1A1 and COL1A2 genes among Estonian osteogenesis imperfecta patients. *Human Genomics*, 11(1), 19. <https://doi.org/10.1186/s40246-017-0115-5>

## SUPPORTING INFORMATION

Additional Supporting Information may be found online in the Supporting Information section.

**How to cite this article:** Higuchi Y, Hasegawa K, Futagawa N, Yamashita M, Tanaka H, Tsukahara H. Genetic analysis in Japanese patients with osteogenesis imperfecta: Genotype and phenotype spectra in 96 probands. *Mol Genet Genomic Med*. 2021;9:e1675. <https://doi.org/10.1002/mgg3.1675>