

C

PG1: AGAGCTTTCAATGAAAAGTAACATAATTGCTCATTTCACCAGGCCCCCGGCT...

OCT4: AGAGGGGTTGAGTAGTCCCTTCGCAAGCCCTCATTTCACCAGGCCCCCGGCT...

SetA1-F →

Suo ----->

Liedtke ----->

Figure 1.

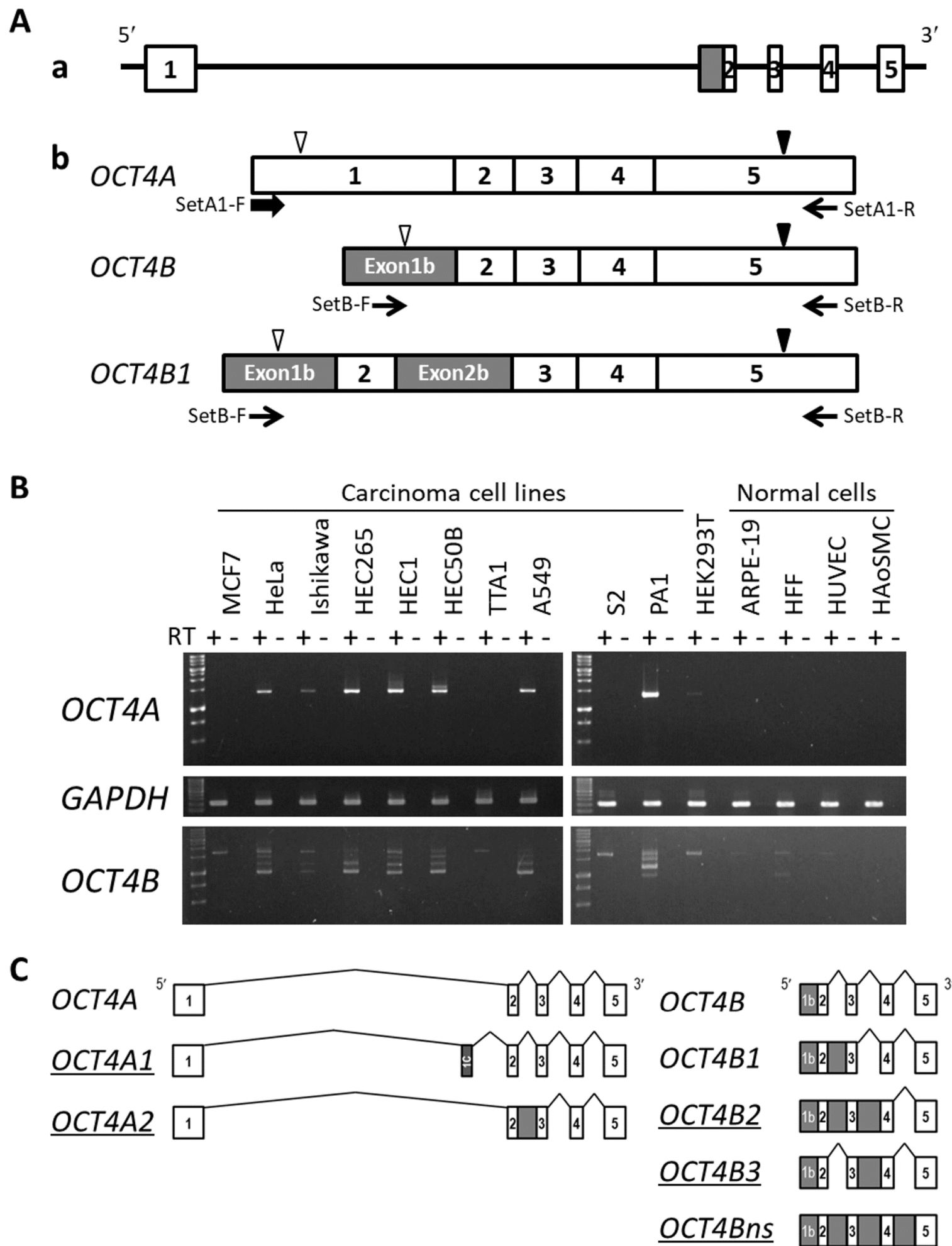


Figure 2.

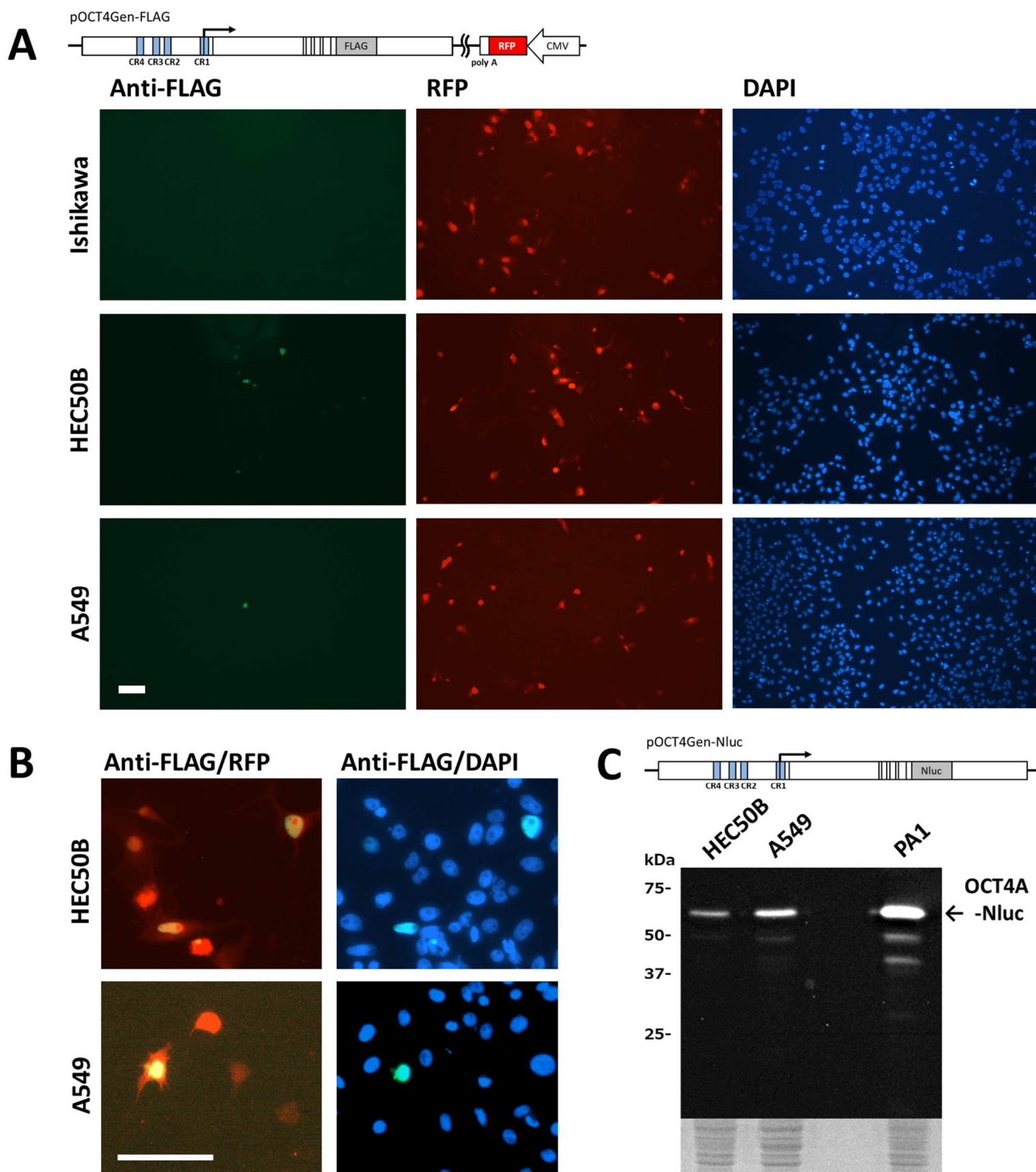


Figure 3.

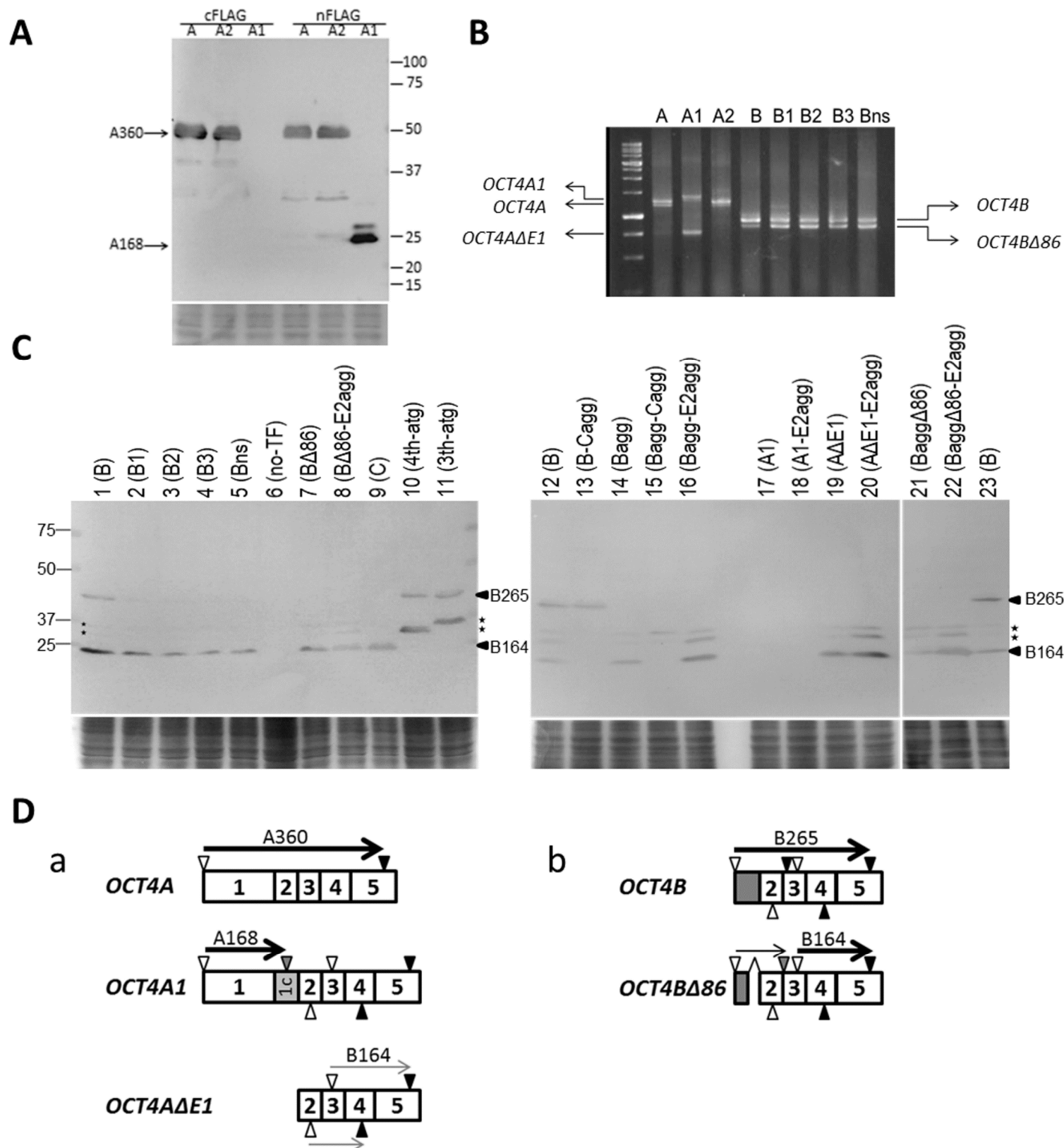


Figure 4.

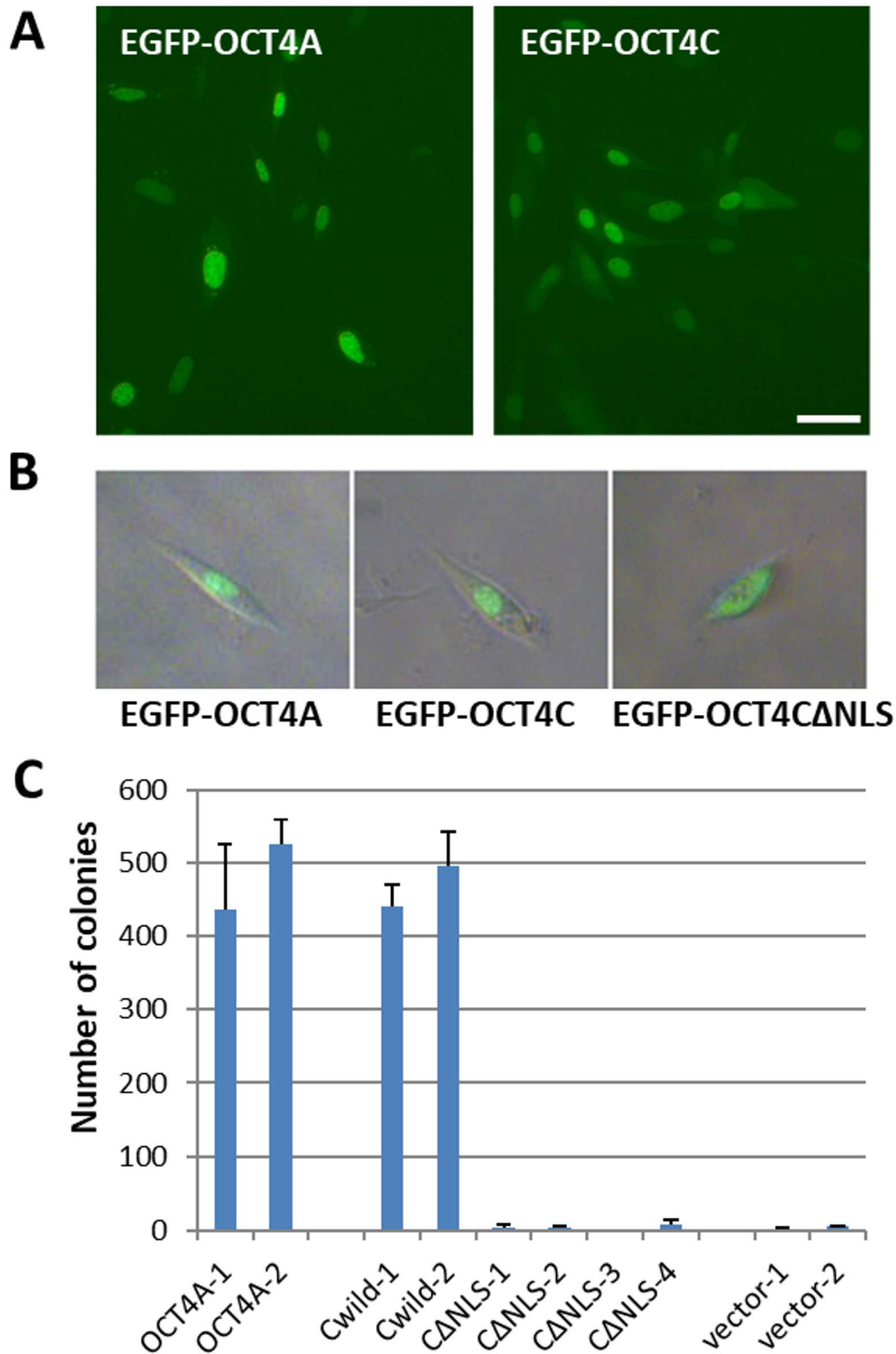
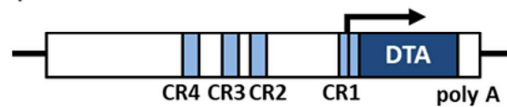


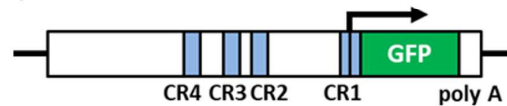
Figure 5.

A

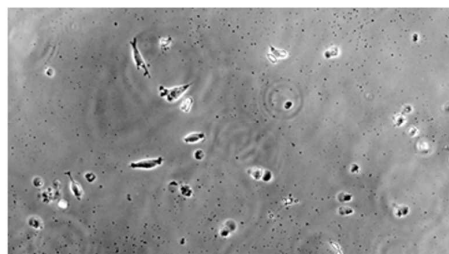
pOCT4-DTA



pOCT4-GFP



PA1



HEC50B

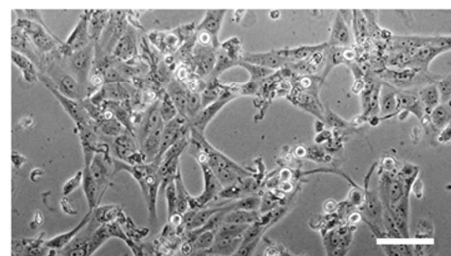
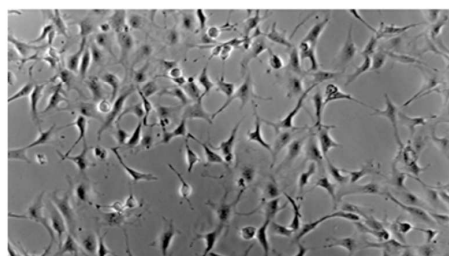
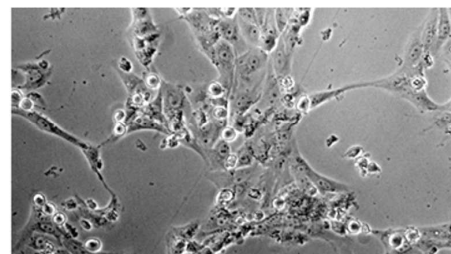
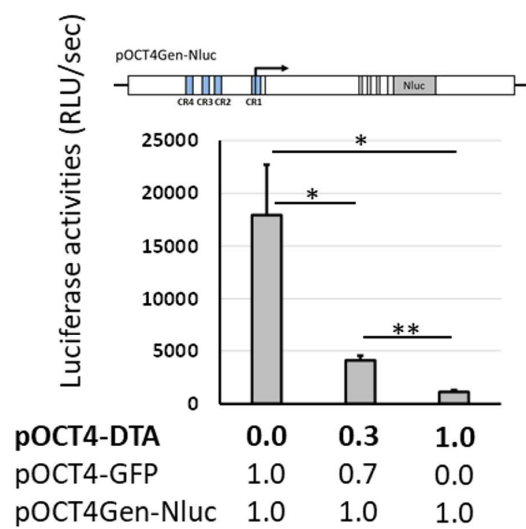
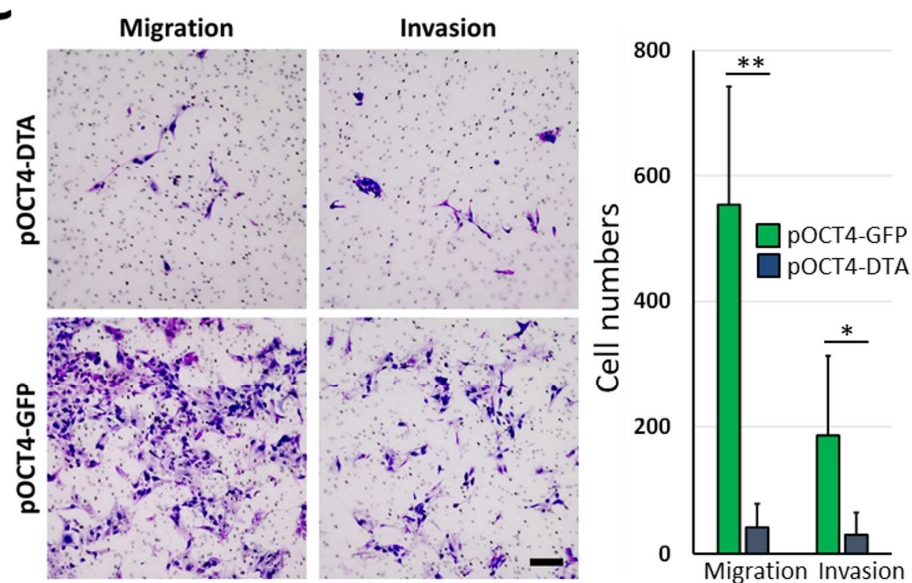
**B****C**

Figure 6.