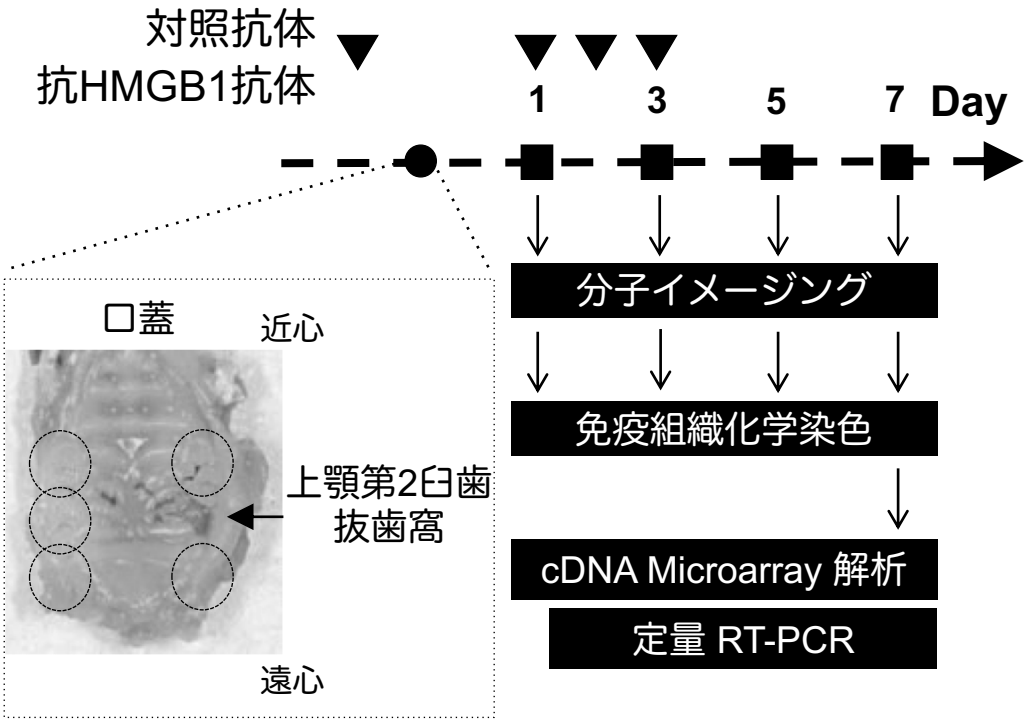


▼ : 各抗体投与 ● : 抜歯 ■ : サンプル回収

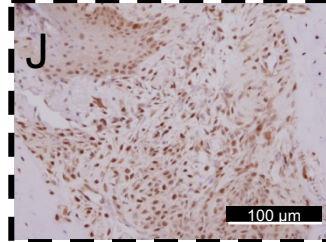
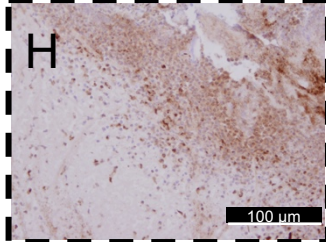
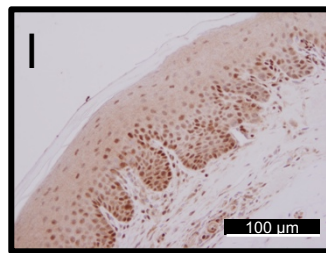
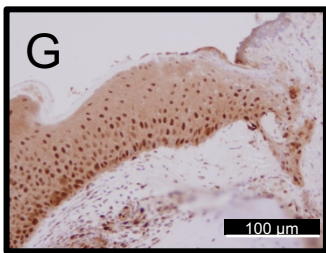
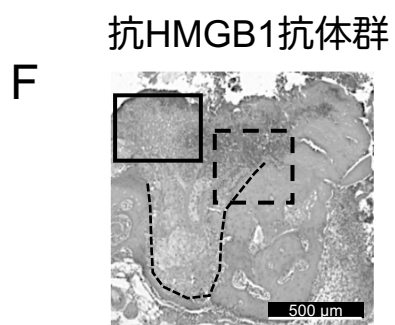
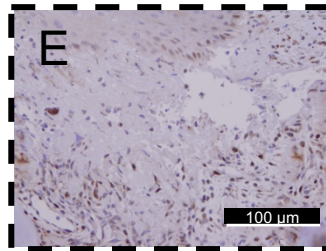
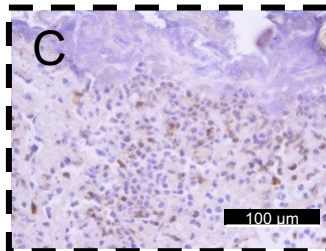
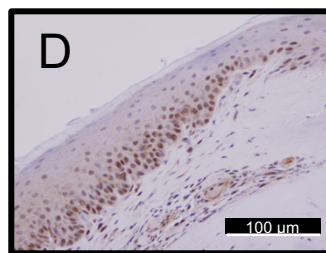
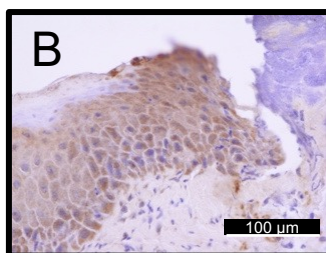
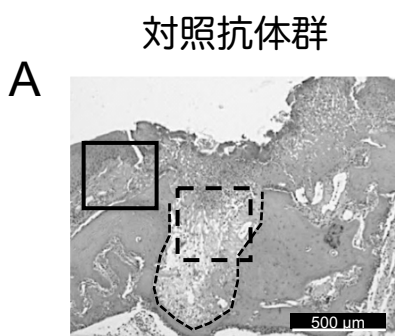


HE染色

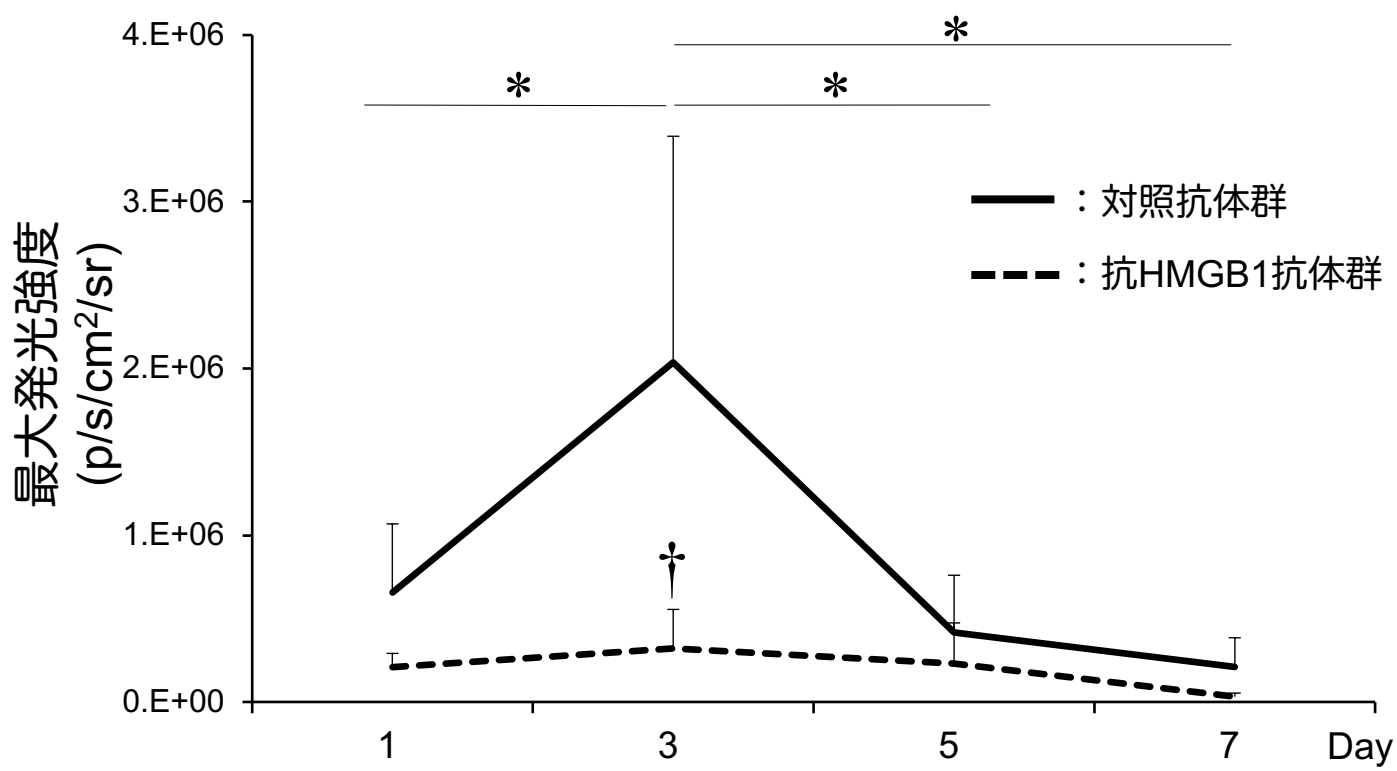
免疫化学染色

抜歯後1日目

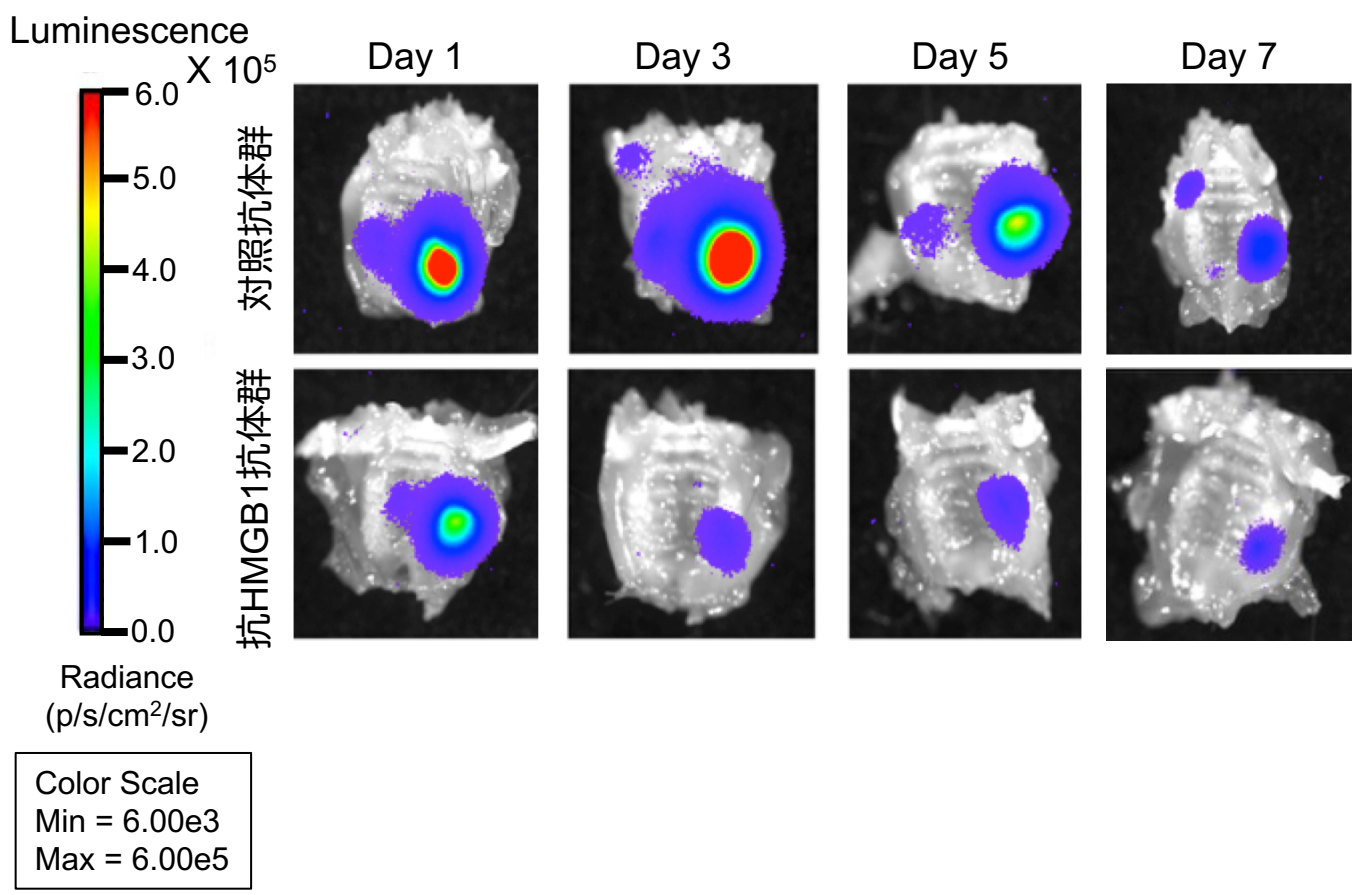
抜歯後3日目



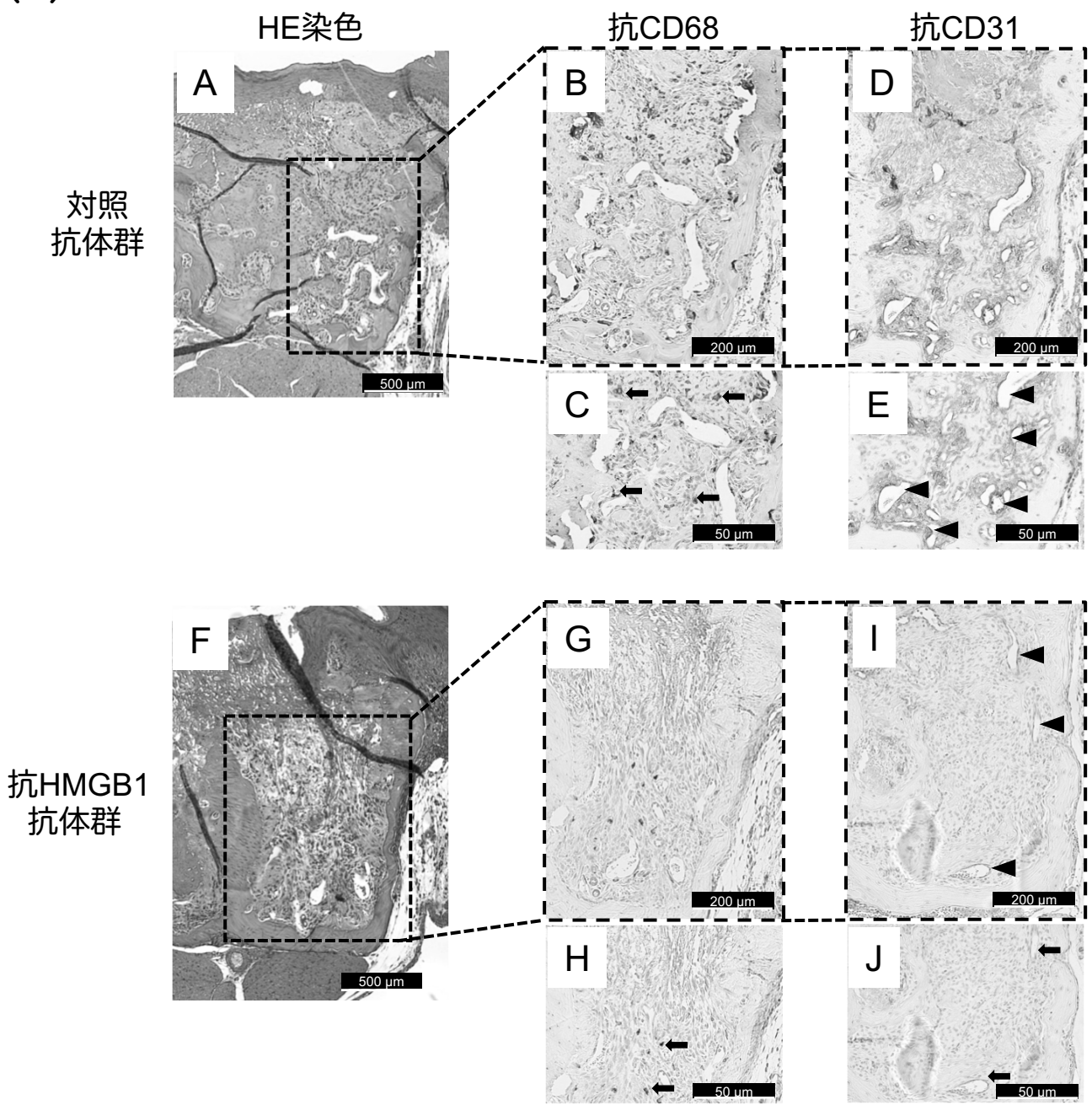
A



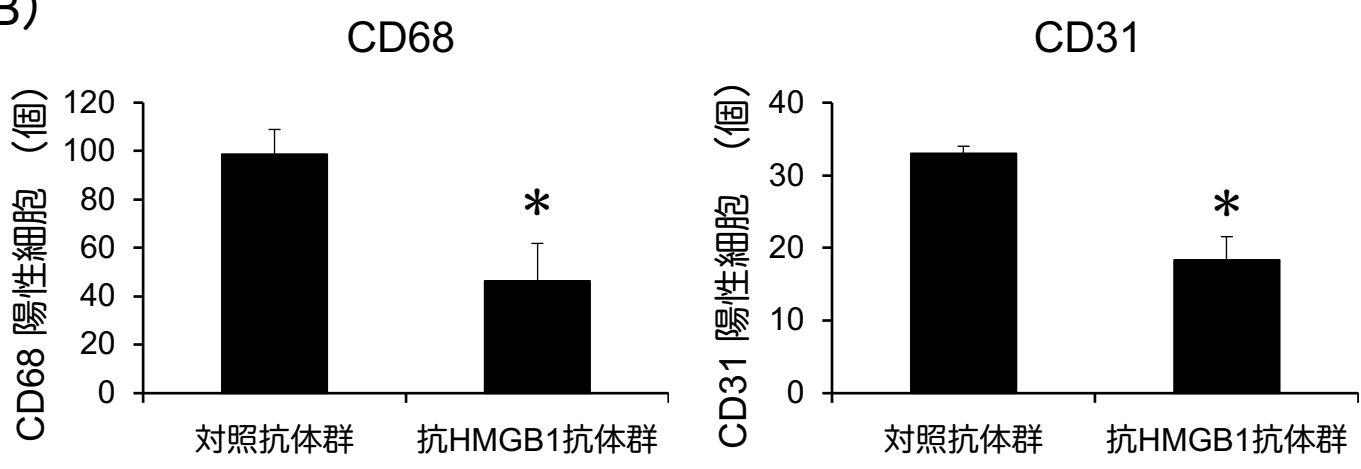
B



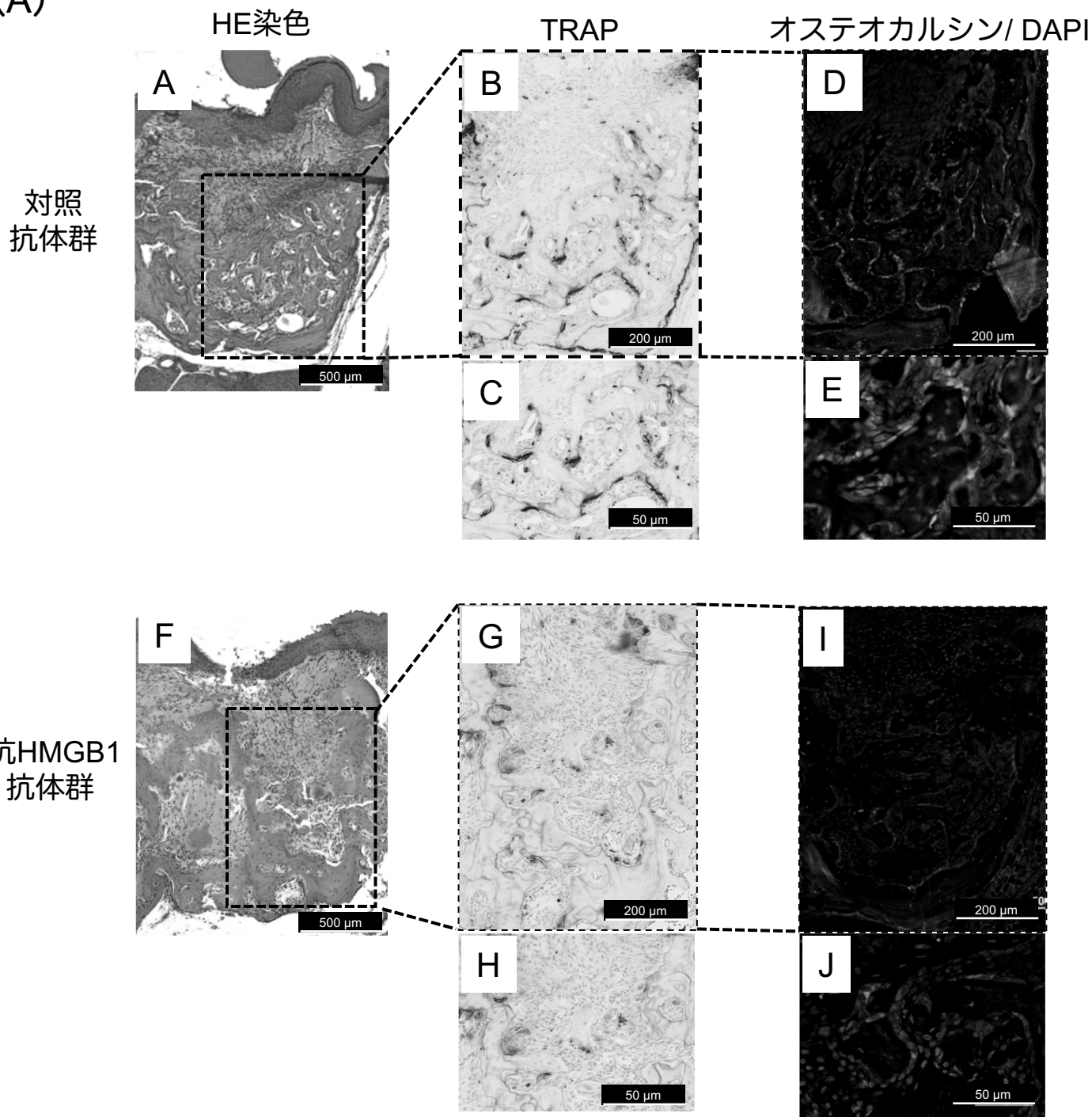
(A)



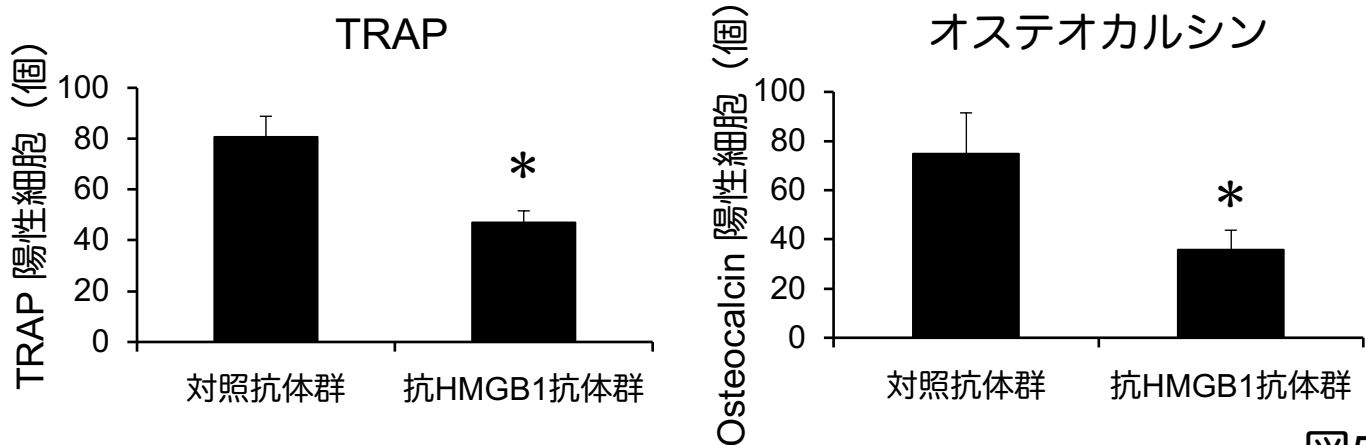
(B)

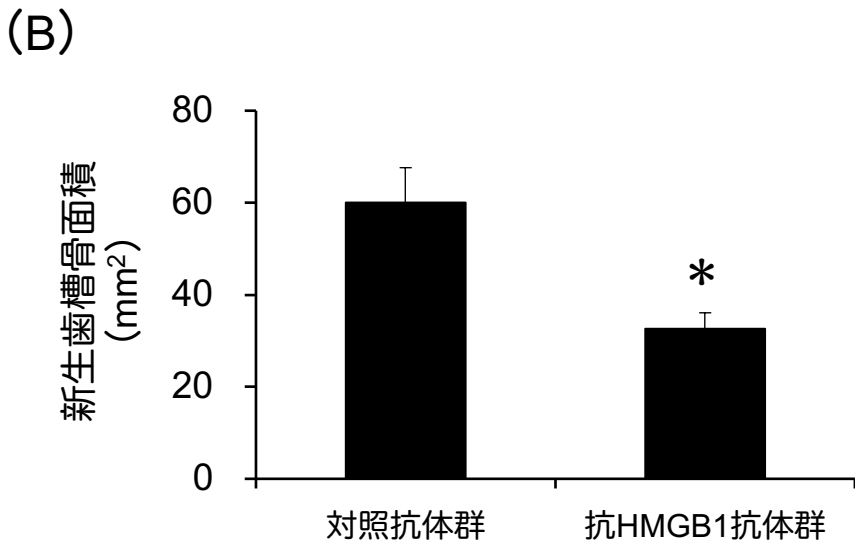
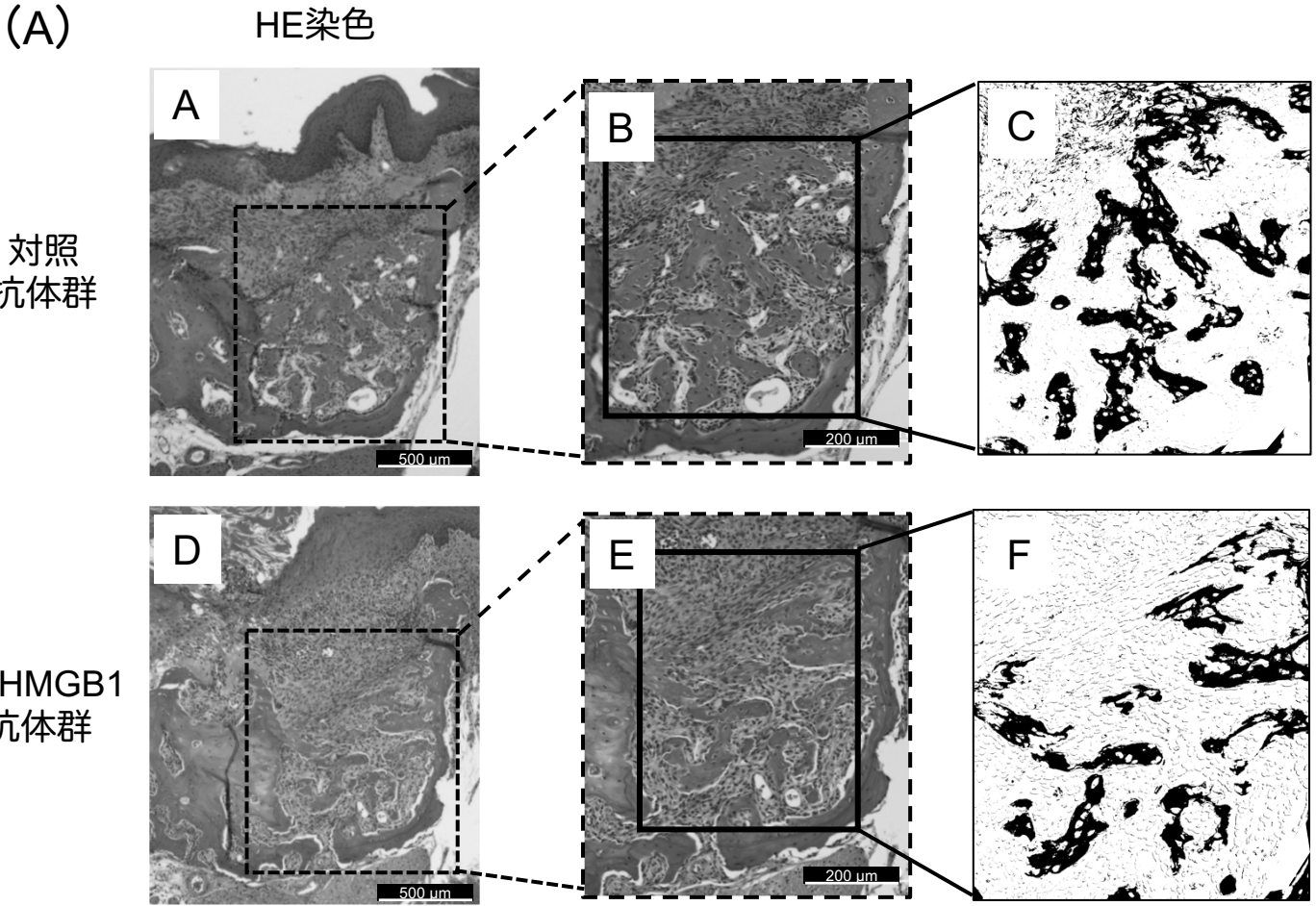


(A)



(B)



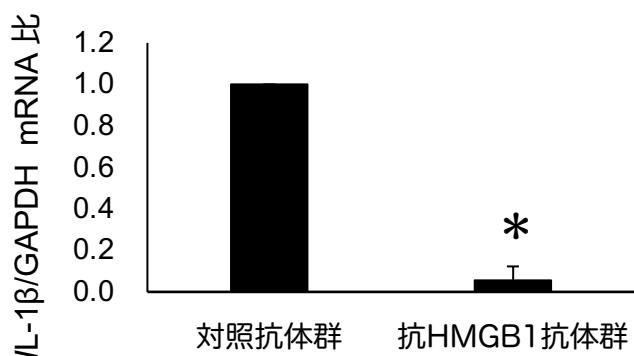


A

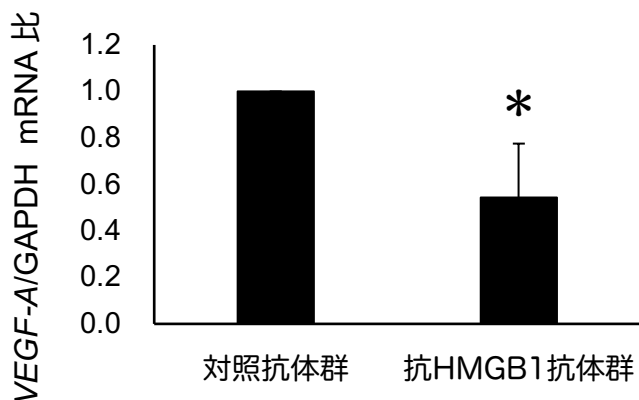
発現遺伝子	遺伝子発現量		遺伝子減少率
	対照抗体群	抗HMGB1抗体群	
<i>IL-1β</i>	154.1	44.8	29%
<i>VEGF-A</i>	32.1	13.6	42%

B

IL-1 β



VEGF-A



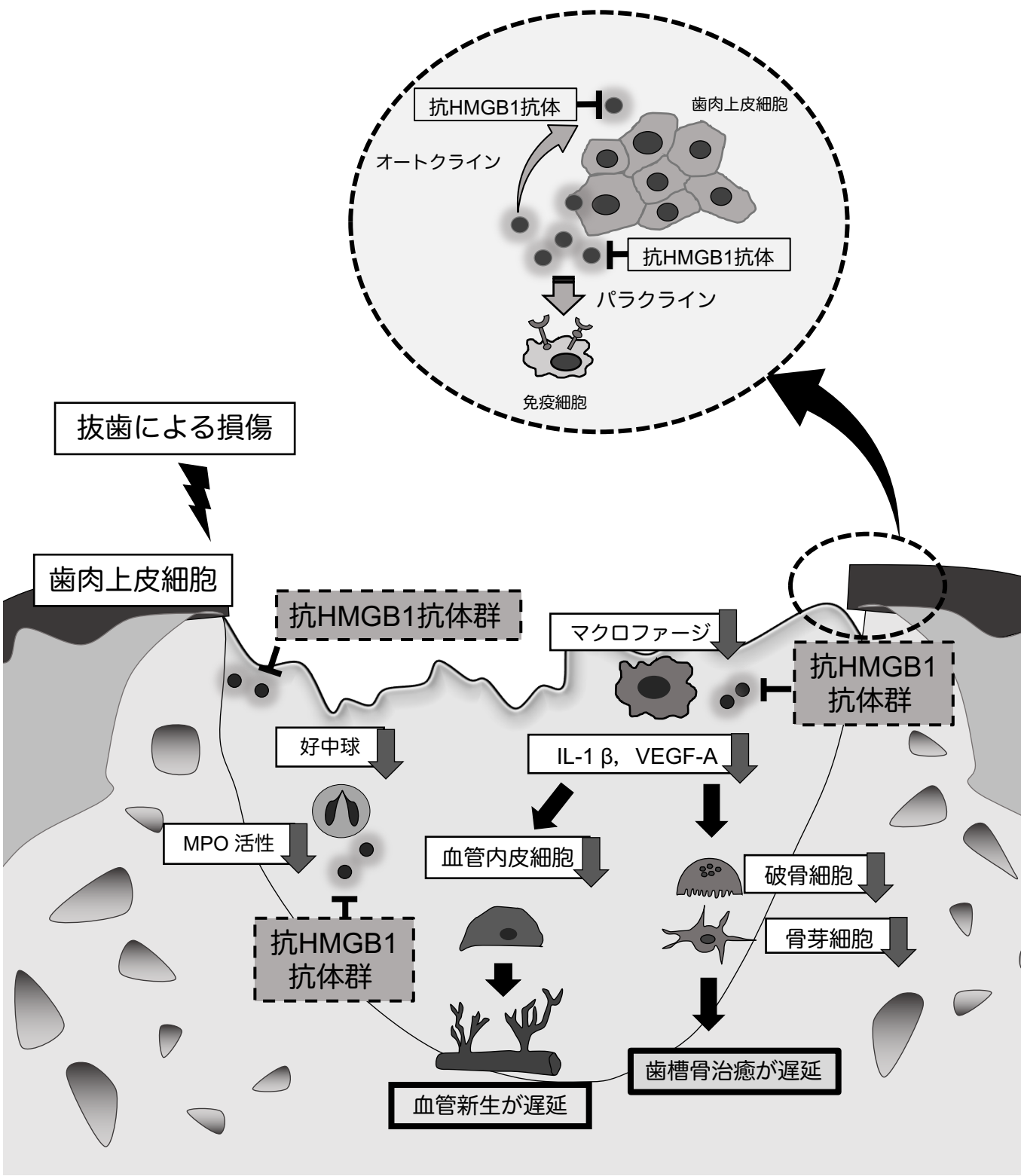


表1. リアルタイムRT-PCR法で用いたプライマー配列と増幅DNA長

標的遺伝子	プライマーの塩基配列	DNA (bp)
IL-1 β	F:5' -GTCGCTCAGGGTCACAAGAA- 3' R:5' -CCACACGTTGACAGCTAGGT- 3'	188
VEGF-A	F:5' -AGGGTCAAAAACGAAAGCGC-3' R:5' -CGCGAGTCTGTGTTTTTGCA- 3'	139
GAPDH	F:5' -GAGTCAACGGATTTGGTCGT- 3' R:5' -GACAAGCTTCCCGTTCTCAG- 3'	185

F, Forward ; R, Reverse