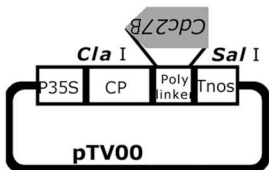


D

| | | | | | | | | | | | |
|-----------|-----|-------------|-------------|-------------|--------------|-------------|-------------|-------------|------------|------------|------------|
| NbCdc27B | 1 | MESILIEICVQ | NSLRHFMRHN | AIFCERLCA | FFPSETNMQL | LACGYLQNOQ | AYAAYHVLKG | TGMAQSRVLF | ALSCFQMGLL | NEAETALCFP | NEPAAEVFNG |
| NtCdc27B1 | 1 | MESILIEICVQ | NSLRHFMRHN | AIFCERLCA | FFPSETNMQL | LACGYLQNOQ | AYAAYHVLKG | TGMAQSRVLF | ALSCFQMGLL | NEAETALCFP | NEPAAEVFNG |
| NtCdc27B2 | 1 | MESILIEICVQ | NSLRHFMRHN | AIFCERLCA | FFPSETNMQL | LACGYLQNOQ | AYAAYHVLKG | TGMAQSRVLF | ALSCFQMGLL | NEAETALCFP | NEPAAEVFNG |
| AtCdc27B | 1 | MEAMLVDCVN | NSLRHFVYKN | AIFMCRERLCA | FFPSEVNLQL | LATS'YLQNOQ | AYSAYHLLKG | TQMAQSRVLF | ALSCFQMDLL | NEASALCPV | NEPQARIENG |
| NbCdc27B | 101 | AAGHYLLGLL | YRYTDRRNS | IQHFNQALLL | DPLLWAAAYE | LCLLGAEEA | AAVPGEASSL | CIQKQHLVYG | TQSQTFRBAT | DQDD-VFARN | IVSDDISPRQ |
| NtCdc27B1 | 101 | AAGHYLLGLL | YRYTDRRNS | IQHFNQALLL | DPLLWAAAYE | LCLLGAEEA | AAVPGEASSL | CIQKQHLVYG | TQSQTFRBAT | DQDNVVFARN | IVSDDISPRQ |
| NtCdc27B2 | 101 | AAGHYLLGLL | YRYTDRRNS | IQHFNQALLL | DPLLWAAAYE | LCLLGAEEA | AAVPGEASSL | CIQKQHLVYG | TQSQTFRBAT | DQDNVVFARN | IVSDDISPRQ |
| AtCdc27B | 101 | AAGHYLLGLL | YKTYDRKNA | AQQFKQSLTI | DPLLWAAAYE | LCLLGAEEA | TAVGFTAAAL | SIQKQVMQQL | STSLGLNTAY | BERNSTSTKN | TSSBDSIPRQ |
| NbCdc27B | 201 | SRHTQCNLNR | EISGNYNGAA | ATQNIQGGST | NMSFYSTFSP | MATQLSGVVP | PPVCRNFQOT | GNTASVAGAD | SSPRSTVNST | IQAPRRKFPD | EGKLRKISGR |
| NtCdc27B1 | 201 | SRHTHNNLNR | EISGNYTGAA | ATQNIQGGST | NMSFYSTFSP | MATQLSGVVP | PPVCRNFQON | GNNASVAGAD | SSPRSTVNST | IQAPRRKFPD | EGKLRKISGR |
| NtCdc27B2 | 201 | SRHTHSNNLR | EISGNYNGAA | ATQNIQGGST | NMSFYSTFSP | MATQLSGVVP | PPVCRNFQON | GNNASVAGAD | SSSRSTVNST | IQAPRRKFPD | EGKLRKISGR |
| AtCdc27B | 201 | SKHTQSHGLK | DISGNFHSHG | V--N-GGVS- | NMSFYNTFSP | VAAQLSGIAP | PLPFRNFQPA | VANPNSLITD | SSPKSTVNST | IQAPRRKFPD | EGKLRKISGR |
| NbCdc27B | 301 | LFSDSVPRNR | SRLSGESTGN | TNSNVSTASG | NGTNNITSKY | GSSKLSMRTL | RSMTSRKAQS | WATEAYGEGV | RYDISDDSLR | NMTSSYPGSD | ARPLEQEGPT |
| NtCdc27B1 | 301 | LFSDSVPRNR | SRLSGESTGN | TNSNVSAASG | NGTNNITSKY | GSSKLSMRTL | RSMTSRKAQS | WATEAYGEGV | RYDISDDSLR | NMTSSYPGSD | ARPLEQEGPT |
| NtCdc27B2 | 301 | LFSDSVPRNR | SRLSGESTGN | TNSNVSAASG | NGTNNITSKY | GSSKLSMRTL | RSMTSRKAQS | WATEAYGEGV | RYDISDDSLR | NMTSSYPGSD | ARPLEQEGPT |
| AtCdc27B | 301 | LFSDSGPRRS | SRLSADSGAN | INSEVATVSG | NV--NNAASKYL | GSSKLSLAL | RSVTLRKQHS | WANENMDRGGV | RGEFDDSRP | NTASTTGSMA | SND--QDET |
| NbCdc27B | 401 | TSAGVNVSS | TSILSGAABI | LALFRILGEG | YRLSCLYRCQ | DALDYVKNLP | HKHYQKJWVL | SQIGRAYFEM | VDYVEADNAP | GLARLASPYS | LEGMDMYSTV |
| NtCdc27B1 | 401 | TSAGVNVSS | TSILSGAABI | LALFRILGEG | YRLSCLYRCQ | DALDYVKNLP | HKHYQKJWVL | SQIGRAYFEM | VDYVEADNAP | GLARLASPYS | LEGMDMYSTV |
| NtCdc27B2 | 401 | TSAGVNVSS | TSILSGAABI | LALFRILGEG | YRLSCLYRCQ | DALDYVKNLP | HKHYQKJWVL | SQIGRAYFEM | VDYVEADNAP | GLARLASPYS | LEGMDMYSTV |
| AtCdc27B | 401 | MSIGGIAMSS | QTTITIGVSEI | LNLLRLTLEG | CRLSVMYRCQ | EALDYVMKPL | HKHYNTJWVL | SQVQKAYFEL | IDYLEAEKAF | RLARLASPYC | LEGMDIYSTV |
| NbCdc27B | 501 | LYHLKEDMKL | SYLAQELVST | DRLASQSWCA | MGNCSYLGQD | HETALKNFQR | AVQLNPRFAY | GHTLCOGHEYT | ALBDFENGIK | SYQNALRVDA | RHYNAMYGLG |
| NtCdc27B1 | 501 | LYHLKEDMKL | SYLAQELVST | DRLASQSWCA | MGNCSYLGQD | HETALKNFQR | AVQLNPRFAY | GHTLCOGHEYT | ALBDFENGIK | SYQNALRVDA | RHYNAMYGLG |
| NtCdc27B2 | 501 | LYHLKEDMKL | SYLAQELVST | DRLASQSWCA | MGNCSYLGQD | HETALKNFQR | AVQLNPRFAY | GHTLCOGHEYT | ALBDFENGIK | SYQNALRVDA | RHYNAMYGLG |
| AtCdc27B | 501 | LYHLKEDMKL | SYLAQELIST | DRLAPQSWCA | MGNCSYLGQD | HETALKNFQR | AVQLNPRFAY | AHTLCOGHEYT | TLEDFENGMK | SYQNALRVDT | RHYNAMYGLG |
| NbCdc27B | 601 | MIYLRQEKFE | FSEHHFRMAL | RINPHSSVIM | SYLGTALHAL | KKNEBEALVM | ELAIADKKN | PLPMYQKANI | LVSMESFNAA | LGVLBELKEH | APRESSVVAL |
| NtCdc27B1 | 601 | MIYLRQEKFE | FSEHHFRMAL | RINPHSSVIM | SYLGTALHAL | KKNEBEALVM | ELAIADKKN | PLPMYQKANI | LVSMESFNAA | LGVLBELKEH | APRESSVVAL |
| NtCdc27B2 | 601 | MIYLRQEKFE | FSEHHFRMAL | RINPHSSVIM | SYLGTALHAL | KKNEBEALVM | ELAIADKKN | PLPMYQKANI | LVSMESFNAA | LGVLBELKEH | APRESSVVAL |
| AtCdc27B | 601 | MIYLRQEKLE | FSEHHFRMAF | LINPSSSVIM | SYLGTLSHAL | KRSBEALEIM | EQAIIVADKKN | PLPMYQKANI | LVCLERLEDA | LVGLBELKEY | APSESSVVAL |
| NbCdc27B | 701 | MGRYIKRRNM | YDKAMLHFQV | ALDLKPSATD | VATIKAAIEK | LHVDPMEDE | L* | | | | |
| NtCdc27B1 | 701 | MGRYIKRRNM | YDKAMLHFQV | ALDLKPSATD | VATIKAAIQVH | WNSGPNSSLG | RLC* | | | | |
| NtCdc27B2 | 701 | MGRYIKRRNM | YDKAMLHFQV | ALDLKPSATD | VATIKAAIEK | LHVDPMEDE | L* | | | | |
| AtCdc27B | 701 | MGRYIKRRNM | YDKAMLHFQV | ALDLKPPATD | VATIKAAIEK | LHVDPDEIDS | P* | | | | |

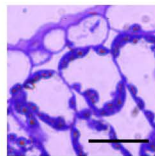
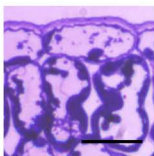
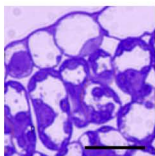
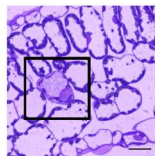
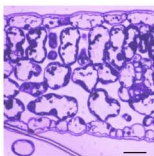
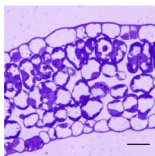
Kudo et al., Figure 1

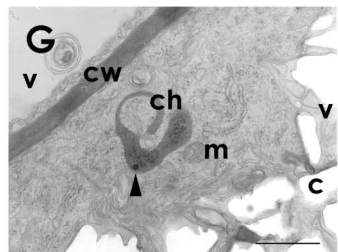
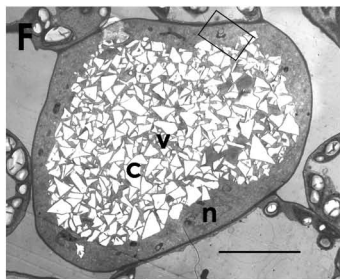
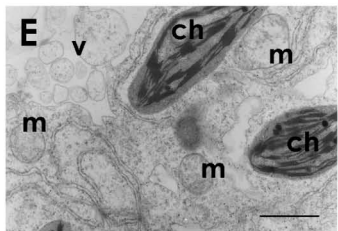
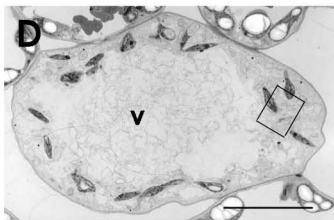
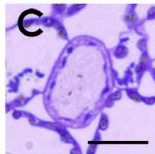
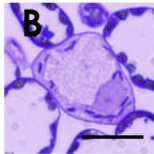
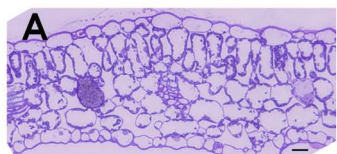
A**B**

Cont.
(Buffer)

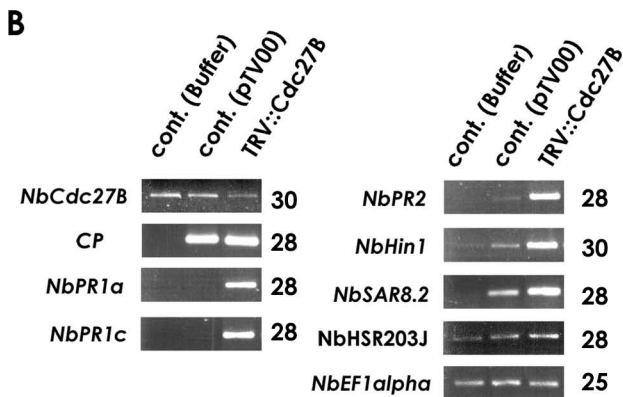
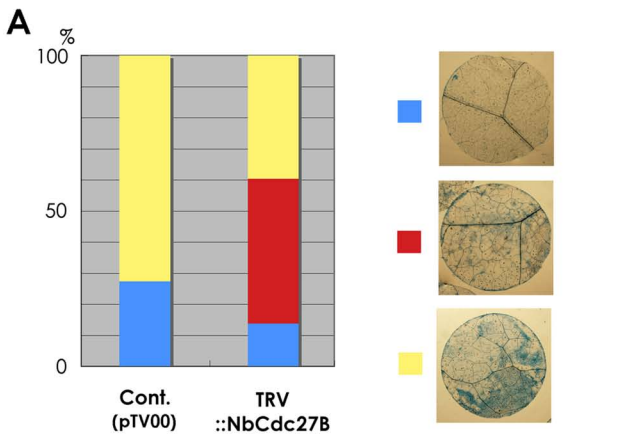
Cont.
(pTV00)

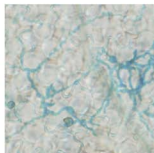
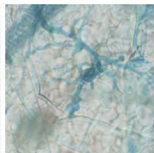
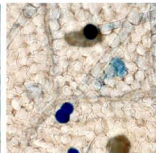
TRV
::NbCdc27B

**C**



Kudo et al., Figure 3



C**Cont.**
(Buffer)**Cont.**
(pTV00)**TRV**
::NbCdc27B**D****Cont.**
(Buffer)**Cont.**
(pTV00)**TRV**
::NbCdc27B**Kudo et al., Figure 4**